



Cornell University  
ILR School

Cornell University ILR School  
**DigitalCommons@ILR**

---

Federal Publications

Key Workplace Documents

---

11-2009

# BLS Spotlight on Statistics: Thanksgiving

Bureau of Labor Statistics

Follow this and additional works at: [http://digitalcommons.ilr.cornell.edu/key\\_workplace](http://digitalcommons.ilr.cornell.edu/key_workplace)

**Thank you for downloading an article from DigitalCommons@ILR.**

**Support this valuable resource today!**

---

This Article is brought to you for free and open access by the Key Workplace Documents at DigitalCommons@ILR. It has been accepted for inclusion in Federal Publications by an authorized administrator of DigitalCommons@ILR. For more information, please contact [hlmdigital@cornell.edu](mailto:hlmdigital@cornell.edu).

---

## BLS Spotlight on Statistics: Thanksgiving

### **Abstract**

[Excerpt] What activities do you have planned for this Thanksgiving? Perhaps cooking and enjoying a meal with family or friends, playing sports or watching sports on television, doing volunteer work, or shopping? Here's a look at some BLS data behind those Thanksgiving scenes.

### **Comments**

#### **Suggested Citation**

U.S. Department of Labor, Bureau of Labor Statistics. (2009). *BLS spotlight on statistics: Thanksgiving*. Washington, D.C.: Author.

# Thanksgiving

November 2009

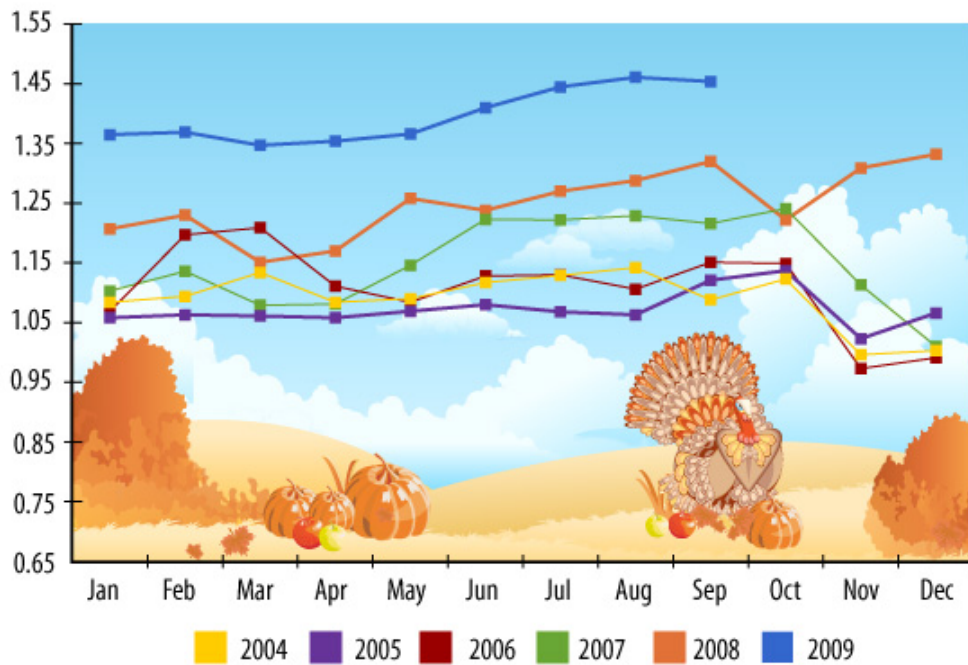
What activities do you have planned for this Thanksgiving? Perhaps cooking and enjoying a meal with family or friends, playing sports or watching sports on television, doing volunteer work, or shopping? Here's a look at some BLS data behind those Thanksgiving scenes.

## Bringing Home the Turkey

On many American tables the focal point of the Thanksgiving dinner is a roast turkey. In recent years, turkey — which stores often promote as a sale item for Thanksgiving and the holiday season — has usually been less expensive during November and December than in other months. However, with the exception of September, the average price of whole, frozen turkey was higher during November and December than in most other months in 2008.

### Turkey for Dinner

Average price per pound of whole, frozen turkey in U.S. cities, 2004-2009



Source: U.S. Bureau of Labor Statistics

www.bls.gov

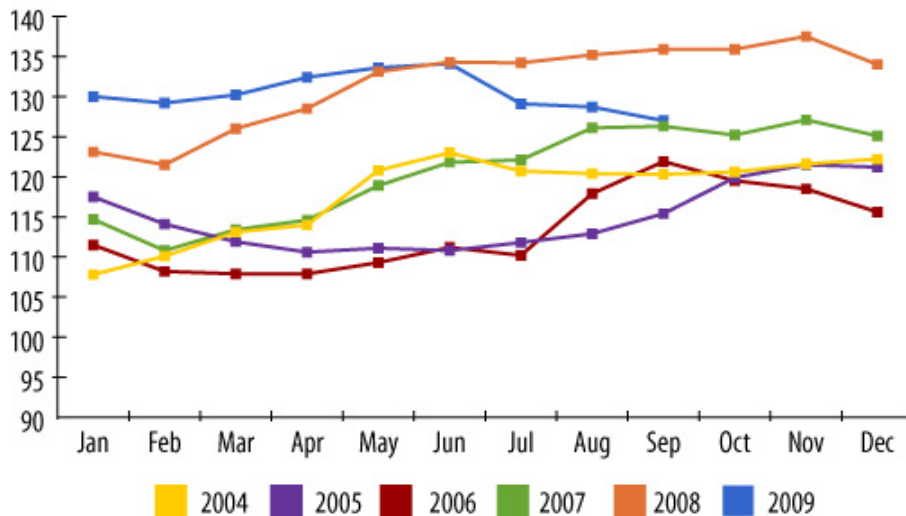
Source: Consumer Price Indexes

## Turkey Prices – The Producer Price Perspective

While the average price per pound of whole, frozen turkey paid by Consumers was higher in all months of 2009 than in 2008, the producer price index for turkeys (including frozen, whole or parts) in 2009 has remained lower than the 2008 producer price index since June 2009.

### Producer Pricing for Turkey

PPI Turkeys (including frozen, whole or parts), 2004-2009



Source: U.S. Bureau of Labor Statistics

www.bls.gov

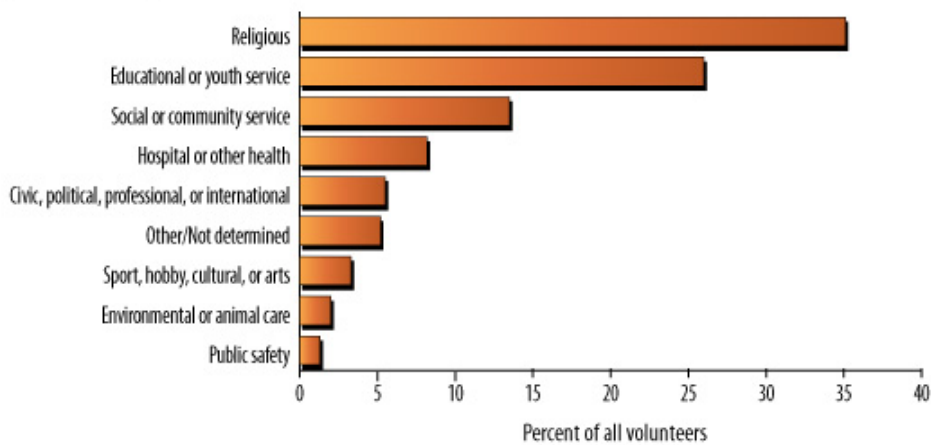
Source: *Producer Price Index*

## Volunteers

Some Americans volunteer on holidays such as Thanksgiving. Americans who did volunteer work at any time in 2008 were most likely to be affiliated with a religious or educational or youth service organization.

### Americans Volunteer

Percent distribution of volunteers by type of main organization for which volunteer activities were performed, September 2007-September 2008



Source: U.S. Bureau of Labor Statistics

www.bls.gov

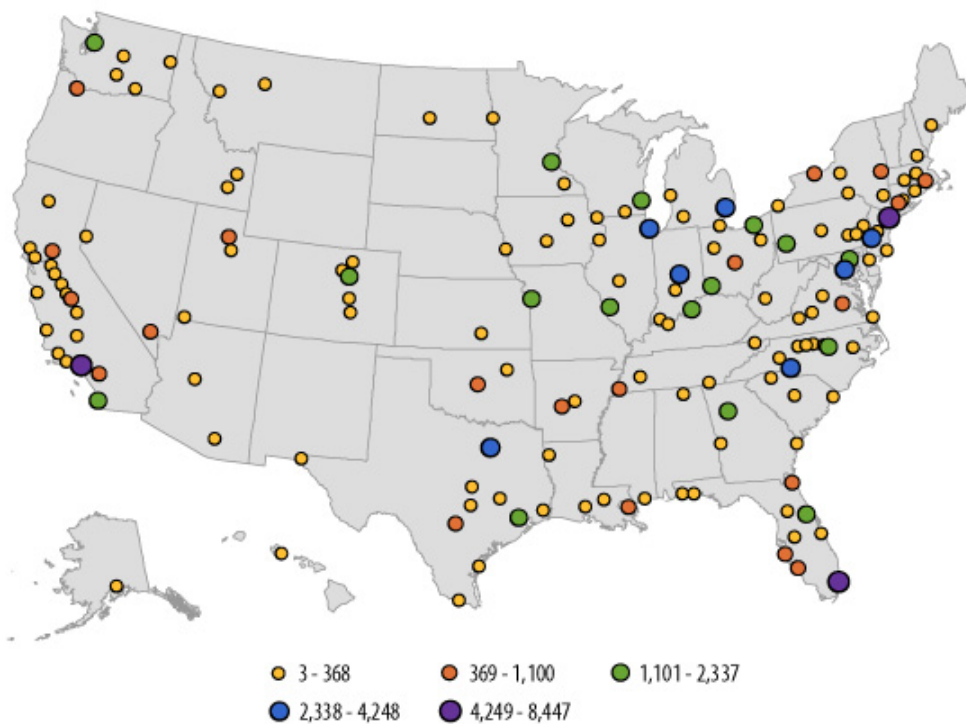
*Source: Current Population Survey*

## Thanksgiving Means Football

For many, Thanksgiving is about watching sports on television. Considering the millions of people who watch spectator sports, it's interesting to note how few employees — athletes, coaches, referees, as well as management and support office personnel — work in the spectator sports industry. Nationwide, the spectator sports industry averaged 135,532 jobs in 2008; compared to 135,416 jobs in 2007 and representing about one-tenth of one percent of total private industry employment. The nation's largest metropolitan areas generally have the most employees in spectator sports.

### Spectator Sports Employment

Spectator sports employment by metropolitan area, 2008 annual averages



Source: U.S. Bureau of Labor Statistics

www.bls.gov

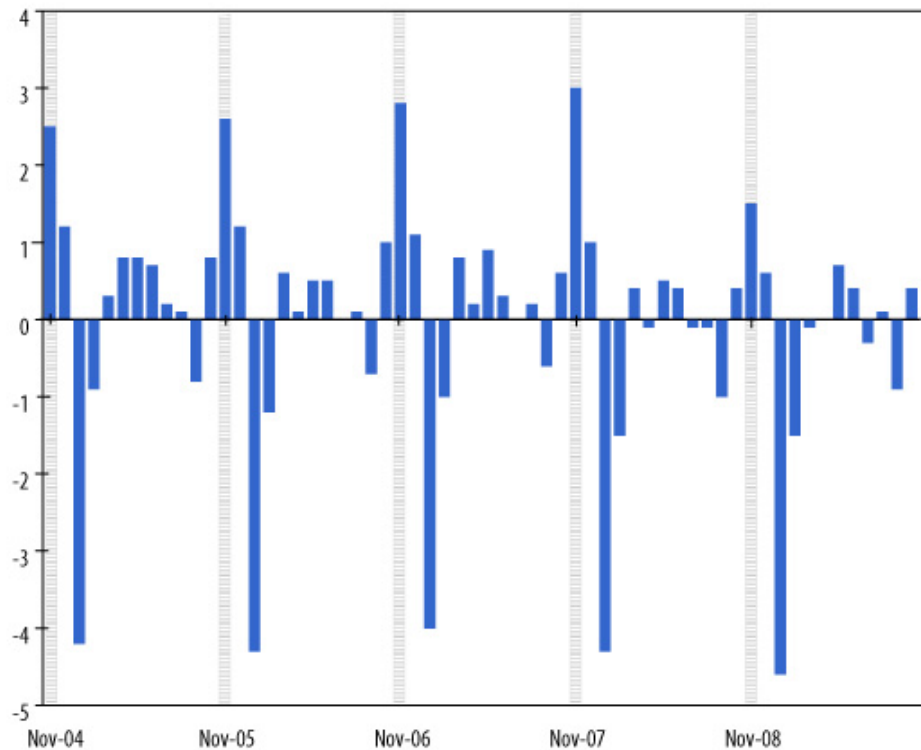
Source: Quarterly Census of Employment and Wages

## Holiday Shopping Season

The day after Thanksgiving is the traditional start of the holiday shopping season and has been hailed as one of the busiest shopping days of the year. While many Americans shop, others work in temporary jobs during the holiday season. In a pattern that is seen year after year, the retail trade industry hires additional seasonal employees beginning in November.

### Retail Trade

1 month percent change, 2004-2009, not seasonally adjusted



Source: U.S. Bureau of Labor Statistics

www.bls.gov

Source: *Current Employment Statistics*

## More Info

### **General Information**

For more information, please call (202) 691-5200.

### **Media Contact**

The news media can contact the BLS Press Officer at (202) 691-5902.

*Note: Data in text, charts and tables are the latest available at the time of publication.*