



Cornell University  
ILR School

Cornell University ILR School  
**DigitalCommons@ILR**

---

Buffalo Commons

Centers, Institutes, Programs

---

11-26-2012

## Health Data for Buffalo and Erie County

Partnership for the Public Good

Follow this and additional works at: <https://digitalcommons.ilr.cornell.edu/buffalocommons>

Thank you for downloading an article from DigitalCommons@ILR.

**Support this valuable resource today!**

---

This Article is brought to you for free and open access by the Centers, Institutes, Programs at DigitalCommons@ILR. It has been accepted for inclusion in Buffalo Commons by an authorized administrator of DigitalCommons@ILR. For more information, please contact [catherwood-dig@cornell.edu](mailto:catherwood-dig@cornell.edu).

If you have a disability and are having trouble accessing information on this website or need materials in an alternate format, contact [web-accessibility@cornell.edu](mailto:web-accessibility@cornell.edu) for assistance.

---

## Health Data for Buffalo and Erie County

### Abstract

Health data for Buffalo and Erie County redacted from the Erie County Community Health Assessment from 2010-2013.

### Keywords

Buffalo, Health, General, Data/Demographics/History, Demographics and Data, Fact Sheet, PPG, PDF



**Health Data for Buffalo and Erie County  
Redacted from the Erie County Community Health Assessment, 2010-2013  
By the Erie County Public Health Department**

**General**

**Health, Fitness, and Nutrition Statistics for Erie County, 2008**

	<b>Erie County</b>	<b>NYS</b>
Overweight or Obese	64.8%	58.2%
No physical activity during free time	17.4%	22.7%
5+ servings for fruits/vegetables per day	24.2%	26.7%

**Access to Care in Erie County, 2008**

	<b>Erie County</b>	<b>NYS</b>
Adults without health insurance	4.9%	13.7%
Adults with a regular health care provider	87.9%	82.8%
Adults who visited a doctor for a routine check-up in past year	76.3%	75.4%
Adults who visited dentist in past year	63.8%	70.5%
ER visits classified as non-emergent, emergent/primary care treatable, or avoidable	87.7%	--
Dentists that accept Medicaid	41%	--

**Prenatal Care and Infant Mortality, 2008**

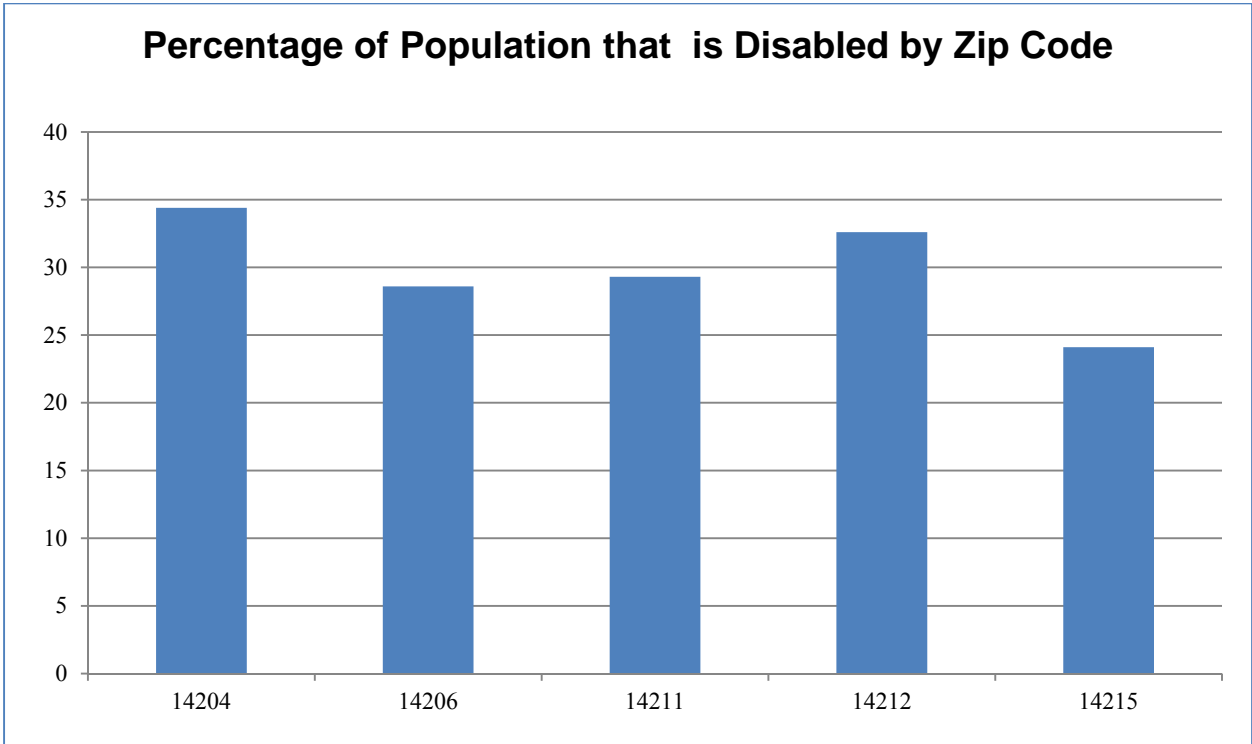
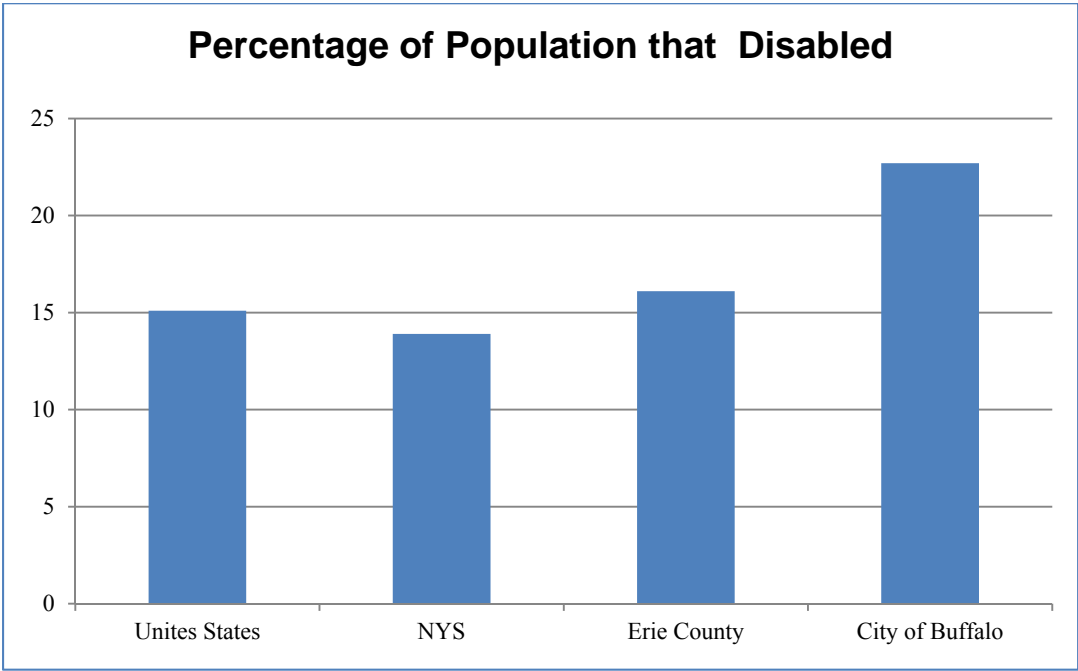
	<b>Erie County Rate</b>	<b>NYS Rate</b>
First Trimester Prenatal Care (per 1,000 live births)	72.4	72.4
Low Birthweight (less than 2500 grams)	7.8	8.1
Infant Mortality (per 1,000 live births)	7.8	5.5
Newborn Drug-Related Discharge (per 10,000 newborn discharges)	134	58.1

### Disease Morbidity in Erie County, 2007

	<b># Cases Reported</b>	<b>Rate (per 100,000)</b>
AIDS cases	85	9.3
Early Syphilis	17	1.9
Chlamydia Incidence	4349	476.2
TB Incidence	9	1.0
E. Coli O157 Incidence	70.8	6.7
Meningococcal Incidence	6	0.7
Pertussis Incidence	11	1.2
Lyme Disease Incidence	7	0.8

### Disease Mortality Erie County, 2007

<b>Mortality (per 100,000)</b>	<b>NYS Rate</b>	<b>Erie County Rate</b>
Total Deaths	757.9	1040
Lung Cancer (Total)	48.3	70.8
Lung Cancer (Male)	52.2	74.8
Lung Cancer (Female)	27.3	44.1
Breast Cancer (Female)	27.3	44.1
Cervical Cancer	3	1.9
Cerebrovascular Disease	30.5	55
Heart Diseases	256	275.8
Homicides	4.3	6.5
Suicides	7.1	8.3
Unintentional Injury	25.5	24.2
Motor Vehicle	7.3	6.7
Non-Motor Vehicle	18.2	17.5
AIDS	6.9	3.1
Cirrhosis (Liver)	6.7	11.1

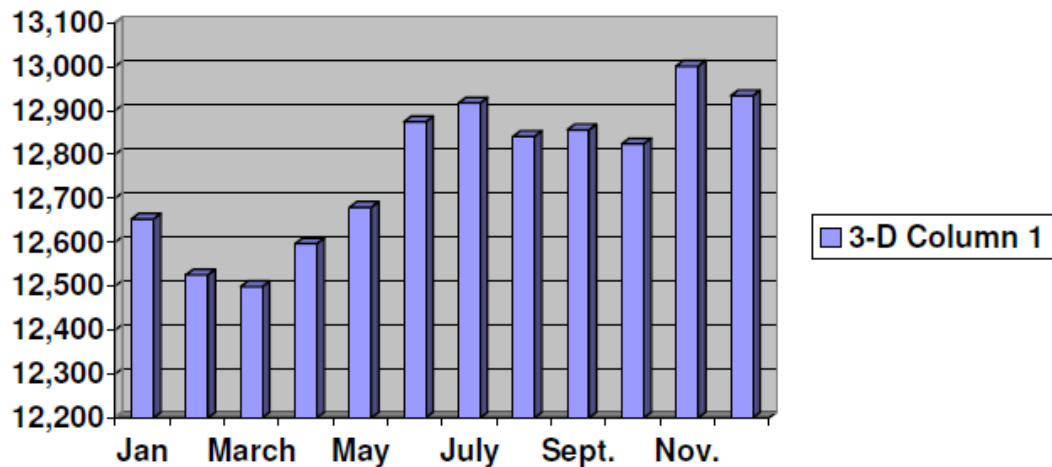


## Insurance

### Births Paid for by Medicaid/Self-Pay, 1996-2006

	1996	1997	1998	1999	2000	2001	2002	2003	2004	2005	2006
Erie County	27.8	28.2	27.1	23.8	19.2	14.1	15.7	15.2	22.5	19.9	21.6
Upstate NYS	27.9	27.9	27.5	27.3	27.1	27.6	28	28.7	29.8	32.1	33.3

### Children Enrolled in Medicaid CHP-A or Private Plan CHP-B in Erie County, 2008



### Adults Enrolled in Family Health Plus and Adult Medicaid, 2008

Month	Type Insurance	New York State	Erie County
January	Medicaid	349,838	14,694
	Family Health Plus	543,687	15,029
February	Medicaid	352,255	14,846
	Family Health Plus	542,125	15,121
March	Medicaid	354,688	15,011
	Family Health Plus	542,974	15,196
April	Medicaid	357,979	15,290
	Family Health Plus	547,379	15,171
May	Medicaid	359,987	15,467
	Family Health Plus	547,744	15,159
June	Medicaid	361,695	15,692
	Family Health Plus	548,838	14,851

## Dental

### Dental Health Statistics for 3<sup>rd</sup> Graders in Erie County, 2002-2004

	Erie County	NYS
With dental decay/cavities (all)	58.9%	16.5%
With dental decay/cavities (lower-income)	73.8%	59.6%
With untreated decay/cavities (all)	27.1%	33.1%
With untreated decay/cavities (lower-income)	35.2%	40.8%
One or more dental visits in past year (all)	17.4%	22.7%
One or more dental visits in past year (lower-income)	55.4%	60.9%

## Tobacco Use

### Tobacco Use Statistics for Western New York Students, 2008

	Middle School		High School	
	Buffalo Area Estimate	NYS Estimate	Buffalo Area Estimate	NYS Estimate
<b>Total</b>	5.0%	3.5	15.7	14.7
<b>Race</b>				
White	2.8	2.9	15.8	17.7
Black	13.6	3.9	9.2	6.8
Hispanic	12.5	4.6	28.2	13.2
Other	7.0	4.3	14.8	14.6
<b>Gender</b>				
Female	5.4	3.5	14.4	14.4
Male	3.7	3.3	16.7	14.9
<b>Age</b>				
9-14	3.7	3.0	6.7	8.9
15-17	39.5	25.7	16.4	14.3
18+	--	--	18.4	23.6
<b>Grade</b>				
6 <sup>th</sup>	1.7	1.7	--	--
7 <sup>th</sup>	3.8	2.5	--	--
8 <sup>th</sup>	9.2	6.1	--	--
9 <sup>th</sup>	--	--	11.2	10.8
10 <sup>th</sup>	--	--	15.0	12.6
11 <sup>th</sup>	--	--	15.4	14.9
12 <sup>th</sup>	--	--	20.2	21.3

*\*Buffalo Area includes all eight counties of Western New York*

## Tobacco Use Statistics for Adults in Erie County, 2008

	Percent of Everyday Smoking among Adults		Percent of Adults Living in Homes in which Smoking is Prohibited	
	Erie County	NYS	Erie County	NYS
<b>Total</b>	17.1	11.5	70.0	81.1
<b>Gender</b>				
Male	16.0	11.6	64.5	80.9
Female	18.0	11.5	75.0	81.3
<b>Age</b>				
18-34	--	12.9	--	81.9
35-44	17.7	11.7	79.9	89.8
45-54	20.7	15.1	69.9	77.9
55-64	18.6	9.0	73.5	79.3
65 and older	2.8	7.6	75.5	74.5
<b>Education</b>				
<High School	24.3	16.5	58.6	78.2
Some College	21.3	14.3	71.7	79.3
>College Degree	6.6	5.4	81.6	85.0
<b>Income</b>				
<\$24,999	16.3	13.4	--	75.8
\$25,000-\$49,999	--	15.8	--	79.2
\$50,000-\$74,999	15.0	14.0	70.6	79.4
>\$75,000	8.9	6.7	--	85.2

Source: Expanded BRFSS Interim Report: July-December 2008 Erie County

## Lead Poisoning

### Lead Poisoning Statistics for Erie County, 2005-2007

	Year of Test	Number of Children Rate $\geq 10-14$ dcg/dL	Number of Children $\geq 15-19$ dcg/dL	Number of Children $\geq 20$ dcg/dL	Incidence Rate $\geq 10$ dcg/dL (per 1,000)
NYS	2005	1,497	460	326	11.8
	2006	1,328	448	306	10.3
	2007	1,216	394	275	9.2
	2005-2007 average	1,347	434	313	10.4
Erie County	2005	250	72	61	25.1
	2006	249	70	52	22.7
	2007	243	62	48	20.8
	2005-2007 average	247	68	54	22.8



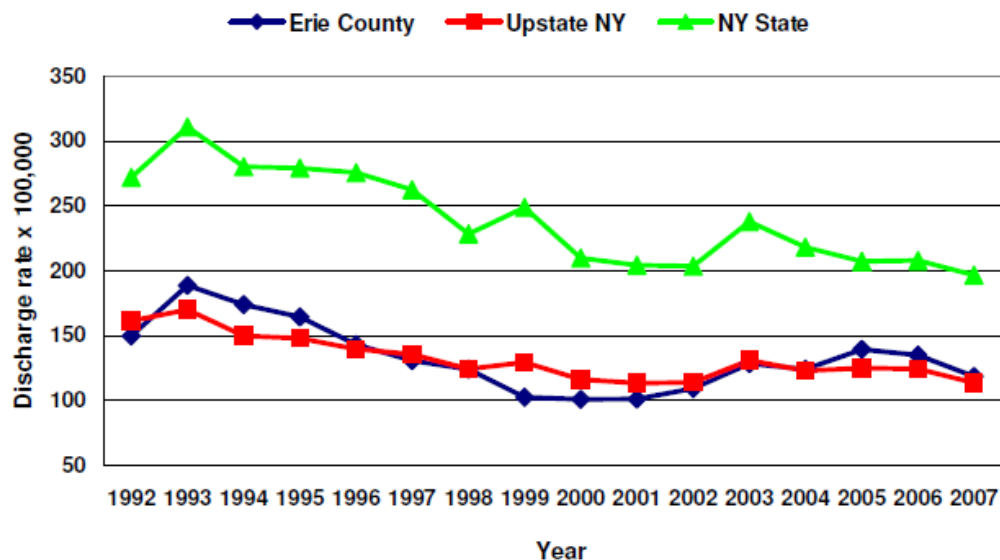
### Blood Lead Level (BLL) Elevations for the 6 Highest Zip Codes in Erie County, 2006

Zip Code	BLL < 10 µg/dl	BLL 10-19 µg/dl	BLL 20+ µg/dl	Total Elevations	Total Tested
14207	847	45	4	49	896
14208	334	45	8	53	387
14211	961	165	28	193	1154
14212	410	70	13	83	493
14213	1042	141	47	188	1230
14215	1446	93	25	118	1564

µg/dl = micrograms per deciliter

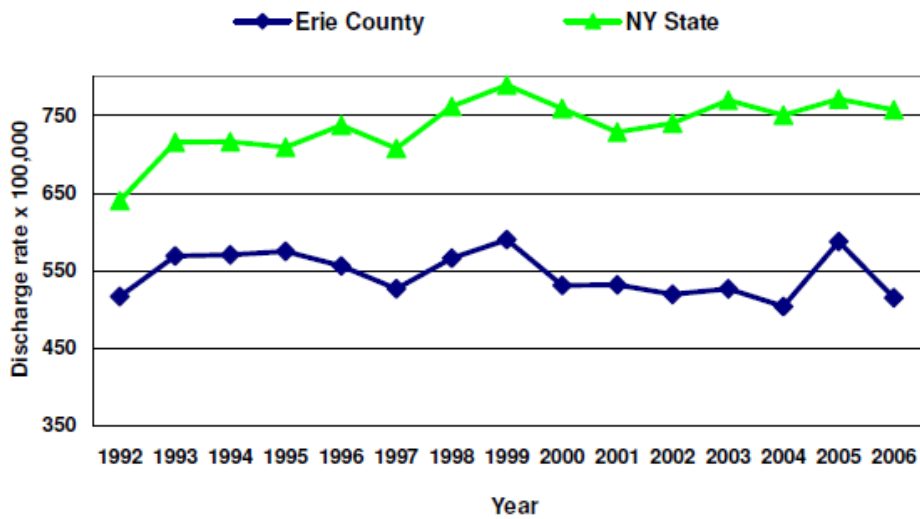
### Asthma and COPD

#### Asthma Discharge Rate in Erie County, 1992-2007

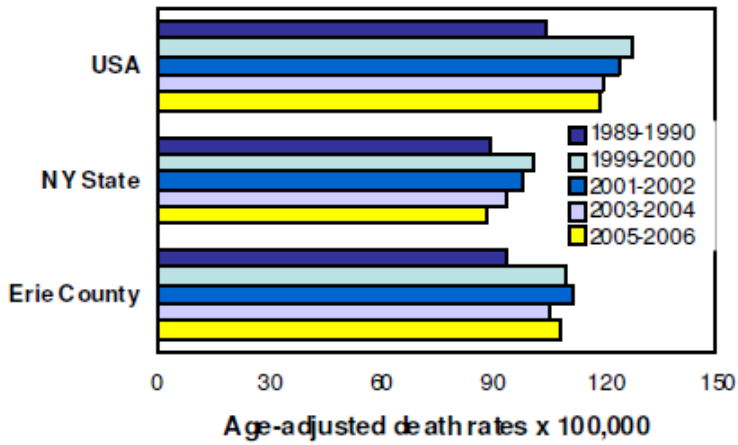


**Chronic obstructive pulmonary disease (COPD)** is a lung disease in which the lung is damaged, making it hard to breathe. In COPD, the airways (the tubes that carry air in and out of the lungs) are partly obstructed, making it difficult to inhale and exhale. Cigarette smoking is the most common cause of COPD. Breathing in other kinds of lung irritants, like pollution, dust, or chemicals over a long period of time may also cause or contribute to COPD.

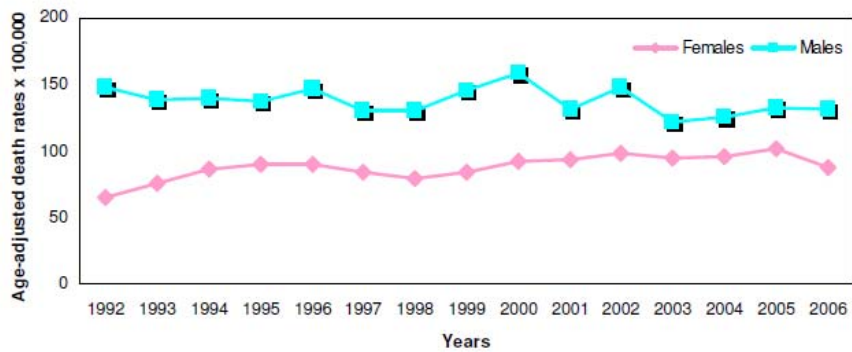
### COPD Discharge Rates in Erie County (for adults 45 and over)



### COPD Death Rate in Erie County, 1989-1990 through 2005-2006

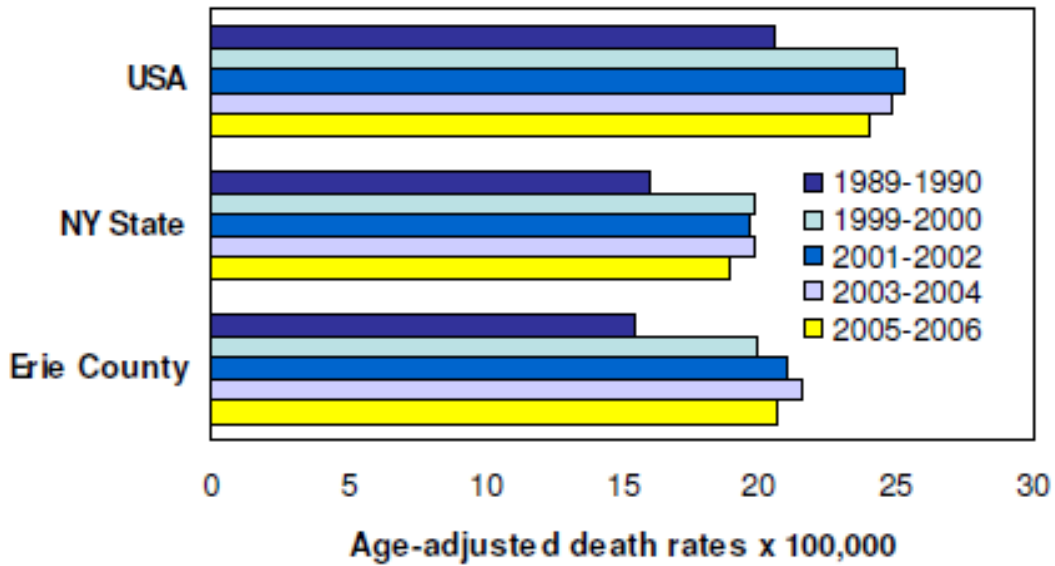


### COPD Death Rate in Erie County by Race and Gender, 1992-2006

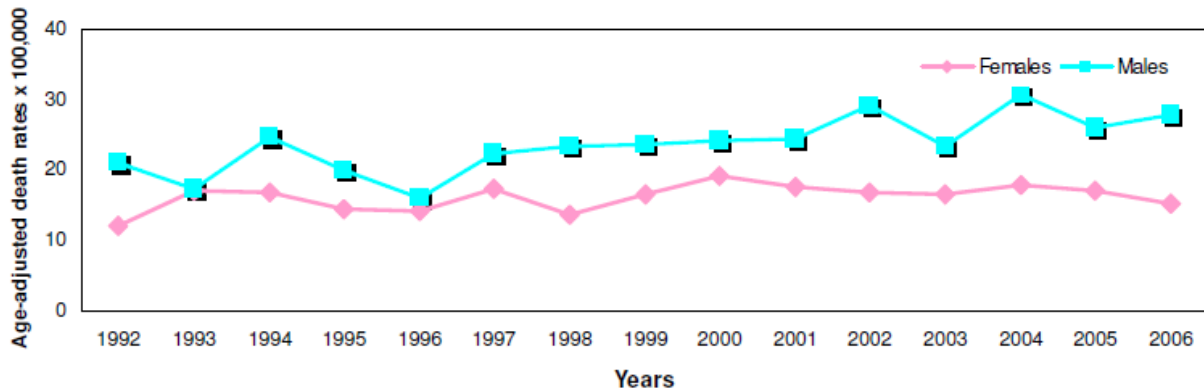


## Diabetes

### Diabetes Death Rates for Erie County, 1989-1990 through 2005-2006

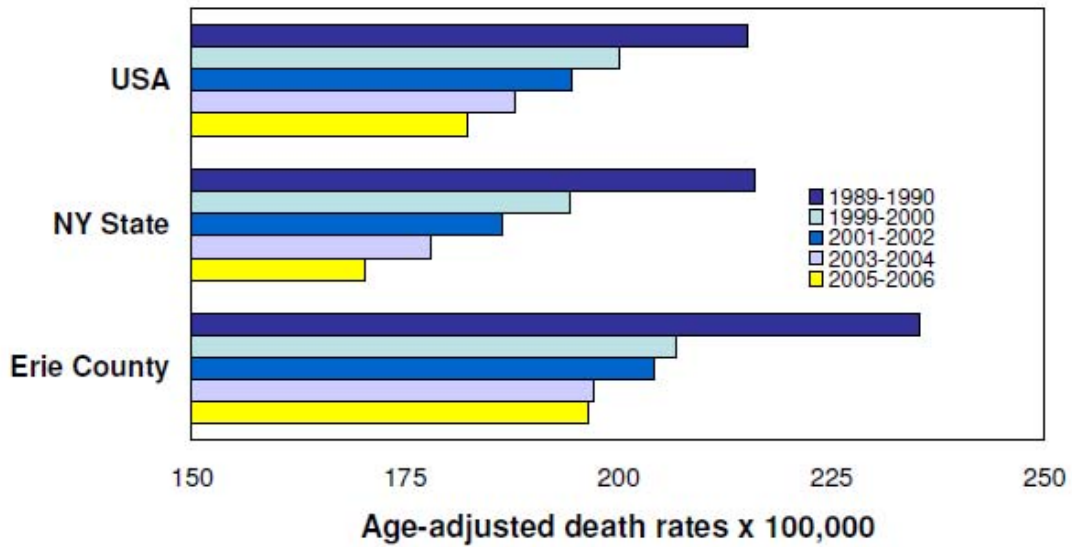


### Diabetes Death Rates by Sex, 1992-2006

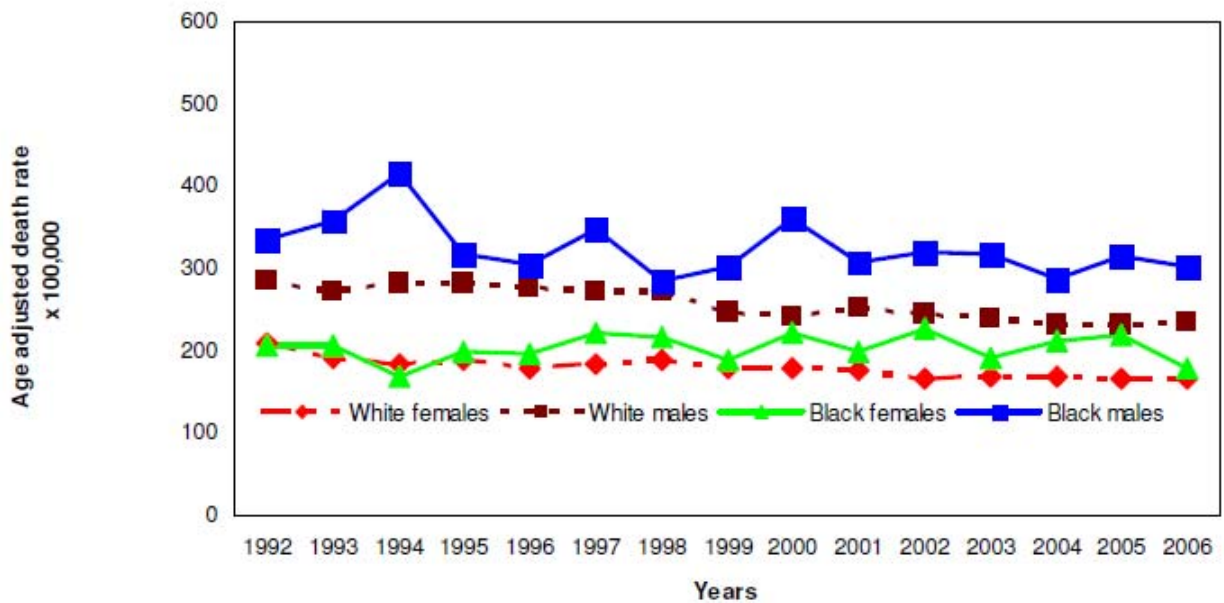


## Cancer

**Overall Cancer Death Rates for Erie County, 1989-1990 through 2005-2006**



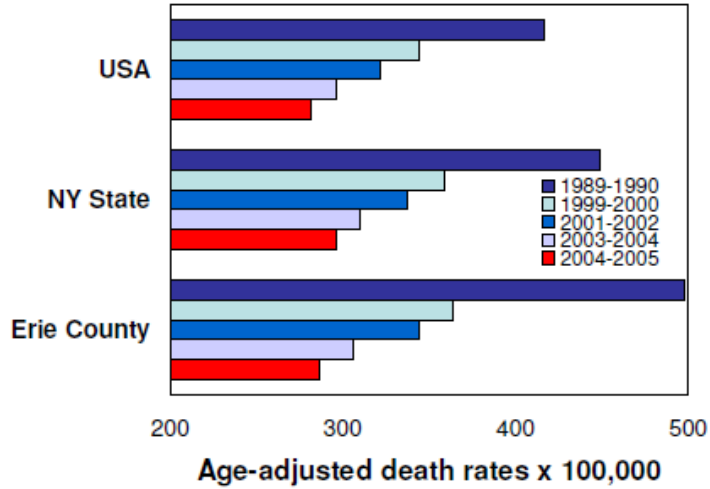
**Overall Cancer Death Rates in Erie County by Race and Gender, 1992-2006**



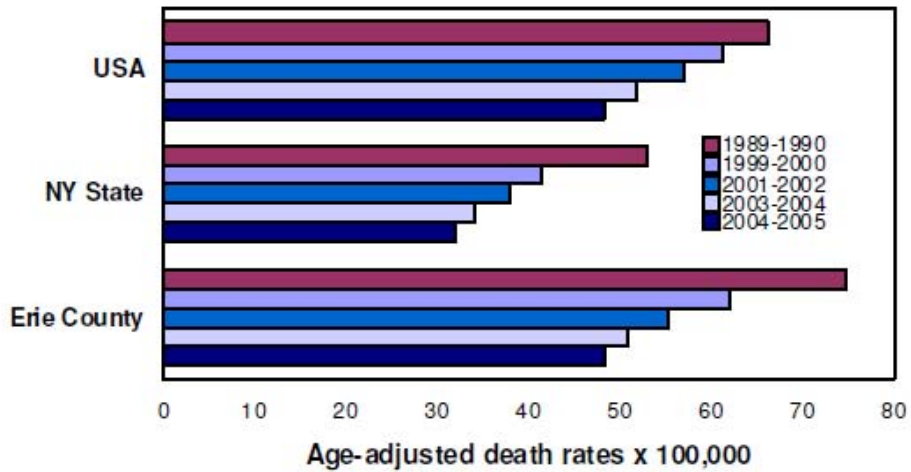
- **Lung cancer** is the most common cause of cancer death in both males and females in the United States. Lung cancer rates for males are consistently higher than for females. Males in Erie County have the highest incidence rates compared to the US and NY State. Within Erie County Black males have the highest incidence rates, followed by White males, White females and Black females. The gap between males and females is much larger for Blacks than for Whites.
- **Prostate cancer** is the most commonly diagnosed form of cancer in males and the second leading cause of cancer deaths in males in the United States. Incidence rates for black males are consistently higher than for whites regardless of region. The rate in Erie County for blacks was almost double the rate for whites between 2002-2006. Death rates for prostate cancer in Erie County are lower than the United States and NY State.
- **Breast cancer** is the most commonly diagnosed cancer among women in the United States. Erie County has shown improvement since the 1989-1990 time period when the rate was significantly higher than the rates for NY State and the country. Since that time period rates have been comparable in all three regions. Breast cancer incidence rates for white females are consistently higher regardless of region than for black females.
- **Colorectal Cancer** is the second most common cause of cancer-related death in the United States. There has been a steady decline in the death rate for both males and females for the period from 1992-2002 in Erie County. Colorectal cancer incidence rates for males are consistently higher than for females and highest for black males nationally. The pattern of the disease in Upstate NY and NY State as a whole are somewhat different as white males have a slightly higher incidence than black males in NYS as a whole but in both upstate NY and Erie County it is reversed and follows national patterns. Rates among black females are higher than white females in Erie County.
- The **cervical cancer** death rate of Erie County is lower than the rate nationally and in NY State from 1989-2006. The death rate from cervical cancer in Erie County for the period 1992-2002 remained relatively consistent of < 2 per 100,000 population. Cervical cancer incidence rates for white females are consistently lower, regardless of region, than for black females. Rates in Erie County are lower than national and New York State comparison regions.
- **Oral cancer** incidence rates for males are consistently higher, regardless of region, than that of females with black males having the highest rate except in Erie County where they are slightly surpassed by white males. There was a slight decline in the death rate from oral cancer in Erie County for the period 1992-2002, coinciding with a steady decline in the incidence rate of oral cancer in all regions since the 1976-80 periods.

## Cardiovascular Disease

### Cardiovascular Disease Death Rate for Erie County, 1989-1990 through 2005-2006



### Stroke Death Rates for Erie County, 1989-1990 through 2004-2005

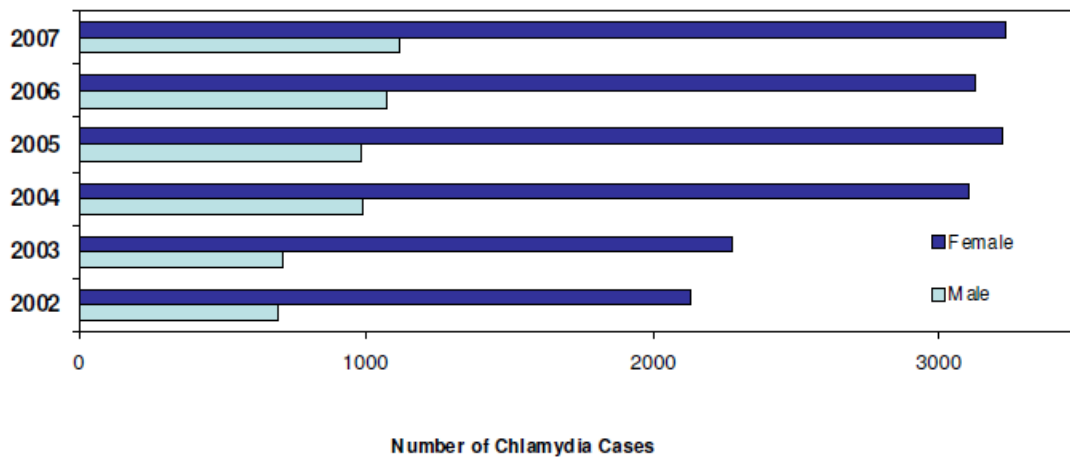


## Sexually Transmitted Disease (STD)

### Sexually Transmitted Disease (STD) Incidence Rates for Erie County, 2009

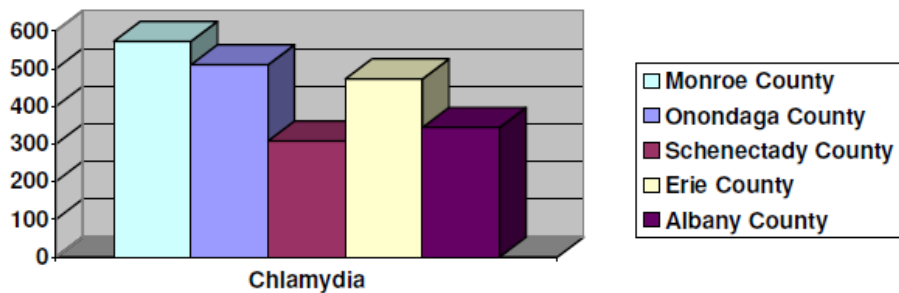
	# Cases Reported	Rate (per 100,000)
Chlamydia	4979	547.2
Gonorrhea	1406	154.5
Syphilis (all stages)	28	3.1

### Reported Chlamydia Cases in Erie County by Sex, 2002-2007

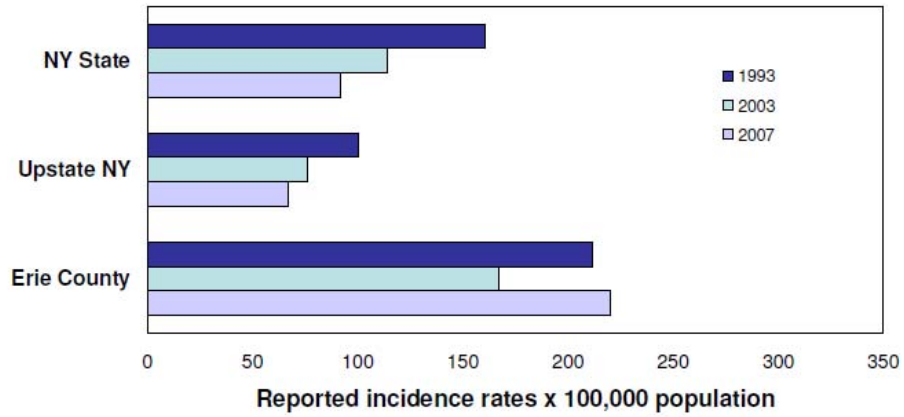


### Chlamydia Incidence Rate for Upstate NY, 2007

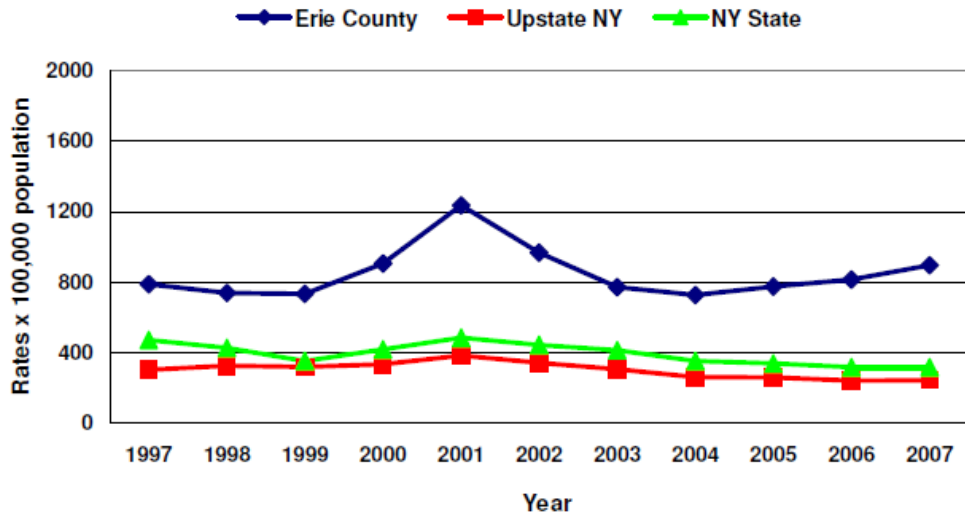
#### 2007 Chlamydia Incidence Rate X 100,000 of Population



### Gonorrhea Incidence Rates for Erie County (all ages)

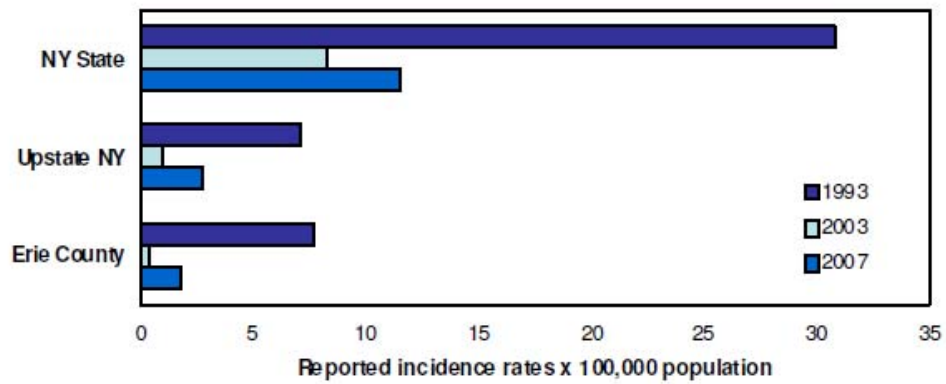


### Gonorrhea Incidence Rates for Erie County (ages 15-19), 1997-2007

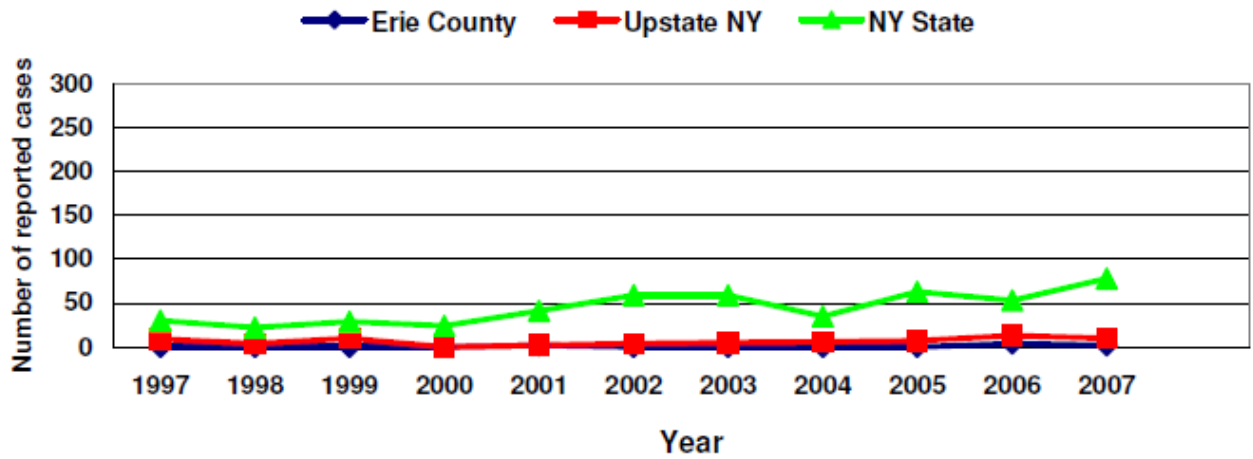




### Early Syphilis Incidence Rates for Erie County (all ages)



### Reported Early Syphilis Cases Among in Erie County (ages 15-19), 1997-2007

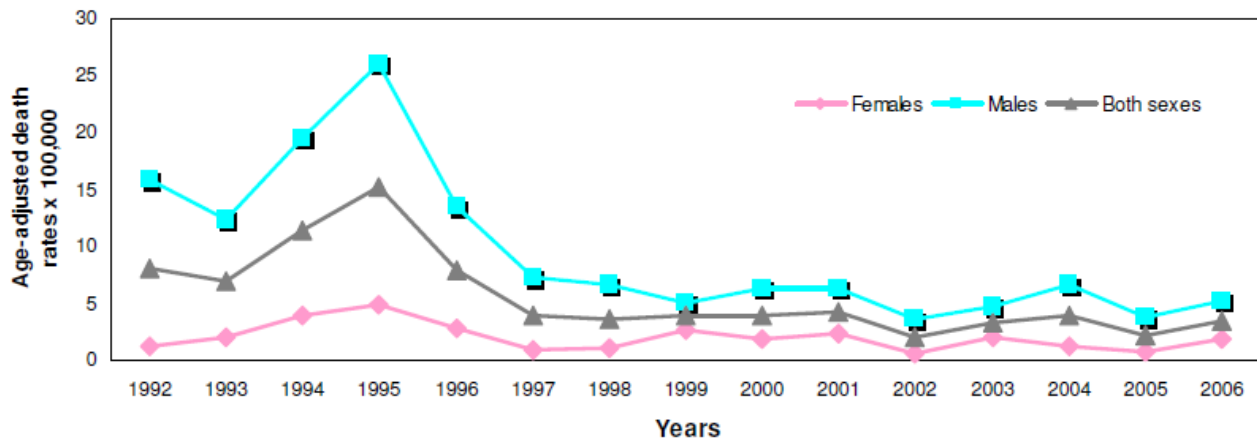


## Acquired Immune Deficiency Syndrome (AIDS)

### AIDS Cases in Erie County, 2003-2007

Region/County	2003	2004	2005	2006	2007	Rate
Erie County	76	66	69	59	85	7.9
Upstate NYS	881	831	892	856	806	7.7
NYS	5,451	4,692	4,566	4,298	4,038	23.9

### AIDS Death Rates in Erie County, 1992-2006




---

Partnership for the Public Good  
[www.ppgbuffalo.org](http://www.ppgbuffalo.org)  
 237 Main St., Suite 1200, Buffalo NY 14203

---