



Cornell University
ILR School

Cornell University ILR School
DigitalCommons@ILR

Federal Publications

Key Workplace Documents

11-4-2011

Changing American Households

U.S. Census Bureau

Follow this and additional works at: http://digitalcommons.ilr.cornell.edu/key_workplace

This Article is brought to you for free and open access by the Key Workplace Documents at DigitalCommons@ILR. It has been accepted for inclusion in Federal Publications by an authorized administrator of DigitalCommons@ILR. For more information, please contact hlmdigital@cornell.edu.

Changing American Households

Abstract

Census Bureau Director Robert Groves appeared on C-SPAN's "Washington Journal" on Friday, Nov. 4, and discussed Changing American Households. These slides and charts illustrate the changes discussed by Groves.

Keywords

households, income, poverty, family, census

Comments**Suggested Citation**

U.S. Census Bureau. (2011). *Changing American households*. Washington, DC: Author.

Changing American Households

C-SPAN
Nov. 4, 2011

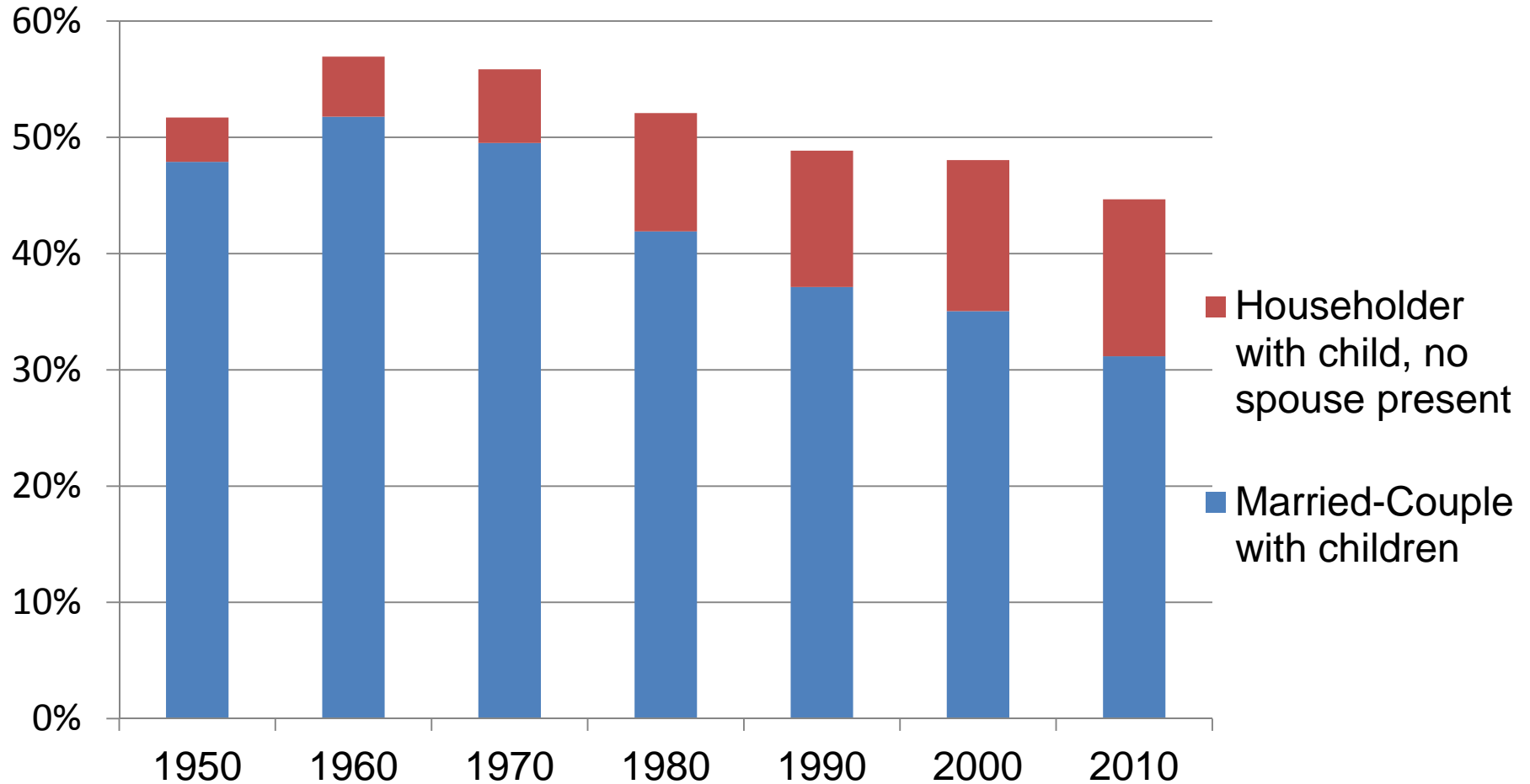
Definitions

- **Household** - all the people living in a housing unit.
- **Householder** - a person age 15 and over whose name is on the lease or mortgage.
- **Single-person household** - a household that contains only one person.
- **Family** - a household that contains at least one additional person who is related to the householder by birth, marriage or adoption.

How American Households are Changing

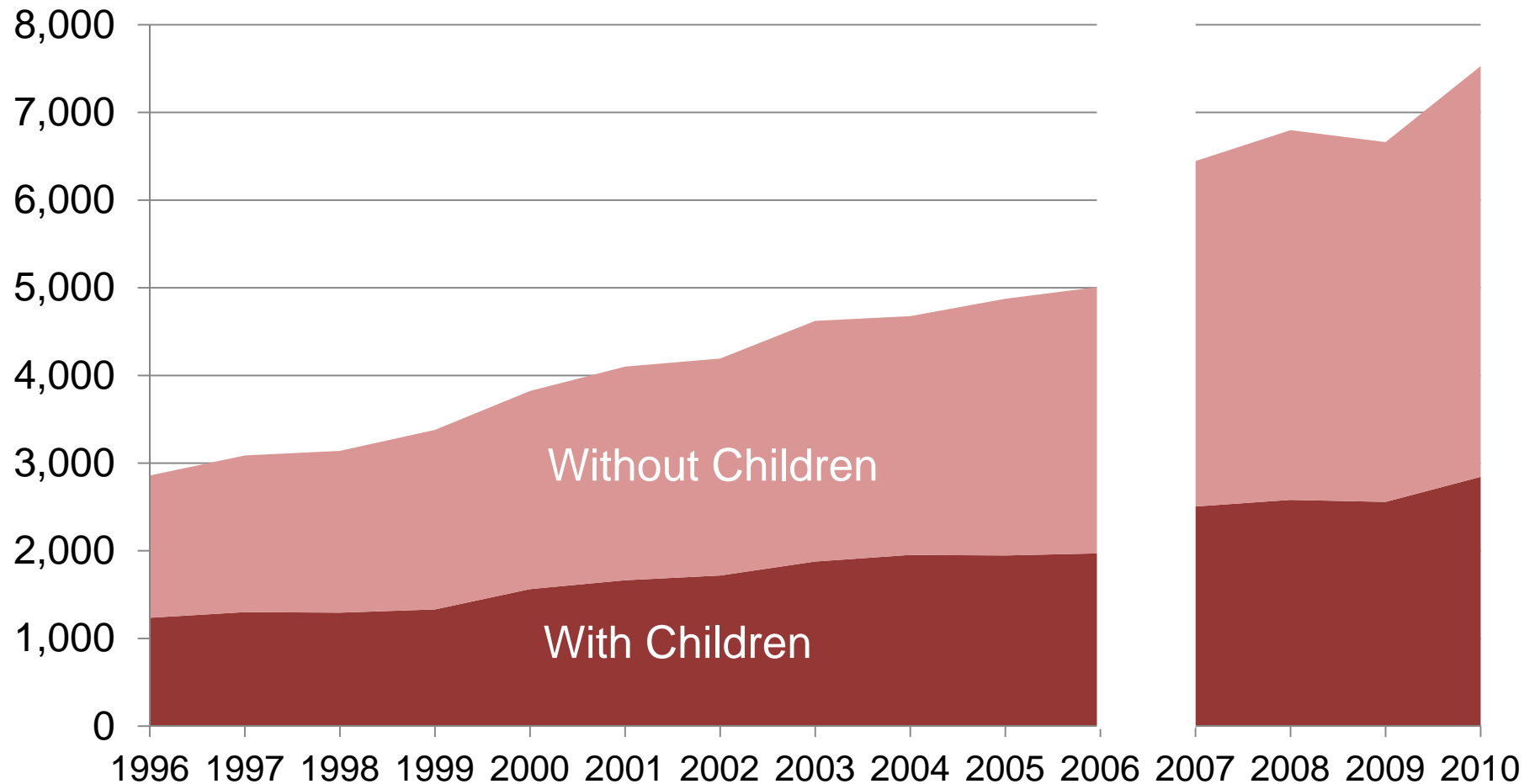
- Marital Patterns have driven changes in American Households.
- Since 2007, there has been an increase in the number of households with an additional adult living in them.
- There has been an increase in the percentage of multi-earner households in the past 10 years.

Percentage of Families with Children by Family Type: 1950-2010



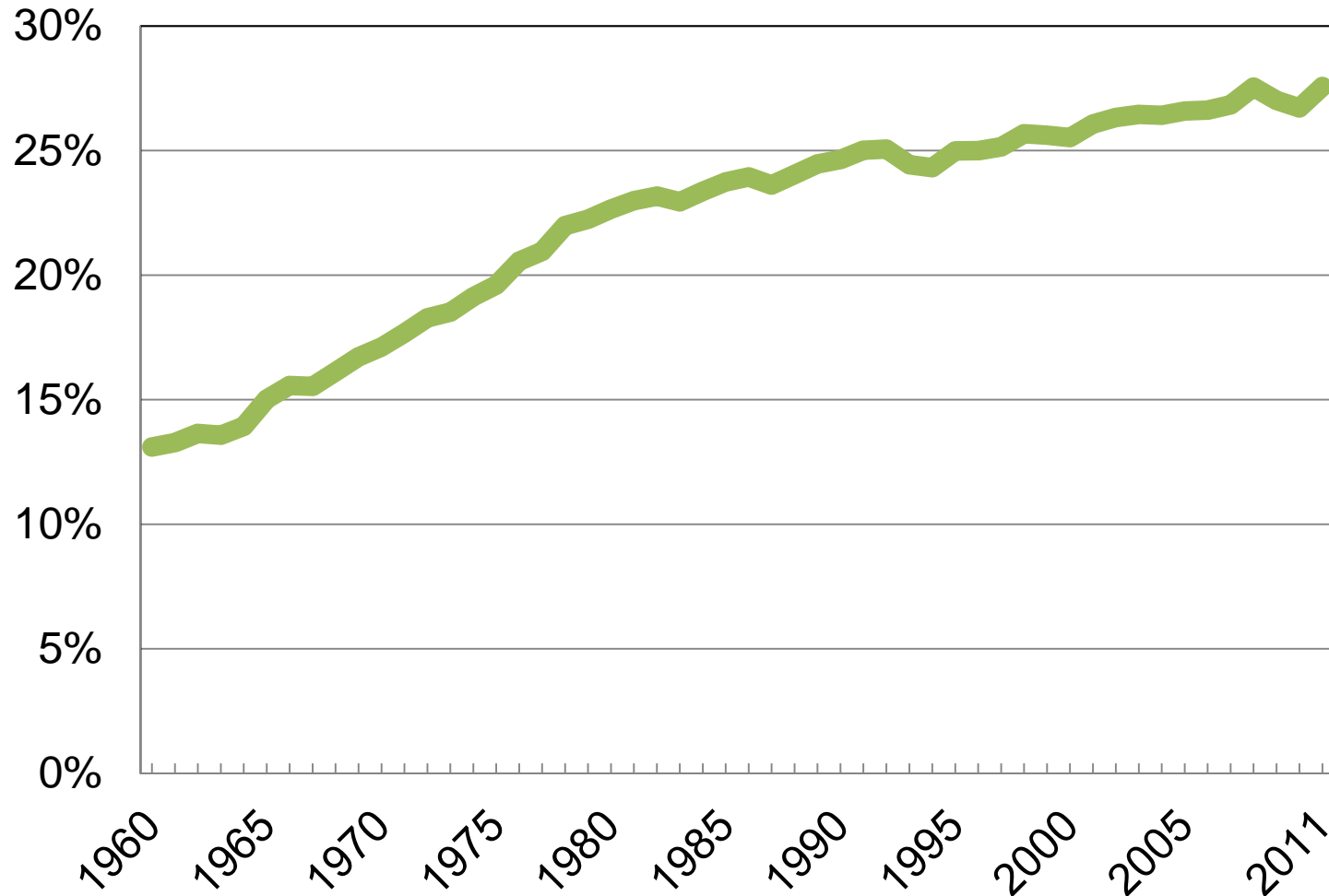
Source: U.S. Census Bureau, Current Population Survey, Annual Social and Economic Supplements, 1950, 1960, 1970, 1980, 1990, 2000, 2010

Unmarried Couples in Thousands by Presence of Children: 1996 to 2010



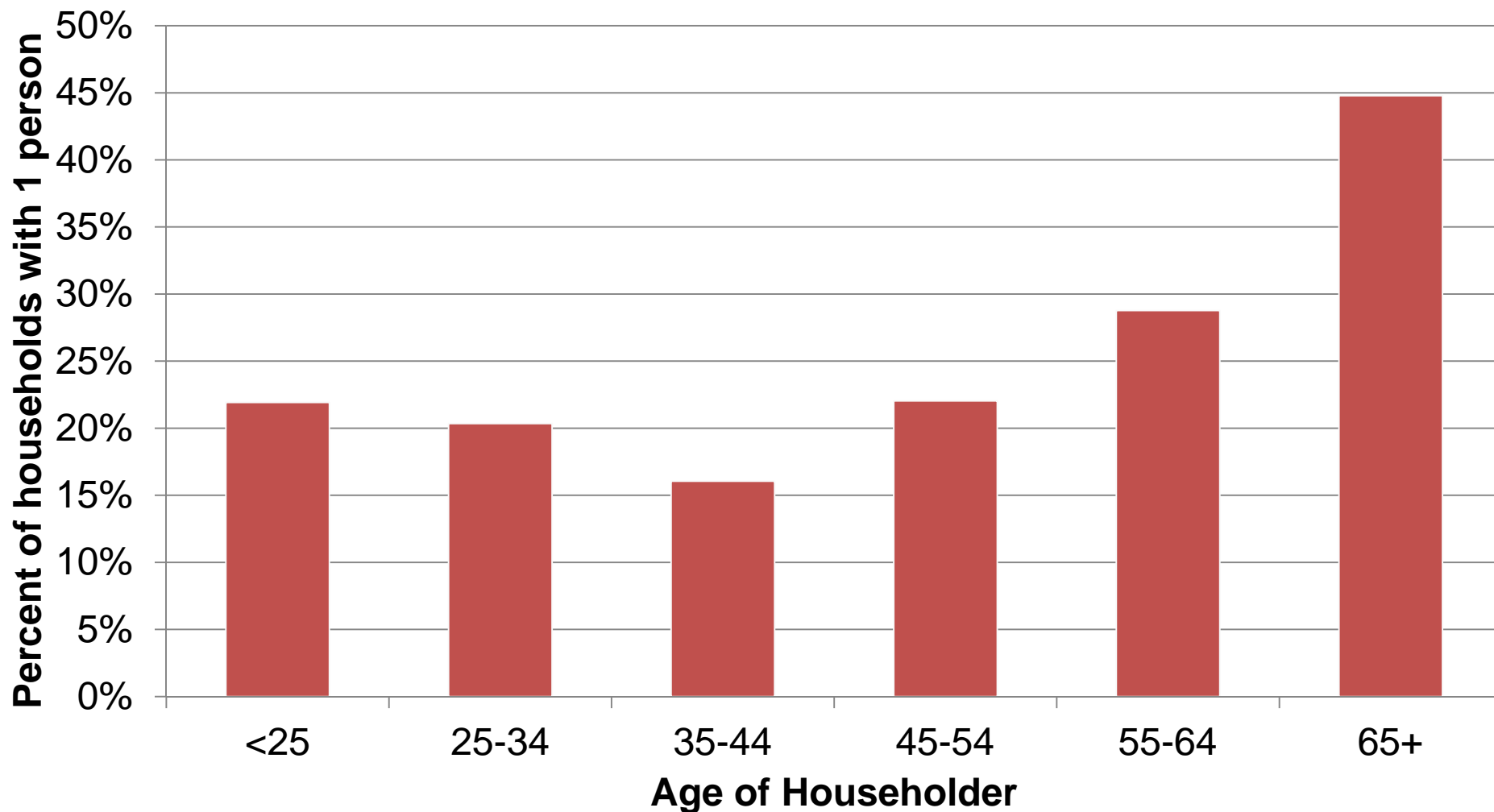
Source: U.S. Census Bureau, Current Population Survey, Annual Social and Economic Supplements, 1996-2010

Percent of Households with one Person: 1960 to 2011



Source: U.S. Census Bureau, Current Population Survey, 1960 to 2011 Annual Social and Economic Supplements

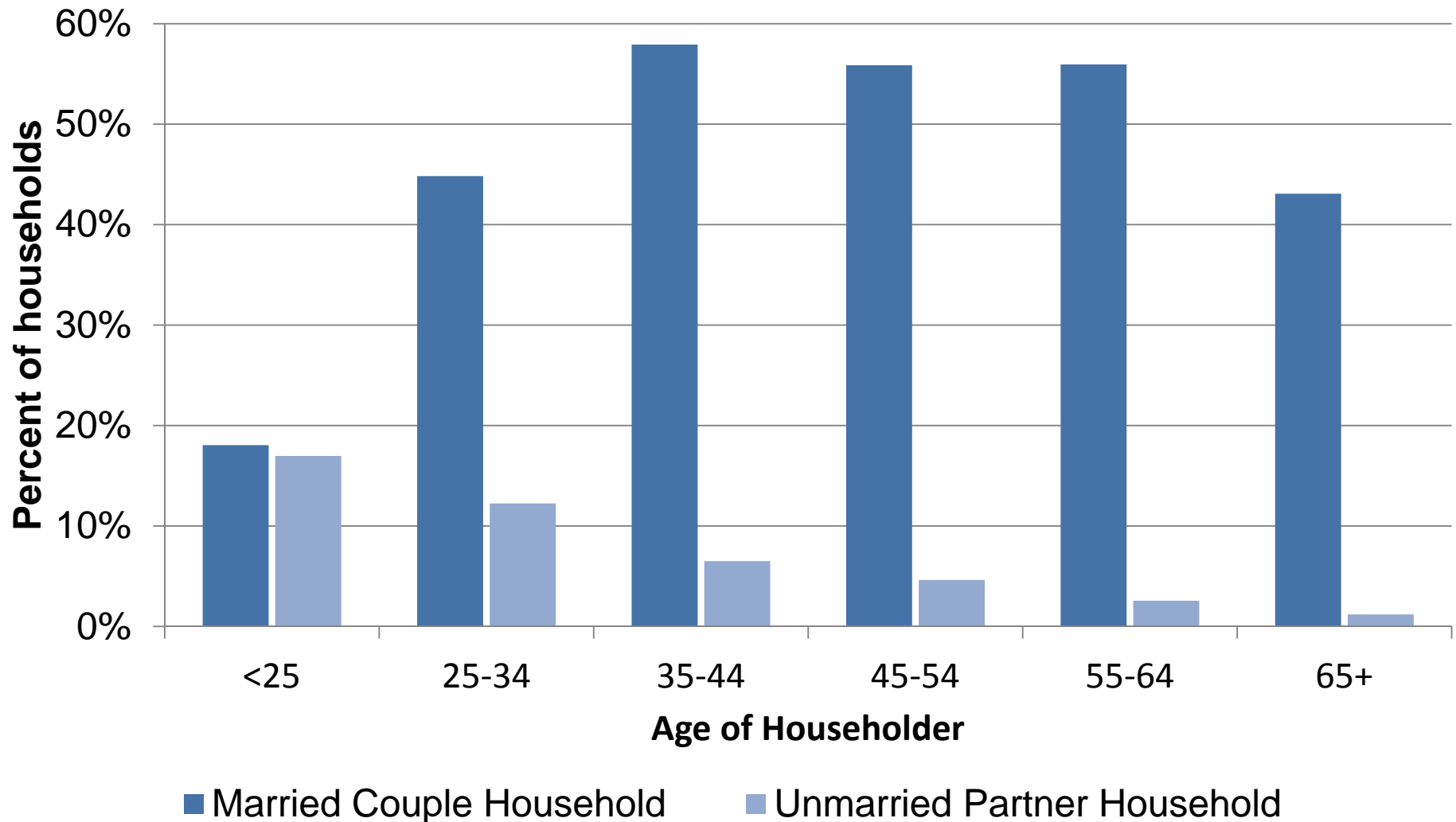
Percentage Single-Person Households by Age of Householder: 2010



Source: U.S. Census Bureau, Current Population Survey, Annual Social and Economic Supplements, 2010



Percentage Married-Couple and Unmarried Partner Households by Age of Householder: 2010

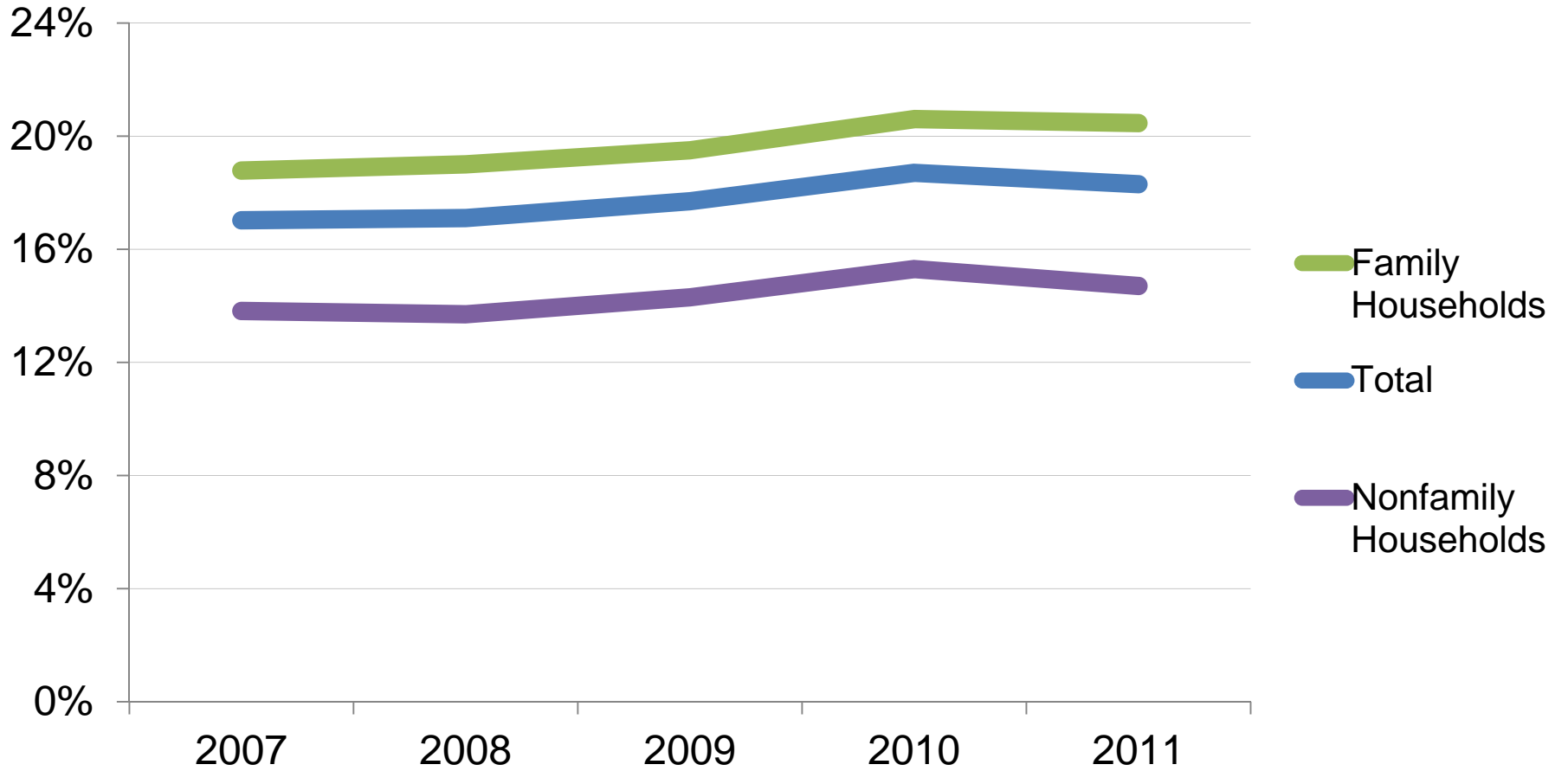


Source: U.S. Census Bureau, Current Population Survey, Annual Social and Economic Supplements, 2010

Definitions

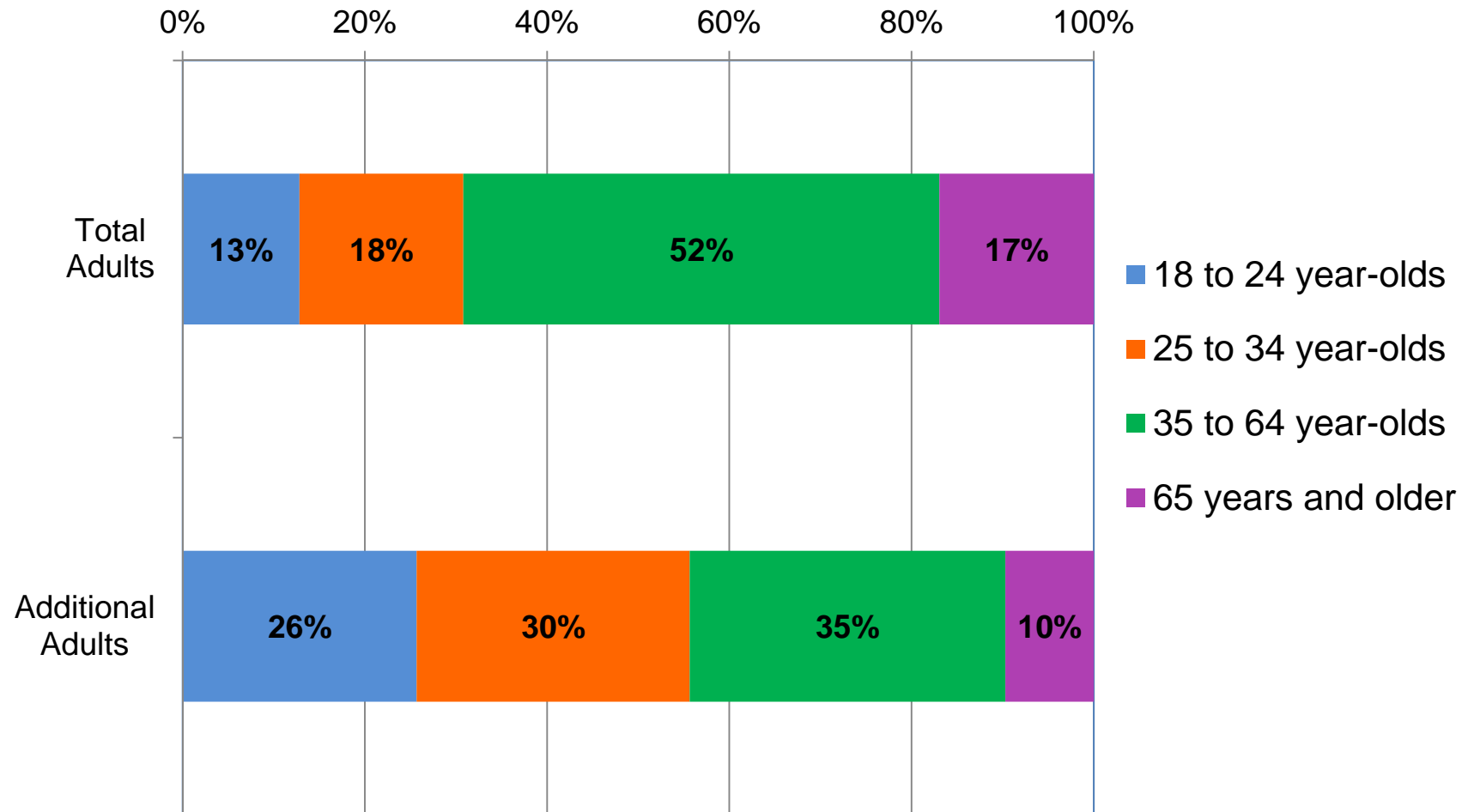
- **Additional adult** - a person aged 18 years or older who is not the householder nor his or her spouse or cohabiting partner and is not enrolled in school.
- **Family households** are headed by a householder living with at least one relative.
- **Non-family households** include one or more unrelated adults sharing a household.

Percentage of Households with At Least One Additional Adult, 2007 to 2011



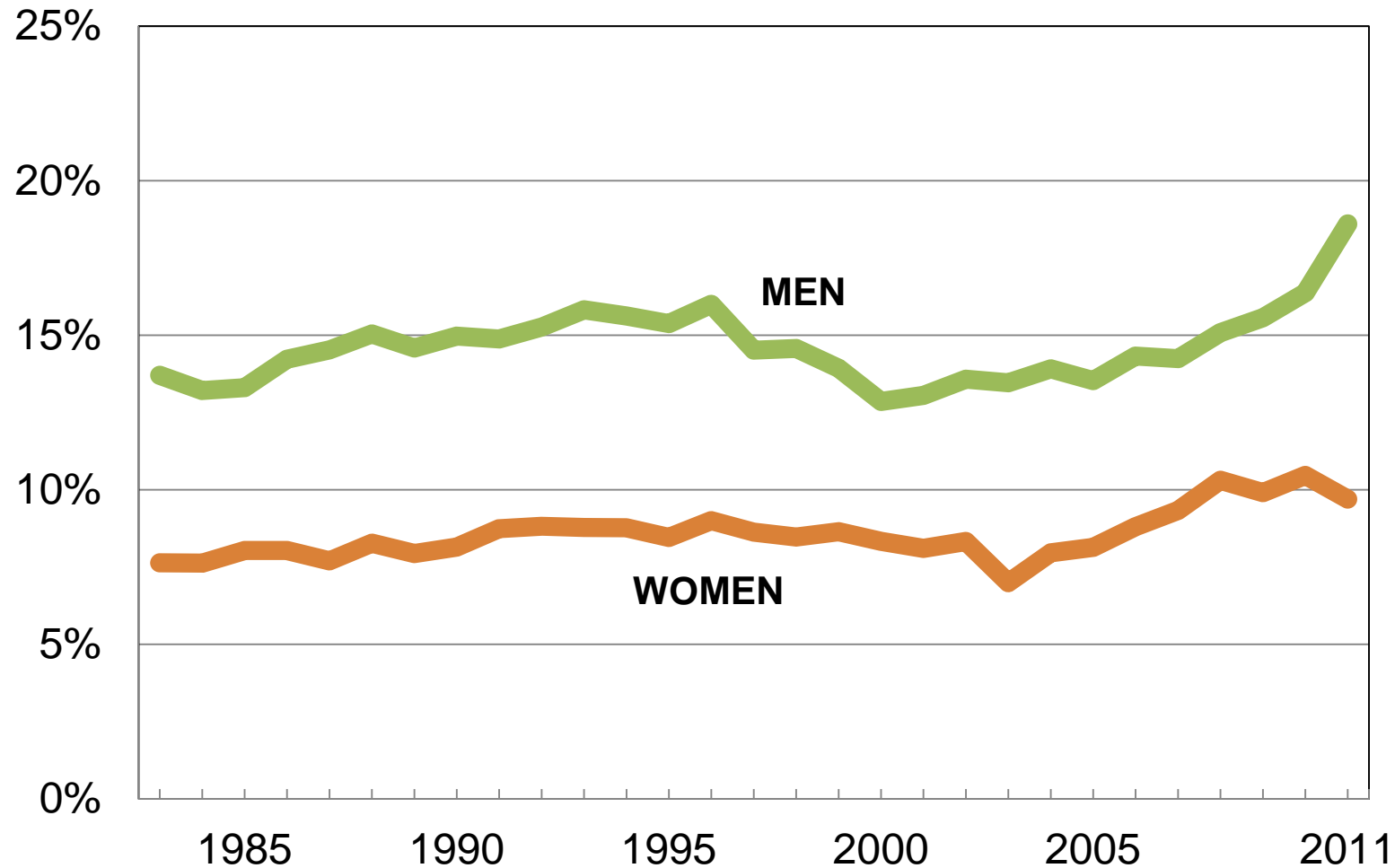
Source: Current Population Survey Annual Social and Economic Supplement, 2007 to 2011

Distribution of Total Adult Population and Additional Adults by Age Category, 2011



Source: Current Population Survey Annual Social and Economic Supplement, 2011

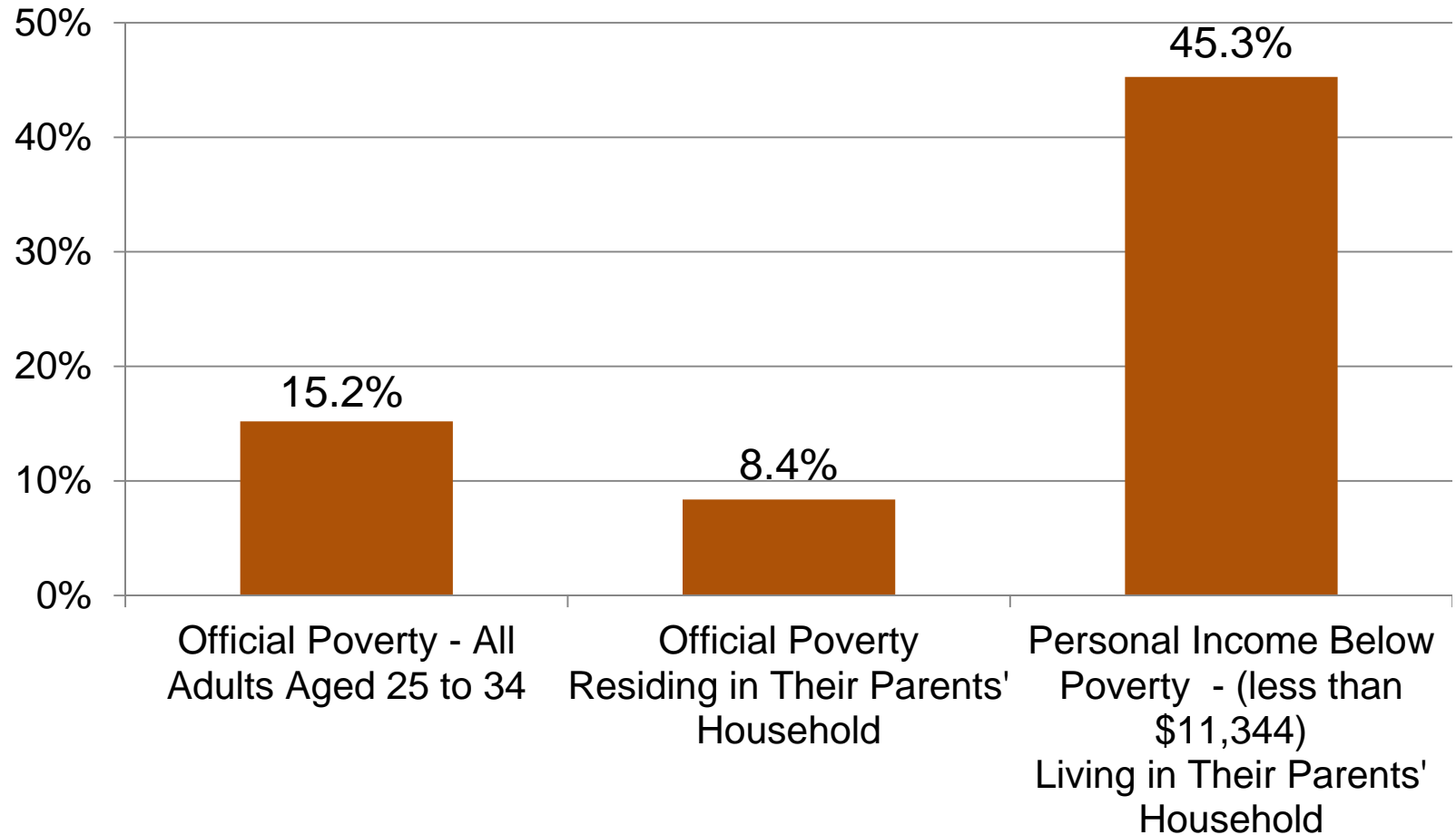
Percent of Adults Aged 25 to 34 Who are the Child of the Householder: 1983 to 2011



Source: U.S. Census Bureau, Current Population Survey, 1983 to 2011 Annual Social and Economic Supplements.

NOTE: In CPS data, unmarried college students living in dormitories are counted as living in their parent(s) home.

Poverty Rates of Adults Aged 25 to 34 Years: 2010



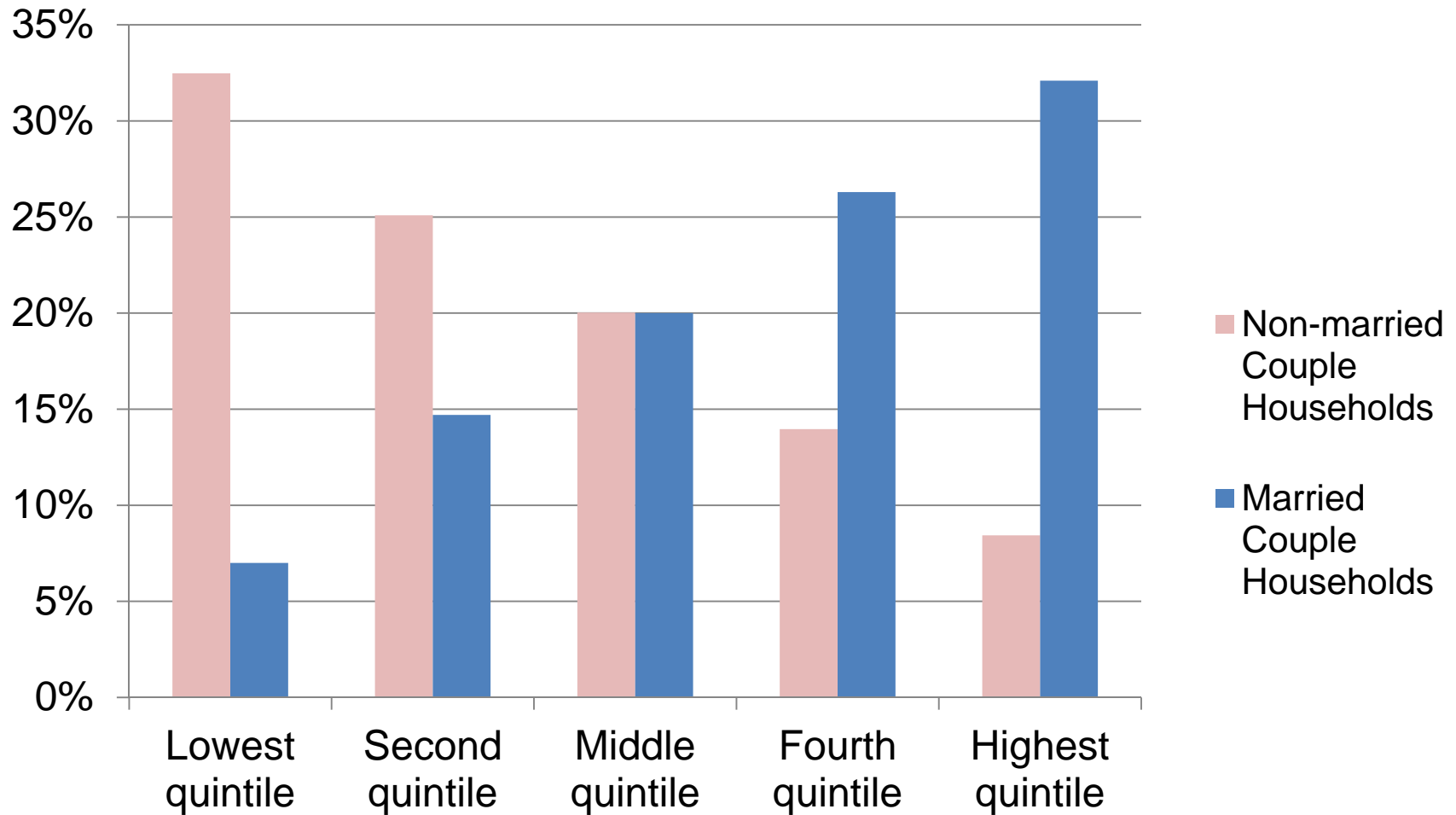
Source: Current Population Survey Annual Social and Demographic Supplement, 2011

Definitions

Median Household Income - The income value where half the households have incomes above and half below;

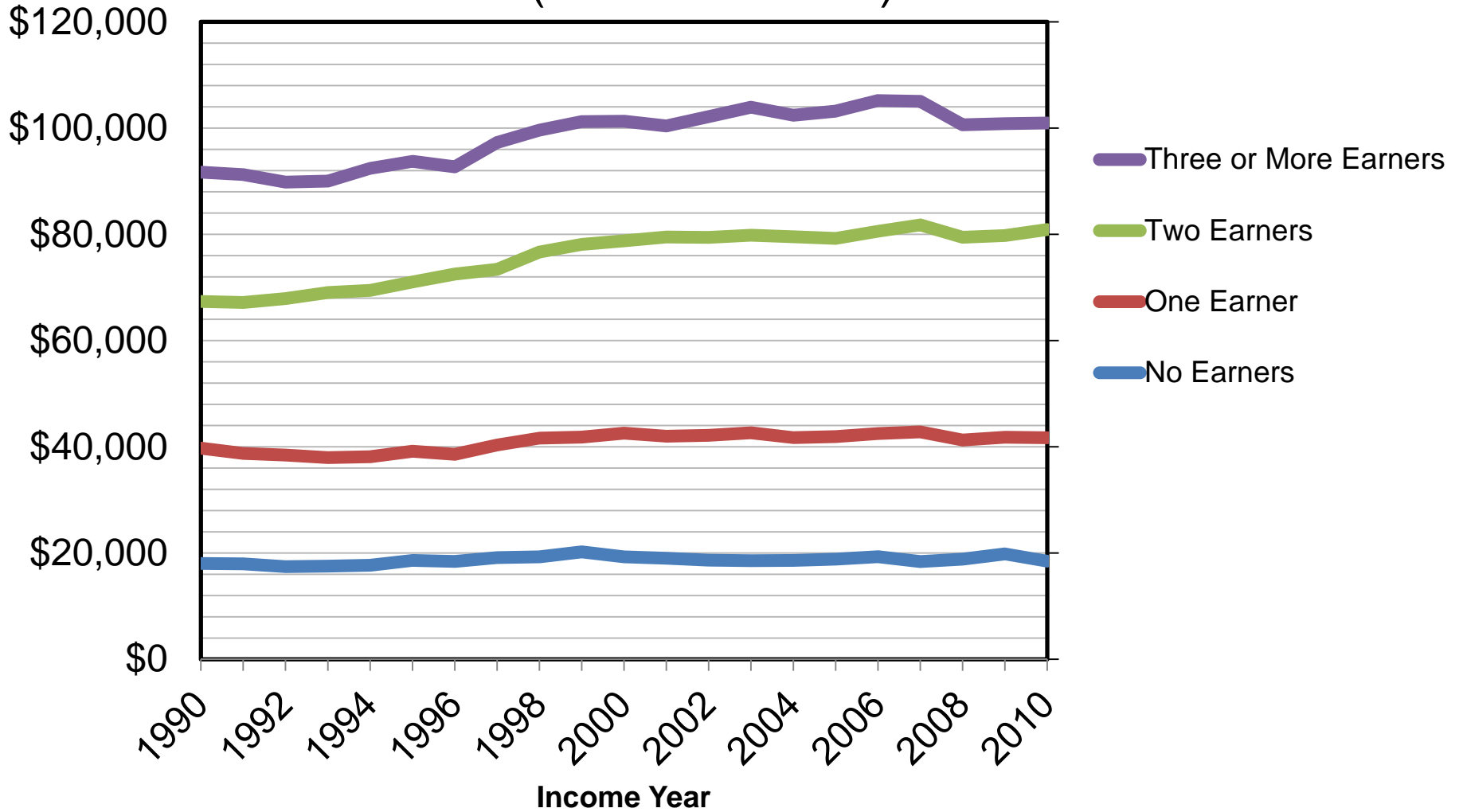
Quintiles - Each quintile contains 20% of households; in 2010 the lowest quintile had incomes below \$20,000, the second between \$20,000 and \$38,040, the middle between \$38,040 and \$61,720, the fourth between \$61,720 and \$100,085, the highest had incomes above \$100,085.

Income Distribution of Married and Non-married Couple Households



Source: U.S. Census Bureau, Current Population Survey, Annual Social and Economic Supplement, 2011

Median Household Income by Number of Earners: 1990-2010 (In 2010 dollars)



Source: U.S. Census Bureau, Current Population Survey, Annual Social and Economic Supplements, 1991 to 2011



Changing American Households

www.census.gov