



Cornell University  
ILR School

Cornell University ILR School  
**DigitalCommons@ILR**

---

Federal Publications

Key Workplace Documents

---

3-2011

# Workplace Violence, 1993-2009: National Crime Victimization Survey and the Census of Fatal Occupational Injuries

Erika Harrell PhD.  
*U.S. Department of Justice*

Follow this and additional works at: [http://digitalcommons.ilr.cornell.edu/key\\_workplace](http://digitalcommons.ilr.cornell.edu/key_workplace)

---

This Article is brought to you for free and open access by the Key Workplace Documents at DigitalCommons@ILR. It has been accepted for inclusion in Federal Publications by an authorized administrator of DigitalCommons@ILR. For more information, please contact [hlmdigital@cornell.edu](mailto:hlmdigital@cornell.edu).

---

# Workplace Violence, 1993-2009: National Crime Victimization Survey and the Census of Fatal Occupational Injuries

## **Abstract**

[Excerpt] This report provides an overview of fatal and nonfatal violence in the workplace. It discusses differences in workplace violence among various occupations. It includes trend information and discusses victim demographics and crime characteristics such as victim injury and police notification. It also includes comparisons to violence outside of the workplace against employed persons and violence against persons not employed.

## **Keywords**

workplace violence, workplace, injury, violence, Department of Justice

## **Comments**

### **Suggested Citation**

Harrell, E. (2011). *Workplace Violence, 1993-2009: National Crime Victimization Survey and the Census of Fatal Occupational Injuries* [Electronic version]. Washington, DC: U.S. Department of Justice.

[http://digitalcommons.ilr.cornell.edu/key\\_workplace/809](http://digitalcommons.ilr.cornell.edu/key_workplace/809)



# Workplace Violence, 1993-2009

## National Crime Victimization Survey and the Census of Fatal Occupational Injuries

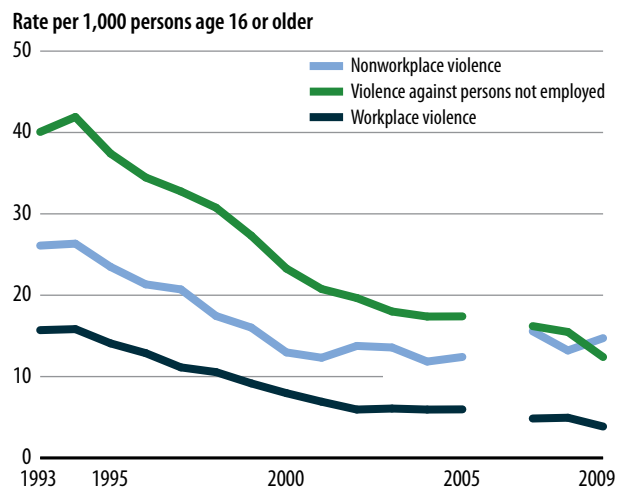
by Erika Harrell, Ph.D., *BJS Statistician*

In 2009, approximately 572,000 nonfatal violent crimes (rape/sexual assault, robbery, and aggravated and simple assault) occurred against persons age 16 or older while they were at work or on duty, based on findings from the National Crime Victimization Survey (NCVS). This accounted for about 24% of nonfatal violence against employed persons age 16 or older. Nonfatal violence in the workplace was about 15% of all nonfatal violent crime against persons age 16 or older.

The rate of violent crime against employed persons has declined since 1993. In 2009, an estimated 4 violent crimes per 1,000 employed persons age 16 or older were committed while the victims were at work or on duty, compared to 6 violent crimes per 1,000 employed persons age 16 or older in 2002. In 1993, the rate of nonfatal violence was 16 violent crimes per 1,000 employed persons while at work, a rate 75% higher than in 2009 (figure 1).

According to 2009 preliminary data, 521 persons age 16 or older were victims of homicide in the workplace. In about a third of workplace homicides from 2005-2009, the victim worked in a sales or office occupation. The data on homicides in this report are based on the Bureau of Labor Statistics' Census of Fatal Occupational Injuries (CFOI).

**FIGURE 1**  
Workplace and nonworkplace nonfatal violence against employed and persons not employed age 16 or older, 1993-2009



Note: See page 2 for definition of terms. Data from 2006 not included. See *Methodology*.  
Source: National Crime Victimization Survey.

## HIGHLIGHTS

- From 2002 to 2009, the rate of nonfatal workplace violence has declined by 35%, following a 62% decline in the rate from 1993 to 2002.
- The average annual rate of workplace violence between 2005 and 2009 (5 violent crimes per 1,000 employed persons age 16 or older) was about one-third the rate of nonworkplace violence (16 violent crimes per 1,000 employed persons age 16 or older) and violence against persons not employed (17 violent crimes per 1,000 persons age 16 or older).
- Between 2005 and 2009, law enforcement officers, security guards, and bartenders had the highest rates of nonfatal workplace violence.
- Strangers committed the greatest proportion of nonfatal workplace violence against males (53%) and females (41%) between 2005 and 2009.
- Among workplace homicides that occurred between 2005 and 2009, about 28% involved victims in sales and related occupations and about 17% involved victims in protective service occupations.
- About 70% of workplace homicides were committed by robbers and other assailants while about 21% were committed by work associates between 2005 and 2009.
- Between 2005 and 2009, while firearms were used in 5% of nonfatal workplace violence, shootings accounted for 80% of workplace homicides.

This report provides an overview of fatal and nonfatal violence in the workplace. It discusses differences in workplace violence among various occupations. It includes trend information and discusses victim demographics and crime characteristics such as victim injury and police notification. It also includes comparisons to violence outside of the workplace against employed persons and violence against persons not employed.

### Workplace violence declined more rapidly than nonworkplace violence from 1993 to 2009

The 2009 rate of workplace violence (4 violent crimes per 1,000 employed persons age 16 or older) was 35% lower than the 2002 rate of workplace violence (6 violent crimes per 1,000). The 2009 rate of nonworkplace violence was 37% lower than the 2002 nonworkplace violence rate. There was no statistically significant difference detected in the 2002

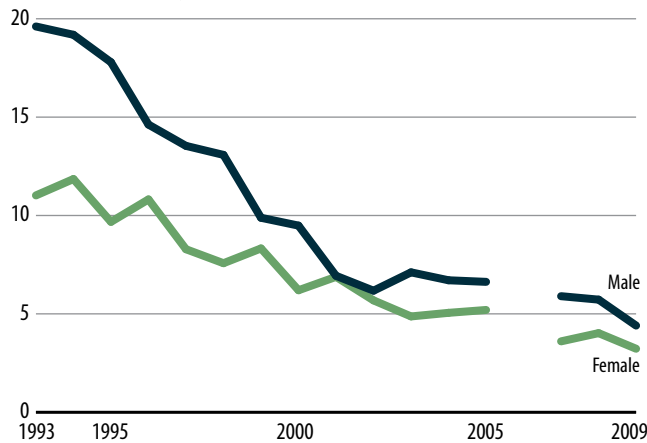
and 2009 rates of violence against persons not employed. From 1993 to 2002, the rate of workplace violence declined by 62%. In comparison, the rate of nonworkplace violence was 51% lower in 2002 than in 1993 and the rate of violence against persons not employed was 47% lower in 2002 than in 1993.

### Workplace violence declined more rapidly for males than females from 1993 to 2009

The 2009 workplace violence rate for males was 29% lower than the 2002 rate (figure 2). The rate for females in 2009 was 43% lower than their 2002 rate. The rate of workplace violence against males was 69% lower in 2002 than in 1993. In comparison, the rate of workplace violence against females was 48% lower in 2002 than in 1993. There was no statistically significant difference detected in the 2002 or 2009 rates of workplace violence for males and females.

**FIGURE 2**  
Workplace violence, by sex, 1993–2009

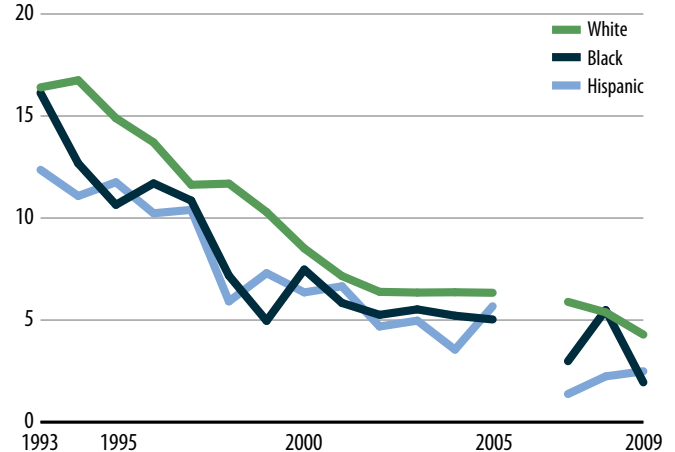
Rate per 1,000 employed persons age 16 or older



Note: Excludes 2006 data. See *Methodology*.  
Source: *National Crime Victimization Survey*.

**FIGURE 3**  
Workplace violence rates, by race/ethnicity, 1993–2009

Rate per 1,000 employed persons age 16 or older



Note: White and black do not include persons of Hispanic or Latino origin. Hispanic includes all racial groups. Excludes 2006 data. See *Methodology*.  
Source: *National Crime Victimization Survey*.

## Definition of terms

**Workplace**—Place where an employed person is working or on duty.

**Workplace violence**—Nonfatal violence (rape/sexual assault, robbery, and aggravated and simple assault) against employed persons age 16 or older that occurred while they were at work or on duty.

**Nonworkplace violence**—Nonfatal violence (rape/sexual assault, robbery, and aggravated and simple assault) against employed persons age 16 or older that occurred while they were not at work or on duty.

**Violence against persons not employed**—Nonfatal violence (rape/sexual assault, robbery, and aggravated and simple assault) against persons age 16 or older who did not have a job at the time of the crime.

**Workplace homicide**—Homicide of employed victims age 16 or older who were killed while at work or on duty. Excludes death by accident.

Source: *National Crime Victimization Survey and Census of Fatal Occupational Injuries*.

The 2009 workplace violence rate was 33% lower than the 2002 rate for whites (figure 3). The 2009 workplace violence rate against blacks was 63% lower than the 2002 rate for blacks. Workplace violence rates against whites, blacks, and Hispanics were at least 60% lower in 2002 than in 1993.

**Workplace violence occurred at a lower rate than both nonworkplace violence and violence against persons not employed**

From 2005 through 2009, the average annual rate of violent victimization in the workplace against employed persons age 16 or older was about 5 violent crimes per 1,000 persons (table 1). In comparison, the average annual rate of nonworkplace violence was about 16 violent crimes per 1,000 employed persons ages 16 or older. The average annual rate of violence against persons not employed was about 17 violent crimes per 1,000 ages 16 or older. For each type of nonfatal violent crime examined, rates of workplace violence were lower than rates of nonworkplace violence for employed people and violence against persons not employed.

Workplace violence was less likely to include serious violence (rape/sexual assault, robbery, and aggravated assault) than nonworkplace violence and violence against persons not employed. About a fifth of workplace violence from 2005 through 2009 consisted of serious violent crime, compared to almost two-fifths of nonworkplace violence and violence against persons not employed. The percentage of robbery in the workplace (3%) was a fourth the percentage for nonworkplace violence and violence against persons not employed. Simple assault accounted for almost 80% of workplace violence while it constituted about 61% of violence against persons not employed and 62% of nonworkplace violence.

**TABLE 1**  
**Workplace and nonworkplace violence and violence against persons not employed, by type of crime, 2005–2009**

Type of crime	Average annual rate of violence per 1,000 persons age 16 or older in—			Percent of nonfatal violence in—		
	Workplace <sup>a</sup>	Nonworkplace <sup>b</sup>	Not employed <sup>c</sup>	Workplace <sup>a</sup>	Nonworkplace <sup>b</sup>	Not employed <sup>c</sup>
<b>Total</b>	5.1	16.4	16.6	100.0%	100.0%	100.0%
<b>Serious violent crime</b>	1.1	6.3	6.5	22.2	38.5	38.8
Rape/sexual assault	0.1	0.6	1.0	2.3	3.8	6.0
Robbery	0.2	2.3	2.2	3.1	14.0	13.3
Aggravated assault	0.9	3.4	3.2	16.8	20.7	19.4
<b>Simple assault</b>	4.0	10.1	10.2	77.8	61.5	61.2

Note: Serious violent crime includes rape/sexual assault, robbery, and aggravated assault. Details do not sum to total due to rounding. Includes 2006 data. See *Methodology*.

<sup>a</sup>Workplace violence occurs against an employed person age 16 or older while at work or on duty.

<sup>b</sup>Nonworkplace violence occurs against an employed person age 16 or older while not at work or on duty.

<sup>c</sup>Violence against persons not employed occurs against a person age 16 or older who did not have a job at the time of the crime.

Source: *National Crime Victimization Survey*.

**From 2005 through 2009 persons working in law enforcement experienced about 19% of workplace violence while accounting for 2% of employed persons**

Among the occupations measured, persons in law enforcement experienced the highest proportion (19%) of workplace violence (table 2). Persons in retail sales occupations experienced about 13% of workplace violence while accounting for about 9% of employed persons. About 10% of victims of workplace violence worked in medical occupations.

**Law enforcement officers, security guards, and bartenders had the highest rate of workplace violence**

From 2005 through 2009, of the occupational groups examined, law enforcement occupations had the highest average annual rate of workplace violence (48 violent crimes per 1,000 employed persons age 16 or older), followed by mental health occupations (21 per 1,000). Among the individual occupations examined, no occupation had workplace violence rates higher than those for law enforcement officers, security guards, and bartenders.

**TABLE 2**  
**Workplace and nonworkplace violence, by occupation, 2005–2009**

Occupation	Rate of workplace violence per 1,000 employed persons age 16 or older	Nonworkplace violence rate per 1,000 employed persons age 16 or older	Percentage of workplace violence	Percentage of employed population age 16 or older
<b>Total</b>	5.1	16.4	100.0%	100.0%
<b>Medical</b>	6.5	15.0	10.2%	8.2%
Physician	10.1	7.7*	1.1	0.6
Nurse	8.1	13.8	3.9	2.5
Technician	11.1	12.2	2.3	1.1
Other/medical occupations	3.7	17.5	2.9	4.1
<b>Mental health</b>	20.5	17.2	3.9%	1.0%
Professional	17.0	12.8	1.4	0.4
Custodial care	37.6*	4.4*	0.7*	0.1
Other mental health occupations	20.3	24.1	1.8	0.5
<b>Teaching</b>	6.5	8.8	9.0%	7.2%
Preschool	0.9*	9.8	0.1*	0.5
Elementary	4.3	4.7	1.5	1.9
Jr. high/middle	8.6	5.0*	1.3	0.8
High school	13.5	7.4	2.6	1.0
College/university	1.9*	14.1	0.7*	1.9
Technical /industrial school	54.9*	--*	0.7*	0.1
Special education facility	17.8*	8.0*	0.5*	0.2
Other teaching occupations	8.9	11.4	1.6	0.9
<b>Law enforcement</b>	47.7	13.7	18.9%	2.1%
Law enforcement officer	77.8	3.5*	9.1	0.6
Corrections officer	33.0	13.0*	1.8	0.3
Security guard	65.0	23.1	5.6	0.5
Other law enforcement occupations	17.5	16.7	2.4	0.7
<b>Retail sales</b>	7.7	24.3	13.2%	9.0%
Convenience or liquor store clerk	7.1*	25.1	0.7*	0.5
Gas station attendant	30.2*	25.9*	0.8*	0.1
Bartender	79.9	38.7*	1.9	0.1
Other retail sales occupations	6.3	24.0	9.8	8.2
<b>Transportation</b>	12.2	12.9	7.4%	3.2%
Bus driver	10.0*	3.1*	0.6*	0.3
Taxi cab driver	9.0*	33.3*	0.2*	0.1
Other transportation occupations	12.6	13.4	6.6	2.7
<b>Other/unspecified</b>	2.8	16.6	37.3%	69.3%

Note: The National Crime Victimization Survey and Census of Fatal Occupational Injuries use different categories of occupations. Includes 2006 data. See *Methodology*.

\*Based on 10 or fewer sample cases.

--Less than 0.05.

Source: *National Crime Victimization Survey*.

Bartenders (80 per 1,000) had the highest workplace violence rate of all retail sales occupations. Persons working in all mental health occupations had a similar rate of workplace violence. Among teaching occupations, no occupation had a higher rate of workplace violence than persons working in technical or industrial schools. All transportation occupations had a similar rate of workplace violence.

**TABLE 3**  
**Rate of workplace and nonworkplace violence, by sex, race/Hispanic origin, age, marital status, and annual household income, 2005–2009**

Victim characteristic	Rate of nonfatal violence per 1,000 employed persons age 16 or older in—	
	Workplace	Nonworkplace
<b>Total</b>	5.1	16.4
<b>Sex</b>		
Male	5.9	17.2
Female	4.1	15.5
<b>Race/Hispanic origin</b>		
White <sup>a</sup>	5.7	15.3
Black/African American <sup>a</sup>	4.1	20.4
Hispanic/Latino <sup>b</sup>	3.0	18.0
American Indian <sup>a</sup>	13.0	33.9
Asian/Pacific Islander <sup>a</sup>	3.6	8.2
Two or more races <sup>a</sup>	7.8	60.3
<b>Age</b>		
16-19 years old	3.2	46.9
20-24	6.9	36.0
25-34	6.9	19.5
35-49	4.9	12.4
50-64	3.9	7.4
65 or older	1.7	3.0
<b>Marital status</b>		
Never married	6.2	29.3
Married	4.3	7.2
Widowed	5.1	7.6
Divorced or separated	6.4	29.2
<b>Annual household income</b>		
Less than \$7,500	2.8*	55.7
\$7,500 to \$14,999	7.2	39.8
\$15,000 to \$24,999	6.2	26.2
\$25,000 to \$34,999	5.2	23.1
\$35,000 to \$49,999	4.9	17.5
\$50,000 to \$74,999	7.0	11.6
\$75,000 or more	4.4	9.8
Unknown	4.3	15.8

Note. Includes 2006 data. See *Methodology*.

\*Based on 10 or fewer sample cases.

<sup>a</sup>Excludes persons of Hispanic or Latino origin.

<sup>b</sup>Includes all racial groups.

Source: *National Crime Victimization Survey*.

### Persons working in custodial care, technical/industrial schools, and law enforcement had higher rates of workplace violence than nonworkplace violence

The rate of workplace violence was greater than the rate of nonworkplace violence for several occupations examined. For persons in custodial care occupations, workers in technical/industrial schools, law enforcement officers, corrections officers, and security guards, the rate of workplace violence was higher than the rate of nonworkplace violence. For nurses and persons working in preschools and colleges/universities, and convenience store/liquor store clerks, the rate of workplace violence was lower than the rate of violence outside of the workplace.

No occupational group had a higher rate of nonworkplace violence than retail sales occupations. All retail sales occupations had an equal rate of nonworkplace violence. While law enforcement officers and security guards were among the occupations with the highest rate of workplace violence, these occupations did not have the highest rate of nonworkplace violence among the examined occupations.

### For all gender and racial groups examined, the rate of workplace violence was lower than the rate of nonworkplace violence

From 2005 through 2009, males had a higher rate of workplace violence and a slightly higher rate of nonworkplace violence than females (table 3). Whites had a higher rate of workplace violence than blacks, while blacks had a higher rate of nonworkplace violence than whites. There was no statistically significant difference between whites and American Indians in the rate of workplace violence. Hispanics were similar to blacks and Asians in their rates of workplace violence. Asians were the least likely of all racial/ethnic groups examined to experience nonworkplace violence.

Among employed persons, those ages 20 to 34 had the highest rate of workplace violence while persons ages 16 to 19 had the highest rate of nonworkplace violence. Persons who had never married had a higher rate of workplace violence than those who were married and the same rate as persons who were widowed, divorced, or separated. Persons in households with annual incomes of \$50,000 to \$74,999 had similar rates of workplace violence as persons in households with annual incomes of \$7,500 to \$14,999. Individuals in households with lower annual incomes had a higher rate of nonworkplace violence than individuals in households with higher annual incomes.



**From 2005 through 2009 victims of workplace violence had a higher percentage of males, whites, married persons, and persons in households with larger annual incomes than victims of nonworkplace violence**

Males accounted for about 63% of victims of workplace violence and 57% of victims of nonworkplace violence (table 4). Whites made up a larger percentage of workplace violence victims (78%) than nonworkplace violence victims (66%). Both blacks and Hispanics accounted for smaller percentages of victims of workplace violence (9% black, 8% Hispanic) than victims of nonworkplace violence (13% black, 15% Hispanic).

**TABLE 4**  
**Percent of workplace and nonworkplace violence and employed persons, by sex, race/Hispanic origin, age, marital status and annual household income, 2005–2009**

Victim characteristic	Percent of nonfatal violence victims		Percent of employed persons age 16 or older
	Workplace	Nonworkplace	
<b>Total</b>	100.0%	100.0%	100.0%
<b>Sex</b>			
Male	62.9%	56.7%	54.1%
Female	37.1	43.3	45.9
<b>Race/Hispanic origin</b>			
White <sup>a</sup>	77.9%	65.5%	70.0%
Black/African American <sup>a</sup>	8.7	13.4	10.8
Hispanic/Latino <sup>b</sup>	7.8	14.8	13.5
American Indian <sup>a</sup>	1.3	1.0	0.5
Asian/Pacific Islander <sup>a</sup>	3.1	2.2	4.4
Two or more races <sup>a</sup>	1.3	3.0	0.8
<b>Age</b>			
16-19 years old	3.0%	13.7%	4.8%
20-24	13.7	22.1	10.1
25-34	29.3	25.8	21.7
35-49	34.0	26.8	35.4
50-64	18.8	10.9	24.3
65 or older	1.3	0.7	3.8
<b>Marital status</b>			
Never married	35.0%	51.7%	29.0%
Married	47.2	24.8	56.4
Widowed	1.8	0.9	1.9
Divorced or separated	16.0	22.6	12.7
<b>Annual household income</b>			
Less than \$7,500	1.0%*	6.2%	1.8%
\$7,500 to \$14,999	4.4	7.5	3.1
\$15,000 to \$24,999	7.8	10.2	6.4
\$25,000 to \$34,999	8.2	11.4	8.1
\$35,000 to \$49,999	12.2	13.4	12.5
\$50,000 to \$74,999	22.4	11.5	16.3
\$75,000 or more	23.5	16.4	27.5
Unknown	20.6	23.4	24.3

Note: Details do not sum to total due to rounding. Includes 2006 data. See *Methodology*.

\*Based on 10 or fewer sample cases.

<sup>a</sup> Excludes persons of Hispanic or Latino origin.

<sup>b</sup> Includes all racial groups.

Source: *National Crime Victimization Survey*.

Workplace violence had a larger proportion of older victims than nonworkplace violence. About 54% of workplace violence victims were ages 35 or older while 39% of nonworkplace violence victims were of similar ages. About 17% of workplace violence victims were ages 16 to 24 while about 36% of nonworkplace violence victims fell into this age category.

About 35% of victims of workplace violence had never married, compared to about 52% of victims of nonworkplace violence. Married persons accounted for about 47% of workplace violence victims and about 25% of nonworkplace violence victims. About 46% of victims of workplace violence were in households with annual incomes of at least \$50,000, compared to about 28% of victims of nonworkplace violence.

**Strangers committed the greatest proportion of workplace violence**

From 2005 through 2009, strangers committed about 53% of workplace violence against males and about 41% against females (table 5). Similar proportions of males and females were victims of intimate partner violence in the workplace. About a quarter (26%) of workplace violence against males and about a third against females were committed by someone with whom the victim had a work relationship.<sup>1</sup> Among the work relationships examined, coworkers were the most likely to attack persons in the workplace. Current or former coworkers committed 16% of workplace violence against males and about 14% against females. Patients committed a higher percentage of workplace violence against females than males.

<sup>1</sup>Work relationships include offenders who were customers, clients, patients, and current or former supervisors, employees, or coworkers of the victim.

**TABLE 5**  
**Victim/offender relationship for victims of workplace violence, by sex, 2005–2009**

Victim/offender relationship	Percent of workplace violence	
	Male	Female
<b>Total</b>	100.0%	100.0%
<b>Intimate partner</b>	0.8*	1.7*
<b>Other relatives</b>	0.6*	0.7*
<b>Well-known/casual acquaintances</b>	11.7	18.9
<b>Work relationships</b>	25.5%	31.7%
Customer/client	3.9	6.5
Patient	1.5*	6.0
Current or former—		
Supervisor	1.2*	3.3
Employee	2.6	1.7*
Co-worker	16.3	14.3
<b>Do not know relationship</b>	8.5%	6.1%
<b>Stranger</b>	52.9%	40.9%

Note: Details do not sum to total due to rounding. Includes 2006 data. See *Methodology*.

\*Based on 10 or fewer sample cases.

Source: *National Crime Victimization Survey*.



### Victims of workplace violence were slightly less likely to have resisted their offenders than victims of nonworkplace violence

Three in 5 incidents of workplace violence involved victims who resisted their offenders (table 6). From 2005 through 2009, victims resisted their offenders in about 60% of all incidents of workplace violence. While equally likely to use nonconfrontational tactics, victims of workplace violence were less likely than victims of nonworkplace violence to threaten or attack an offender without a weapon.

**TABLE 6**  
Victim resistance during workplace and nonworkplace violence, 2005–2009

Resistance type	Percent of nonfatal violent victimizations in—	
	Workplace	Nonworkplace
Total	100.0%	100.0%
No resistance	39.6	35.2
Resisted	60.4	64.8
Threatened/attacked with a firearm	1.4	0.7
Threatened/attacked with other weapon	0.9*	1.1
Threatened/attacked without a weapon	18.3	25.8
Nonconfrontational tactics-yelling, running, argued with offender	29.1	32.4
Other reaction	10.6	4.8

Note: Excludes incidents in which the reaction was unknown. Details do not sum to total due to rounding. Includes 2006 data. See *Methodology*.

\*Based on 10 or fewer sample cases.

Source: *National Crime Victimization Survey*.

**TABLE 7**  
Perceived offender drug/alcohol use in workplace and nonworkplace violence, 2005–2009

Offender drug/alcohol use	Percent of nonfatal violent victimizations in—	
	Workplace	Nonworkplace
Total	100.0%	100.0%
Perceived to be using drugs or alcohol	24.5	36.6
Not using drugs or alcohol	39.5	21.9
Do not know	36.0	41.5

Note: Includes 2006 data. See *Methodology*.

Source: *National Crime Victimization Survey*.

### Workplace violence was less likely to involve an offender under the influence of alcohol or drugs than nonworkplace violence

A smaller percentage of workplace violence (25%) involved an offender under the influence of alcohol or drugs than nonworkplace violence (37%), according to victims (table 7). About 40% of workplace violence did not involve an offender under the influence of alcohol or drugs, compared to about 22% of nonworkplace violence.

### Firearms were less likely to be present in workplace violence than nonworkplace violence

Weapons were less likely to be present in workplace violence than during nonworkplace violence (table 8). From 2005 through 2009, weapons were present in about 18% of workplace violence and about 27% of nonworkplace violence. Firearms were present in about 5% of workplace violence and about 10% of nonworkplace violence.

**TABLE 8**  
Weapons presented by offender in workplace violence and nonworkplace violence, 2005–2009

Weapon type	Percent of nonfatal violent victimizations in—	
	Workplace	Nonworkplace
Total	100.0%	100.0%
No weapon	77.5	65.4
Weapon	18.3	26.6
Firearm	5.2	10.4
Knife	5.2	6.8
Other Weapon	7.0	7.8
Unknown weapon type	1.0	1.6
Did not know if offender had weapon	4.2	8.0

Note: Details do not sum to total due to rounding. Includes 2006 data. See *Methodology*.

Source: *National Crime Victimization Survey*.

From 2005 through 2009, victims of workplace violence (13%) were less likely to be injured than victims of nonworkplace violence (29%) (table 9). The percentage of workplace violence victims who had serious injuries (2%) was lower than the percentage of victims of nonworkplace violence (4%) (table 10).

### Workplace violence was slightly less likely than nonworkplace violence to be reported to police

About 47% of workplace violence was reported to police, compared to about 52% of nonworkplace violence (table 11). A smaller percentage of nonworkplace violence against males was reported to police than nonworkplace violence against females. However, police notification of workplace violence did not differ by the victim's gender. No statistically significant differences were found between the percentages of nonworkplace and workplace violence against whites, blacks, American Indians, and Asians reported to the police. For Hispanics, a slightly higher percentage of nonworkplace than workplace violence incidents was reported to the police.

**TABLE 9**  
Injury and treatment for victims of workplace and nonworkplace violence, 2005–2009

Injury/treatment	Percent of nonfatal violent victimizations in—	
	Workplace	Nonworkplace
Total	100.0%	100.0%
Not injured	86.7	71.1
Injured	13.3	28.7
Not treated	7.0	16.7
Treated	6.3	12.0
Do not know	—*	0.1*

Note: Details do not sum to total due to rounding. Includes 2006 data. See *Methodology*.

— Rounds to less than 0.05%.

\*Based on 10 or fewer sample cases.

Source: *National Crime Victimization Survey*.

**TABLE 10**  
Injury type, workplace and nonworkplace violence, 2005–2009

Injury type	Percent of nonfatal violent victimizations in—	
	Workplace	Nonworkplace
Total	100.0%	100.0%
No injury	86.7	71.1
Serious injury	1.8	4.4
Minor injury	11.3	23.2
Rape without other injuries	0.1*	1.1
Do not know	0.1*	0.2*

Note: Rape with other injuries was classified as either serious injury or minor injury. Includes 2006 data. See *Methodology*.

\*Based on 10 or fewer sample cases.

Source: *National Crime Victimization Survey*.

For victims ages 34 or younger, there was no statistically significant difference in the percentages of nonworkplace and workplace violence reported to the police. For victims ages 35 or older, workplace violence was at least slightly less likely than nonworkplace violence to be reported to police.

About 77% of workplace robberies were brought to the attention of the police. This percentage is lower than the percentages found for workplace rape/sexual assault and simple assault and similar to the percentage found for workplace aggravated assault. Robbery in the workplace was slightly more likely to be reported to police than robbery outside of the workplace.

**TABLE 11**  
Workplace and nonworkplace violence reported to the police, by sex, race/Hispanic origin, age, and type of crime, 2005–2009

Victim characteristic	Percent of nonfatal violent victimizations in—	
	Workplace	Nonworkplace
Total	46.7%	51.5%
Sex		
Male	49.2%	47.4%
Female	42.5	56.7
Race		
White <sup>a</sup>	47.6%	50.3%
Black/African American <sup>a</sup>	47.5	58.4
Hispanic/Latino <sup>b</sup>	33.9	51.7
American Indian/Alaska Native <sup>a</sup>	61.5*	62.6
Asian/Pacific Islander <sup>a</sup>	41.7	51.0
Two or more races <sup>a</sup>	64.5*	39.9
Age		
16-19 years old	28.3%*	39.8%
20-24	38.1	48.1
25-34	56.3	53.5
35-49	47.4	57.2
50-64	40.5	52.7
65 or older	33.1*	71.5
Type of crime		
Serious violent crime <sup>c</sup>	62.5%	58.6%
Rape/sexual assault	39.4	36.7
Robbery	76.8	59.4
Aggravated assault	63.0	62.1
Simple assault	42.2	47.0

Note: Excludes cases where reporting to the police was unknown. Includes 2006 data. See *Methodology*.

\*Based on 10 or fewer sample cases.

<sup>a</sup>Excludes persons of Hispanic or Latino origin.

<sup>b</sup>Includes all racial groups.

<sup>c</sup>Serious violent crime consists of rape/sexual assault, robbery and aggravated assault and excludes simple assault.

Source: *National Crime Victimization Survey*.

**The most common reasons for reporting workplace violence to the police were to stop or prevent an incident from happening (31%), prevent future incidents (21%), and stop attacker (20%)**

This rank ordering of reasons was similar to that for nonworkplace violence (41%, 31%, and 13%) (table 12). However, a lower percentage of workplace violence (31%)

**TABLE 12**  
Reason for reporting incident to police other than incident was a crime, by workplace and nonworkplace violence, 2005–2009

Reason reported	Percent of victims in—	
	Workplace	Nonworkplace
<b>Personal reasons</b>		
Stop or prevent this incident from happening	31.1%	41.4%
Needed help or injured	2.9*	3.9
Recover property	3.8	5.3
Collect insurance	0.4*	0.8*
Prevent future incidents against respondents	20.5	30.9
<b>Public safety-related reasons</b>		
Stop this offender from committing other crimes against anyone	19.9	13.3
Punish offender	10.1	11.6
Catch offender	4.7	8.1
Improve police surveillance	3.5*	5.3
Duty to let police know about crime	13.7	7.0
<b>Other</b>	9.4	4.5
<b>No other reason</b>	29.2	21.5

Note: Percentages sum to more than 100% because victims may have reported more than one reason. Includes 2006 data. See *Methodology*.

\*Based on 10 or fewer sample cases.

Source: *National Crime Victimization Survey*.

**TABLE 13**  
Reason for not reporting crime to police, by workplace and nonworkplace violence, 2005–2009

Reason not reported	Percent of victims in—	
	Workplace	Nonworkplace
Reported to another official	37.8%	6.7%
Personal matter	22.4	26.1
Not important enough	23.7	26.3
No insurance	0.2*	0.3*
Found out too late	0.4*	0.4*
Cannot recover property	--*	0.2*
Lack of proof	2.3	5.6
Police would not help	8.6	18.5
Protect offender	3.0	8.3
Advised not to report	0.5*	0.5
Fear of reprisal	3.8	6.4
Too inconvenient	2.1	7.9
Other	13.8	12.5
Does not know	0.3*	0.8

Note: Percentages sum to more than 100% because victims may have reported more than one reason. Includes 2006 data. See *Methodology*.

\*Based on 10 or fewer sample cases.

--Rounds to less than 0.05%.

Source: *National Crime Victimization Survey*.

was reported to the police than nonworkplace violence (41%) to stop or prevent the crime from happening. Reports intended to prevent the offender from committing future crimes against the victim were less likely for incidents of workplace violence (21%) than for incidents of nonworkplace violence (31%). About 14% of workplace violence was reported out of duty to inform the police about crime compared to 7% of nonworkplace violence that was reported for such a reason.

**The most common reason why workplace violence was not reported to the police was that the incident was reported to another official**

About 38% of workplace violence was not reported to the police because the incident was reported to another official, compared to about 7% of nonworkplace violence (table 13). Similar to the percentages of nonworkplace violence that were not reported to police, about 22% of workplace violence was not reported to police because the victim thought the incident was a personal matter. About 24% of workplace violence was not reported to police because the victim believed that the incident was not important enough to be reported.

**The number of homicides in the workplace decreased by 51% between 1993 and 2009**

According to the Bureau of Labor Statistics' Census of Fatal Occupational Injuries (CFOI), the number of victims ages 16 or older of workplace homicides decreased by 39% from 1,068 in 1993 to 648 in 1999 (figure 4). The number decreased again in 2004 to 559. In 2009, based on preliminary data, there were 521 workplace homicides, a decrease from 2008 when there were 526 workplace homicides.

**FIGURE 4**  
Workplace homicides, 1993–2009



Note: 2009 data are preliminary. Previous years are based on final data. Excludes fatalities due to the September 11th terrorist attack. Source: *Census of Fatal Occupational Injuries*, U.S. Department of Labor, Bureau of Labor Statistics.

### From 2005 through 2009, a third of workplace homicide victims worked in sales-related occupations

In about 33% of workplace homicides that occurred from 2005 through 2009, the victim worked in a sales or office occupation (table 14). This includes sales-related occupations, which made up 28% of the occupations of workplace homicide victims. A third of workplace homicide victims worked in service occupations, including persons working in protective services. Persons in protective service occupations accounted for 17% of workplace homicide victims.

**TABLE 14**  
Workplace homicides, by occupation of victim, 2005–2009

Occupation	Percent of workplace homicide victims age 16 or older
<b>Total</b>	100.0%
<b>Management, business and financial</b>	9.6%
Management	9.2
Business and financial operations	0.4
<b>Professional and related</b>	5.1%
Computer and mathematical	--*
Architecture and engineering	0.3*
Life, physical, and social science	0.1*
Community and social services	1.2
Legal	0.6
Education, training, and library	0.6
Arts, design, entertainment, sports, and media	1.1
Healthcare practitioners and technical	1.2
<b>Service</b>	30.4%
Healthcare support	0.7
Protective service	17.2
Food preparation and service-related	7.2
Building and grounds cleaning and maintenance	2.4
Personal care and service	2.9
<b>Sales and office</b>	32.8%
Sales and related	27.9
Office and administrative support	4.9
<b>Natural resources, construction, and maintenance</b>	6.5%
Farming, fishing, and forestry	0.8
Construction and extraction	3.0
Installation, maintenance and repair	2.7
<b>Production, transportation, and material moving</b>	15.7%
Production	2.4
Transportation and material moving	13.2

Note: The National Crime Victimization Survey and Census of Fatal Occupational Injuries use different categories of occupations. See *Methodology*. Includes 2009 data which are preliminary. Excludes homicides where the victim occupation was unknown. Details do not sum to total due to rounding.

\*Based on 10 or fewer cases.  
-- Rounds to less than 0.05%.

Source: *Census of Fatal Occupational Injuries, U.S. Department of Labor, Bureau of Labor Statistics*.

### The majority of victims of workplace homicide from 2005 through 2009 were male and middle-aged

Males accounted for 4 in 5 victims of workplace homicide (table 15). From 2005 through 2009, about 48% of all workplace homicide victims were between the ages of 35 and 54, about 21% were ages 55 or older, and about 10% were ages 16 to 24. Whites accounted for about half of all workplace homicide victims while blacks represented about a fifth of all victims. In comparison, Hispanics accounted for 16% of all workplace homicide victims; Asians accounted for 11%.

**TABLE 15**  
Workplace homicide victims, by sex, age, race/Hispanic origin, 2005–2009

Victim characteristic	Percent of workplace homicide victims age 16 or older
<b>Total</b>	100.0%
<b>Sex</b>	
Male	81.6%
Female	18.4
<b>Age</b>	
16-19 years old	2.2%
20-24	7.4
25-34	21.0
35-44	25.4
45-54	22.6
55-64	14.8
65 or older	6.3
<b>Race/Hispanic origin</b>	
White <sup>a</sup>	48.9%
Black/African American <sup>a</sup>	21.7
Hispanic/Latino <sup>b</sup>	16.2
American Indian <sup>a</sup>	0.4*
Asian/Pacific Islander <sup>a</sup>	11.2
Two or more races <sup>a</sup>	0.1*
Other or race not reported	1.3

Note: Includes 2009 preliminary data. Details do not sum to total due to rounding. See *Methodology*.

<sup>a</sup>Based on 10 or fewer cases.

<sup>b</sup>Excludes persons of Hispanic or Latino origin.

<sup>c</sup>Includes all racial groups.

Source: *Census of Fatal Occupational Injuries, U.S. Department of Labor, Bureau of Labor Statistics*.

## Robbers and other assailants accounted for the majority of workplace homicide offenders

From 2005 through 2009, about 38% of workplace homicide offenders were robbers (table 16). Work associates accounted for about a fifth, and customers and clients represented about 10% of all workplace homicide offenders. Current and former coworkers committed 11% of workplace homicides. Spouses constituted about 3% of offenders in workplace homicides.

## Most workplace homicides resulted from shootings

Shootings accounted for about 80% of workplace homicides from 2005 through 2009 (table 17). About 14% of workplace homicides resulted from stabbings, hittings, kickings, or beatings.

**TABLE 16**  
**Workplace homicides, by offender type, 2005–2009**

Offender type	Percent of workplace homicide victims age 16 or older
<b>Total</b>	100.0%
<b>Robbers and other assailants</b>	70.3%
Robbers	38.3
Other assailants	32.0
<b>Work associates</b>	21.4%
Co-worker, former coworker	11.4
Customer, client	10.0
<b>Relatives</b>	4.0%
Spouse	2.9
Other relatives	0.8
<b>Other personal acquaintances</b>	4.3%
Current or former boyfriend or girlfriend	2.0
Other acquaintances	2.3

Note: Excludes strangers or assailants who were unknown. Includes 2009 preliminary data. Details do not sum to total due to rounding. See *Methodology*.  
Source: *Census of Fatal Occupational Injuries, U.S. Department of Labor, Bureau of Labor Statistics*.

**TABLE 17**  
**Workplace homicides, by incident type, 2005–2009**

Incident type	Percent of workplace homicide victims age 16 or older
<b>Total</b>	100.0%
Hitting, kicking, beating	6.1
Shooting	80.0
Stabbing	8.1
Unknown	5.8

Note: Includes 2009 preliminary data. Unknown category includes homicides not elsewhere classified and homicides with unspecified types. See *Methodology*.  
Source: *Census of Fatal Occupational Injuries, U.S. Department of Labor, Bureau of Labor Statistics*.

## Methodology

### Data sources

This report presents data on rape, sexual assault, robbery, aggravated assault, and simple assault against persons age 16 or older while they were at work or on duty as measured by the National Crime Victimization Survey (NCVS). The NCVS gathers data on crimes against persons age 12 or older, reported and not reported to the police, from a nationally representative sample of U.S. households. The NCVS provides information about victims (e.g. age, gender, race, Hispanic origin, marital status, income, and educational level), offenders (e.g., gender, race, approximate age, and victim/offender relationship), and the nature of the crime (time and place of occurrence, use of weapons, nature of injury, and economic consequences). Respondents to the NCVS age 16 or older are asked to select one occupation that best describes their job. More information on the National Crime Victimization Survey can be found here: <http://bjs.ojp.usdoj.gov/index.cfm?ty=dcdetail&iid=245>.

Data on workplace homicide were obtained from the Census of Fatal Occupational Injuries (CFOI), collected by the Bureau of Labor Statistics (BLS). Workplace homicide information for 2009 is based on preliminary data. Data for 1993–2008 are based on final data from the CFOI. As reported on the BLS website, CFOI produces comprehensive, accurate, and timely counts of fatal work injuries. CFOI is a federal-state cooperative program that has been implemented in all 50 States and the District of Columbia since 1992.

To compile counts that are as complete as possible, the census uses multiple sources to identify, verify, and profile fatal worker injuries annually. Information about each workplace fatal injury from all workplaces—occupation and other worker characteristics, equipment involved, and circumstances of the event—is obtained by cross referencing the source records, such as death certificates, workers' compensation reports, and federal and state agency administrative reports. To ensure that fatal injuries are work-related, cases are substantiated with two or more independent source documents, or a source document and a follow-up questionnaire. Data compiled by the CFOI program are issued annually for the preceding calendar year. The National Safety Council has adopted the Census of Fatal Occupational Injuries figure, beginning with the 1992 data year, as the authoritative count for work related deaths in the United States. More information about CFOI can be found here: <http://www.bls.gov/iif/oshfat1.htm>.



**Occupational categories in the National Crime Victimization Survey (NCVS) and Census of Fatal Occupational Injuries (CFOI)**

The National Crime Victimization Survey (NCVS) and the Census of Fatal Occupational Injuries (CFOI) use different systems of categorizing occupations of victims.

The NCVS began using the occupation categories displayed in this report after the 1992 redesign. In 2001, the employment questions were revised on the incident form using the Industry and Occupation coding of the 1990 Standard Industrial Classification (SIC) coding system. However, the screening questionnaire remained the same. In order to generate rates of workplace violence by occupation, the occupation categories on the incident form were collapsed into the occupation categories used on the screening questionnaire. Population estimates were generated from the screening questionnaire and incidents of workplace violence were generated using the collapsed categories from the incident form.

Beginning with the 2003 reference year, CFOI began using the 2002 North American Industry Classification System (NAICS) for industries, and the Standard Occupational Classification System (SOC) for occupations. Prior to 2003, the program used the Standard Industrial Classification (SIC) system and the Bureau of the Census occupational classification system. For more information, see [www.bls.gov/iif/osh\\_wtre02.htm](http://www.bls.gov/iif/osh_wtre02.htm). Due to the methodology of the NCVS involving victim interviews, it was impossible to obtain information on the occupations of workplace homicide victims. Therefore, CFOI was used to gain this information despite differing systems of classifying occupational categories.

**Methodological changes to the NCVS in 2006**

Methodological changes implemented in 2006 impacted the estimates for that year to an extent that the estimates were not comparable to those of previous years. An evaluation of 2007 and 2008 data from the NCVS conducted by BJS

and the Census Bureau found a high degree of confidence that estimates for 2007 and 2008 are consistent with and comparable to those for 2005 and previous years. For this reason, discussion of trends in the rates of crime in this report excludes the 2006 data.

Data from 2006 are included in tables displaying aggregate estimates because the effects from methodological changes implemented in 2006 did not impact the distributions across the variables describing the characteristics and consequences of crime. The effect on the 2006 estimates were on the levels and rates of crime, requiring omission from discussions of crime trends. Inclusion of 2006 data in tables providing aggregate estimates does not affect the comparisons presented in these tables.

**Standard error computations**

Comparisons of percentages and rates made in this report were tested to determine if observed differences were statistically significant. Differences described as higher, lower, or different passed a hypothesis test at the 0.05 level of statistical significance (95% confidence level). The tested difference was greater than twice the standard error of that difference. For comparisons that were statistically significant at the 0.10 level (90% confidence level), “somewhat,” “slightly,” or “marginally” is used to note the nature of the difference.

Significance testing calculations were conducted at the Bureau of Justice Statistics using statistical programs developed specifically for the NCVS by the U.S. Census Bureau. These programs take into consideration many aspects of the complex NCVS sample design when calculating estimates.

Standard errors for average annual estimates were calculated based on the ratio of the sums of victimizations and respondents across years. Estimates based on 10 or fewer sample cases have high relative standard errors. Care should be taken when comparing such estimates to other estimates when both are based on 10 or fewer sample cases.

**APPENDIX TABLE 1**

**Standard errors for workplace and nonworkplace violence and violence against persons not employed, by type of crime, 2005–2009**

Type of crime	Standard error of the rates			Standard error of the percents		
	Workplace <sup>a</sup>	Nonworkplace <sup>b</sup>	Not employed <sup>c</sup>	Workplace <sup>a</sup>	Nonworkplace <sup>b</sup>	Not employed <sup>c</sup>
Total	0.27	0.54	0.70	--	--	--
Serious violent crime	0.11	0.30	0.40	1.88	1.36	1.79
Rape/sexual assault	0.03	0.08	0.14	0.64	0.48	0.81
Robbery	0.04	0.17	0.22	0.74	0.92	1.19
Aggravated assault	0.10	0.21	0.27	1.68	1.09	1.41
Simple assault	0.23	0.40	0.53	1.96	1.39	1.82

Note: Serious violent crime includes rape/sexual assault, robbery, and aggravated assault. Standard errors were calculated using NCVS general variance parameters developed by the U.S. Census Bureau. These standard errors are for estimates in table 1. Includes 2006 data. See *Methodology*.

--Standard error less than 0.01.

<sup>a</sup>Workplace violence occurs against an employed person age 16 or older while at work or on duty.

<sup>b</sup>Nonworkplace violence occurs against an employed person age 16 or older while not at work or on duty.

<sup>c</sup>Violence against persons not employed occurs against a person age 16 or older who did not have a job the time of the crime.

Source: *National Crime Victimization Survey*.

**APPENDIX TABLE 2****Standard errors for workplace and nonworkplace violence, by occupation, 2005–2009**

Occupation	Standard error of the rates		Standard error of the percentages	
	Standard error of rate of workplace violence	Standard error of rate of nonworkplace violence	Percentage of workplace violence	Percentage of employed population age 16 or older
<b>Total</b>	0.27	0.54	--	--
<b>Medical</b>	0.91	1.43	1.34	0.15
Physician	4.06	3.54	0.44	0.03
Nurse	1.77	2.34	0.84	0.07
Technician	3.13	3.29	0.64	0.04
Other/medical occupations	0.93	2.13	0.72	0.10
<b>Mental health</b>	4.42	4.04	0.84	0.04
Professional	5.92	5.13	0.50	0.02
Custodial care	18.35	6.29	0.35	0.01
Other mental health occupations	6.37	6.95	0.56	0.03
<b>Teaching</b>	0.97	1.14	1.26	0.13
Preschool	1.21	4.05	0.13	0.03
Elementary	1.47	1.54	0.51	0.06
Jr. high/middle	3.19	2.42	0.48	0.04
High school	3.55	2.61	0.68	0.04
College/university	0.96	2.70	0.35	0.06
Technical /industrial school	26.88	--	0.35	0.01
Special education facility	9.97	6.67	0.29	0.02
Other teaching occupations	3.02	3.43	0.53	0.04
<b>Law enforcement</b>	4.90	2.56	1.76	0.06
Law enforcement officer	10.95	2.28	1.27	0.03
Corrections	10.23	6.41	0.56	0.02
Security guard	11.53	6.88	1.00	0.03
Other law enforcement occupations	4.77	4.65	0.65	0.03
<b>Retail sales</b>	0.96	1.80	1.51	0.15
Convenience or liquor store clerk	3.49	6.63	0.35	0.03
Gas station attendant	14.12	13.09	0.37	0.01
Bartender	23.49	16.55	0.58	0.01
Other retail sales occupations	0.90	1.85	1.31	0.15
<b>Transportation</b>	1.97	2.03	1.15	0.08
Bus driver	5.17	2.86	0.32	0.02
Taxi cab driver	9.04	17.36	0.18	0.01
Other transportation occupations	2.15	2.22	1.08	0.07
<b>Other/unspecified</b>	0.22	0.63	2.23	0.32

Note: The National Crime Victimization Survey and Census of Fatal Occupational Injuries use different categories of occupations. Standard errors were calculated using NCVS general variance parameters developed by the U.S. Census Bureau. These standard errors are for estimates in table 2. Includes 2006 data. See *Methodology*.

--Standard error less than 0.01.

Source: *National Crime Victimization Survey*.



**APPENDIX TABLE 3**

**Standard errors for rate of workplace and nonworkplace violence, by sex, race/Hispanic origin, age, marital status, and annual household income, 2005–2009**

Victim characteristic	Standard error of the rates	
	Workplace	Nonworkplace
Total	0.27	0.54
<b>Sex</b>		
Male	0.38	0.70
Female	0.33	0.71
<b>Race/Hispanic origin</b>		
White <sup>a</sup>	0.33	0.59
Black/African American <sup>a</sup>	0.62	1.49
Hispanic/Latino <sup>b</sup>	0.47	1.27
American Indian <sup>a</sup>	4.82	7.84
Asian/Pacific Islander <sup>a</sup>	0.88	1.35
Two or more races <sup>a</sup>	2.93	8.31
<b>Age</b>		
16-19 years old	0.80	3.33
20-24	0.85	2.10
25-34	0.60	1.09
35-49	0.40	0.69
50-64	0.42	0.60
65 or older	0.64	0.86
<b>Marital status</b>		
Never married	0.50	1.23
Married	0.31	0.42
Widowed	1.60	1.96
Divorced or separated	0.73	1.70
<b>Annual household income</b>		
Less than \$7,500	1.17	5.54
\$7,500 to \$14,999	1.50	3.69
\$15,000 to \$24,999	0.98	2.14
\$25,000 to \$34,999	0.81	1.81
\$35,000 to \$49,999	0.64	1.29
\$50,000 to \$74,999	0.69	0.91
\$75,000 or more	0.42	0.67
Unknown	0.44	2.53

Note: Standard errors were calculated using NCVS general variance parameters developed by the U.S. Census Bureau. These standard errors are for estimates in table 3. Includes 2006 data. See *Methodology*.

<sup>a</sup>Excludes persons of Hispanic or Latino origin.

<sup>b</sup>Includes all racial groups.

Source: *National Crime Victimization Survey*.

**APPENDIX TABLE 4**

**Standard errors for percentage of workplace and nonworkplace violence and employed persons, by sex, race/Hispanic origin, age, marital status, and annual household income, 2005–2009**

Victim characteristic	Standard error of the percent		
	Workplace	Nonworkplace	Employed persons age 16 or older
Total	--	--	--
<b>Sex</b>			
Male	2.26	1.41	0.33
Female	2.22	1.39	0.33
<b>Race/Hispanic origin</b>			
White <sup>a</sup>	1.96	1.36	0.32
Black/African American <sup>a</sup>	1.24	0.90	0.17
Hispanic/Latino <sup>b</sup>	1.17	0.94	0.19
American Indian <sup>a</sup>	0.48	0.24	0.03
Asian/Pacific Islander <sup>a</sup>	0.74	0.36	0.10
Two or more races <sup>a</sup>	0.47	0.42	0.04
<b>Age</b>			
16-19 years old	0.73	0.91	0.10
20-24	1.53	1.12	0.16
25-34	2.08	1.19	0.25
35-49	2.17	1.21	0.31
50-64	1.76	0.82	0.26
65 or older	0.48	0.20	0.09
<b>Marital status</b>			
Never married	2.19	1.41	0.28
Married	2.32	1.18	0.34
Widowed	0.57	0.23	0.06
Divorced or separated	1.64	1.13	0.19
<b>Annual household income</b>			
Less than \$7,500	0.42	0.62	0.06
\$7,500 to \$14,999	0.89	0.68	0.08
\$15,000 to \$24,999	1.18	0.79	0.12
\$25,000 to \$34,999	1.21	0.83	0.14
\$35,000 to \$49,999	1.45	0.90	0.18
\$50,000 to \$74,999	1.89	0.84	0.21
\$75,000 or more	1.92	0.99	0.28
Unknown	1.83	1.15	0.26

Note: Standard errors were calculated using NCVS general variance parameters developed by the U.S. Census Bureau. These standard errors are for estimates in table 4. Includes 2006 data. See *Methodology*.

--Standard error less than 0.01.

<sup>a</sup>Excludes persons of Hispanic or Latino origin.

<sup>b</sup>Includes all racial groups.

Source: *National Crime Victimization Survey*.

**APPENDIX TABLE 5****Standard errors for victim/offender relationship for victims of workplace violence, by sex, 2005-2009**

Victim/offender relationship	Standard error of the percent	
	Male	Female
Total	--	--
Intimate partner	0.48	0.90
Other relatives	0.42	0.57
Well-known/casual acquaintances	1.82	2.83
Work relationships	2.52	3.40
Customer/client	1.07	1.74
Patient	0.66	1.68
Current or former—		
Supervisor	0.59	1.25
Employee	0.88	0.90
Co-worker	2.11	2.51
Do not know relationship	1.57	1.69
Stranger	2.94	3.61

Note: Standard errors were calculated using NCVS general variance parameters developed by the U.S. Census Bureau. These standard errors are for estimates in table 5. Includes 2006 data. See *Methodology*.

--Standard error less than 0.01.

Source: *National Crime Victimization Survey*.

**APPENDIX TABLE 6****Standard errors for victim resistance for workplace and nonworkplace violence, 2005-2009**

Resistance type	Standard error of the percent	
	Workplace	Nonworkplace
Total	--	--
No resistance	2.26	1.33
Resisted	2.29	1.37
Threatened/attacked with a firearm	0.50	0.20
Threatened/attacked with other weapon	0.40	0.25
Threatened/attacked without a weapon	1.74	1.20
Nonconfrontational tactics-yelling, running, argued with offender	2.08	1.29
Other reaction	1.36	0.54

Note: Excludes incidents in which the reaction was unknown. Standard errors were calculated using NCVS general variance parameters developed by the U.S. Census Bureau. These standard errors are for estimates in table 6. Includes 2006 data. See *Methodology*.

--Standard error less than 0.01.

Source: *National Crime Victimization Survey*.

**APPENDIX TABLE 7****Standard errors for perceived offender drug/alcohol use in workplace and nonworkplace violence, 2005-2009**

Offender drug/alcohol use	Standard error of the percent	
	Workplace	Nonworkplace
Total	--	--
Perceived to be using drugs or alcohol	2.05	1.38
Not using drugs or alcohol	2.36	1.15
Do not know	2.31	1.42

Note: Standard errors were calculated using NCVS general variance parameters developed by the U.S. Census Bureau. These standard errors are for estimates in table 7. Includes 2006 data. See *Methodology*.

--Standard error less than 0.01.

Source: *National Crime Victimization Survey*.

**APPENDIX TABLE 8****Standard errors for weapons presented by offender, workplace violence and nonworkplace violence, 2005-2009**

Weapon type	Standard error of the percent	
	Workplace	Nonworkplace
Total	--	--
No weapon	1.97	1.36
Weapon	1.74	1.21
Firearm	0.96	0.80
Knife	0.96	0.64
Other weapon	1.12	0.69
Unknown weapon type	0.42	0.31
Did not know if offender had weapon	0.87	0.70

Note: Standard errors were calculated using NCVS general variance parameters developed by the U.S. Census Bureau. These standard errors are for estimates in table 8. Includes 2006 data. See *Methodology*.

--Standard error less than 0.01.

Source: *National Crime Victimization Survey*.

**APPENDIX TABLE 9****Standard errors for injury and treatment for victims of workplace and nonworkplace violence, 2005–2009**

Injury/treatment	Standard error of the percent	
	Workplace	Nonworkplace
Total	--	--
Not injured	1.61	1.30
Injured	1.51	1.24
Not treated	1.12	1.00
Treated	1.06	0.85
Do not know	--	0.07

Note: Standard errors were calculated using NCVS general variance parameters developed by the U.S. Census Bureau. These standard errors are for estimates in table 9. Includes 2006 data. See *Methodology*.

-- Standard error less than 0.01.

Source: *National Crime Victimization Survey*.

**APPENDIX TABLE 10****Standard errors for injury type, workplace and nonworkplace violence, 2005–2009**

Injury type	Standard error of the percent	
	Workplace	Nonworkplace
Total	--	--
No injury	1.61	1.30
Serious injury	0.56	0.52
Minor injury	1.40	1.15
Rape without other injuries	0.13	0.25
Do not know	0.13	0.10

Note: Rape with other injuries was classified as either serious injury or minor injury. Standard errors were calculated using NCVS general variance parameters developed by the U.S. Census Bureau. These standard errors are for estimates in table 10. Includes 2006 data. See *Methodology*.

-- Standard error less than 0.01.

Source: *National Crime Victimization Survey*.

**APPENDIX TABLE 11****Standard errors for workplace and nonworkplace violence reported to police, by sex, race/Hispanic origin, age, and type of crime, 2005–2009**

Victim characteristic	Standard error of the percent	
	Workplace	Nonworkplace
Total	2.34	1.42
Sex		
Male	2.90	1.80
Female	3.63	2.01
Race		
White <sup>a</sup>	2.63	1.69
Black/African American <sup>a</sup>	7.26	3.37
Hispanic/Latino <sup>b</sup>	7.19	3.26
American Indian/Alaska Native <sup>a</sup>	17.87	11.11
Asian/Pacific Islander <sup>a</sup>	11.67	7.92
Two or more races <sup>a</sup>	17.68	6.75
Age		
16-19 years old	10.81	3.29
20-24	5.67	2.73
25-34	4.09	2.54
35-49	3.80	2.47
50-64	5.02	3.75
65 or older	17.79	12.66
Type of crime		
Serious violent crime <sup>c</sup>	4.53	2.11
Rape/sexual assault	13.49	5.90
Robbery	10.00	3.29
Aggravated assault	5.17	2.74
Simple assault	2.59	1.73

Note: Standard errors were calculated using NCVS general variance parameters developed by the U.S. Census Bureau. These standard errors are for estimates in table 11. Includes 2006 data. See *Methodology*.

<sup>a</sup>Excludes persons of Hispanic or Latino origin.

<sup>b</sup>Includes all racial groups.

<sup>c</sup>Serious violent crime consists of rape/sexual assault, robbery and aggravated assault and excludes simple assault.

Source: *National Crime Victimization Survey*.

**APPENDIX TABLE 12****Standard errors for reasons for reporting incident to police other than incident was a crime, by workplace and nonworkplace violence, 2005–2009**

Reason reported	Standard error of the percentages	
	Workplace	Nonworkplace
<b>Personal reasons</b>		
Stop or prevent this incident from happening	4.12	2.21
Needed help or injured	1.44	0.81
Recover property	1.65	0.94
Collect insurance	0.53	0.36
Prevent future incidents against respondents	3.57	2.05
<b>Public safety reasons</b>		
Stop this offender from committing other crimes against anyone	3.53	1.47
Punish offender	2.63	1.38
Catch offender	1.83	1.16
Improve police surveillance	1.58	0.94
Duty to let police know about crime	3.02	1.08
<b>Other</b>	2.55	0.87
<b>No other reason</b>	4.04	1.80

Note: Standard errors were calculated using NCVS general variance parameters developed by the U.S. Census Bureau. These standard errors are for estimates in table 12. Includes 2006 data. See *Methodology*.

Source: *National Crime Victimization Survey*.

**APPENDIX TABLE 13****Standard errors for reasons for not reporting crime to police, by workplace and nonworkplace violence, 2005–2009**

Reason not reported	Standard error of the percentages	
	Workplace	Nonworkplace
Reported to another official	3.01	0.89
Personal matter	2.55	1.65
Not important enough	2.61	1.65
No insurance	0.26	0.18
Found out too late	0.36	0.21
Cannot recover property	--	0.15
Lack of proof	0.88	0.82
Police would not help	1.68	1.44
Protect offender	1.00	0.99
Advised not to report	0.41	0.24
Fear of reprisal	1.13	0.87
Too inconvenient	0.84	0.97
Other reason	2.09	1.21
Does not know	0.31	0.30

Note: Standard errors were calculated using NCVS general variance parameters developed by the U.S. Census Bureau. These standard errors are for estimates in table 13. Includes 2006 data. See *Methodology*.

--Standard error less than 0.01.

Source: *National Crime Victimization Survey*.

U.S. Department of Justice  
Office of Justice Programs  
Bureau of Justice Statistics

Washington, DC 20531

Official Business  
Penalty for Private Use \$300



PRESORTED STANDARD  
POSTAGE & FEES PAID  
DOJ/BSJ  
Permit No. G-91

Office of Justice Programs • Innovation • Partnerships • Safer Neighborhoods • <http://www.bjs.gov>

The Bureau of Justice Statistics is the statistical agency of the U.S. Department of Justice. James P. Lynch is the director.

This Special report was written by Erika Harrell, Ph.D. Lynn Langton verified the report.

Doris J. James and Vanessa Curto edited the report, Tina Dorsey produced the report, and Jayne Robinson prepared the report for final printing, under the supervision of Doris J. James.

March 2011, NCJ 233231

This report in portable document format and in ASCII and its related statistical data and tables are available at the website: <http://www.bjs.gov/index.cfm?ty=pbdetail&iid=2377>.