



Cornell University
ILR School

Cornell University ILR School
DigitalCommons@ILR

Labor Dynamics Institute

Centers, Institutes, Programs

8-2017

Sorting Between and Within Industries: A Testable Model of Assortative Matching

John M. Abowd

Cornell University, John.Abowd@cornell.edu

Francis Kramarz

Crest (ENSAE)

Sebastien Perez-Duarte

European Central Bank

Ian M. Schmutte

University of Georgia, schmutte@uga.edu

Follow this and additional works at: <http://digitalcommons.ilr.cornell.edu/ldi>



Part of the [Social Statistics Commons](#)

Thank you for downloading an article from DigitalCommons@ILR.

Support this valuable resource today!

This Article is brought to you for free and open access by the Centers, Institutes, Programs at DigitalCommons@ILR. It has been accepted for inclusion in Labor Dynamics Institute by an authorized administrator of DigitalCommons@ILR. For more information, please contact hlmdigital@cornell.edu.

Sorting Between and Within Industries: A Testable Model of Assortative Matching

Abstract

We test Shimer's (2005) theory of the sorting of workers between and within industrial sectors based on directed search with coordination frictions, deliberately maintaining its static general equilibrium framework. We fit the model to sector-specific wage, vacancy and output data, including publicly-available statistics that characterize the distribution of worker and employer wage heterogeneity across sectors. Our empirical method is general and can be applied to a broad class of assignment models. The results indicate that industries are the loci of sorting--more productive workers are employed in more productive industries. The evidence confirms that strong assortative matching can be present even when worker and employer components of wage heterogeneity are weakly correlated.

Disciplines

Social Statistics

Comments

Forthcoming *Annals of Economics and Statistics* (2018).

An earlier version of this paper can be found here: <http://digitalcommons.ilr.cornell.edu/ldi/21/>. This paper was previously released in July 2014; the current version is more recent.

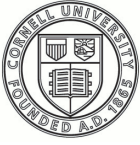
Replication code can be found at <https://doi.org/10.3886/E100830V1> and at our Github repository at <https://github.com/labordynamicsinstitute/endogenous-mobility-replication>.

Any opinions and conclusions expressed herein are those of the authors and do not necessarily represent the views of the U.S. Census Bureau.

All results have been reviewed to ensure that no confidential information is disclosed. This research uses data from the Census Bureau's Longitudinal Employer Household Dynamics Program, which was partially supported by the following National Science Foundation Grants SES-9978093, SES-0339191 and ITR-0427889; National Institute on Aging Grant AG018854; and grants from the Alfred P. Sloan Foundation. Abowd also acknowledges direct support from NSF Grants SES-0339191, CNS-0627680, SES-0922005, TC-1012593, and SES-1131848.

For helpful comments, we thank John Eltinge and seminar participants at Duke University, Louisiana State University, the University of Virginia, SOLE 2015, and AEA 2017. All remaining errors are our own.

The data used in this paper were derived from confidential data produced by the LEHD Program at the U.S. Census Bureau. All estimation was performed on public-use versions of these data, which are permanently archived with OpenICPSR and available via <https://doi.org/10.3886/E100830V1>.



Cornell University
ILR School

Cornell University ILR School
DigitalCommons@ILR

Labor Dynamics Institute

Centers, Institutes, Programs

July 2014

Sorting between and within Industries: A Testable Model of Assortative Matching

John M. Abowd

Cornell University, jma7@cornell.edu

Francis Kramarz

Crest (ENSAE), francis.kramarz@ensae.fr

Sebastien Perez-Duarte

European Central Bank, sebastien.perez-duarte@ecb.europa.eu

Ian M. Schmutte

University of Georgia, schmutte@uga.edu

Follow this and additional works at: <http://digitalcommons.ilr.cornell.edu/ldi>

Thank you for downloading an article from DigitalCommons@ILR.

Support this valuable resource today!

This Article is brought to you for free and open access by the Centers, Institutes, Programs at DigitalCommons@ILR. It has been accepted for inclusion in Labor Dynamics Institute by an authorized administrator of DigitalCommons@ILR. For more information, please contact hlmdigital@cornell.edu.

Sorting between and within Industries: A Testable Model of Assortative Matching

Abstract

We test Shimer's (2005) theory of the sorting of workers between and within industrial sectors based on directed search with coordination frictions, deliberately maintaining its static general equilibrium framework. We fit the model to sector-specific wage, vacancy and output data, including publicly-available statistics that characterize the distribution of worker and employer wage heterogeneity across sectors. Our empirical method is general and can be applied to a broad class of assignment models. The results indicate that industries are the loci of sorting-more productive workers are employed in more productive industries. The evidence confirms that strong assortative matching can be present even when worker and employer components of wage heterogeneity are weakly correlated.

Sorting Between and Within Industries: A Testable Model of Assortative Matching

John M. Abowd
Francis Kramarz
Sébastien Pérez-Duarte
Ian M. Schmutte

May 22, 2015

Any opinions and conclusions expressed herein are those of the authors and do not necessarily represent the views of the U.S. Census Bureau. All results have been reviewed to ensure that no confidential information is disclosed. This research uses data from the Census Bureau's Longitudinal Employer Household Dynamics Program, which was partially supported by the following National Science Foundation Grants SES-9978093, SES-0339191 and ITR-0427889; National Institute on Aging Grant AG018854; and grants from the Alfred P. Sloan Foundation. Abowd also acknowledges direct support from NSF Grants SES-0339191, CNS-0627680, SES-0922005, TC-1012593, and SES-1131848. We thank seminar participants at Duke University and the University of Virginia for helpful comments. All remaining errors are our own. The data used in this paper were derived from confidential data produced by the LEHD Program at the U.S. Census Bureau. All estimation was performed on public-use versions of these data available directly from <http://digitalcommons.ilr.cornell.edu/ldi/21>.

Abowd: Department of Economics, Cornell University, CES - U.S. Census Bureau, NBER, CREST, and IZA. Email: John.Abowd@cornell.edu

Kramarz: CREST (ENSAE). Email: francis.kramarz@ensae.fr

Pérez-Duarte: European Central Bank. Email: Sebastien.Perez-Duarte@ecb.europa.eu

Schmutte: Department of Economics, Terry College of Business, University of Georgia. Email: schmutte@uga.edu.

Abstract

We test Shimer's (2005) theory of the sorting of workers between and within industrial sectors based on directed search with coordination frictions, deliberately maintaining its static general equilibrium framework. We fit the model to sector-specific wage, vacancy and output data, including publicly-available statistics that characterize the distribution of worker and employer wage heterogeneity across sectors. Our empirical method is general and can be applied to a broad class of assignment models. The results indicate that industries are the loci of sorting—more productive workers are employed in more productive industries. The evidence confirms that strong assortative matching can be present even when worker and employer components of wage heterogeneity are weakly correlated.

1 Introduction

Since Sumner Slichter (1950) provided the first empirical evidence of the divergence between wages and measured productivity across industrial sectors, economists have generated repeated empirical confirmations of this phenomenon. Observationally identical workers employed by observationally identical employers earn systematically different wages. These earnings differences are strongly correlated with industrial sector and persistent over time.¹ Nearly forty years later, Richard Thaler (1989) summarized the prevailing empirical evidence and theories, concluding that none of the available models could explain persistent interindustry wage differences. Subsequently, the creation of longitudinally linked employer-employee data coupled with the ability to perform high-dimensional statistical decompositions of these data transformed the empirical foundations of this literature by documenting two statistical regularities across a many different data sources. First, observed wages have substantial variation due to the unmeasured individual and employer components. Second, the correlation between worker and employer heterogeneity is empirically small and usually positive.² We will follow the economics literature in referring to this wage decomposition, introduced in Abowd et al. (1999), as the “AKM decomposition.”

Following the publication of statistical evidence that wage outcomes displayed unobservable heterogeneity in both employer and worker dimensions, two strands of theoretical models, specifically built to accommodate these empirical regularities, emerged. The first, best summarized by Mortensen (2003), explains these facts using a model with search frictions where labor market matching is essentially random. The second, best summarized by Shimer (2005), explains them with a model in which workers with varying levels of ability are sorted to employers on the basis of job-specific productive assets. Although Shimer’s 2005 model has been extensively cited as providing a theoretical basis for assortative matching that is consistent with the facts from longitudinally matched employer-employee data, it has never been empirically tested.

¹See Abowd, Kramarz, Lengermann, McKinney and Roux (2012) for an up-to-date summary.

²For example, see Abowd et al. (1999) for France, Abowd et al. (2003); Woodcock (2008) for the United States, Mortensen (2003) for Denmark, Iranzo et al. (2008); Bartolucci and Devicienti (2012) for Italy, Card, Heining and Kline (2013) for Germany, and Card, Cardoso and Kline (2013) for Portugal.

1.1 A Direct Test of the Coordination Friction Model of Assortative Matching

In this paper, we directly implement a test of Shimer’s model that also addresses the most serious criticisms that have been raised by other theorists, specifically the critique of Eeckhout and Kircher (2011). We maintain Shimer’s exact static general equilibrium framework. The phenomenon under study – inter-industry wage differential – characterizes the cross-sectional data in many labor markets and is persistent over time. While dynamic models like those of Hagedorn et al. (2012) have many salient features, most of those features are not needed to explain the between-sector variation in wage rates, and no model to date successfully captures all the empirical features of matched data. Shimer’s model deserves to be assessed directly on the labor market data that it was designed to explain.

Many models predict that more skilled workers should sort into more productive firms. However, the negligible correlation between unobserved worker- and firm-specific components of earnings in matched employer-employee data seems to be at odds with a labor market characterized by strong assortative matching. As shown by Eeckhout and Kircher (2011), earnings data are not sufficient to identify sorting on unobserved productivity. To reduce the need for ancillary assumptions when implementing Shimer’s model and to acknowledge the Eeckhout and Kircher critique, we use data on multiple outcomes: earnings, value-added, vacancies, and employment, all of which have direct analogues in Shimer’s model, to demonstrate that positive assortative matching across sectors is a prominent phenomenon in the U.S. labor market.

Taking Shimer’s model of coordination frictions as the stationary general equilibrium description of the market, we show that unobservable differences in worker productivity are strongly positively correlated with unobservable differences in firm productivity across sectors. However, unobservable differences in workers’ earnings are only weakly correlated with unobservable firm differences in earnings – exactly as the coordination friction model predicts.

The current literature’s focus on the aggregate correlation between worker and employer components of earnings heterogeneity ignores considerable variation in pay within and across industrial sectors. In contrast to the negligible aggregate correlations, Abowd, Kramarz, Lengermann, McKinney and Roux (2012) find a strong positive relationship between the industry-average person effect and the industry-average employer effect of 0.54 (see their Table 3). The strong between-sector correlation suggests that different kinds of workers sort

into particular industries, and are compensated differently there, just as Slichter observed in 1950 and Thaler summarized in 1989.

The different patterns of between- and within-sector variation in pay raise the question of whether the process that matches workers to particular sectors is the same process that matches them to jobs within sectors. Variation in wage heterogeneity, output, and employment across sectors can facilitate estimation and identification of sorting on the basis of unobservable productive traits. But the factors that drive sorting within industries may differ from the factors that drive sorting between industries. In our test of Shimer’s model, we focus on whether the data can be explained by a model in which sorting across and within sectors is driven by variation in the productive characteristics of workers and their employers.

Our main substantive contribution is the direct test of Shimer’s 2005 model, which also directly connects the literature on labor market sorting with that on inter-industry wage differentials. We show that in the U.S. labor market sorting of the form described by Shimer is an important determinant of these differences. Estimation requires longitudinally linked employer-employee data with sufficient connectivity; however, Shimer’s model is static. We therefore assume that the data generating process is a repeated sample from the equilibrium of his coordination friction economy. Eeckhout and Kircher (2011) make similar assumptions. Shimer (2005, p. 1019) asserts that “...the model must be extended to a dynamic framework if it is to be taken quantitatively seriously.” Our approach demonstrates that this need not be the case. If the static model provides a good description of the distribution from which observed matches are sampled in the longitudinal data, then our estimation strategy is valid. A dynamic model is not required to complete the connection between the stylized facts, the model, and the data. We push Shimer’s model by considering its ability to explain the observed pattern of earnings between and within sectors. We expect future work will – and should – extend the coordination-friction model theoretically and empirically to incorporate both dynamics and different forms of heterogeneity in assignment and production technologies. However, these extensions are not necessary for the validity or significance of our results.

The reduced-form evidence on inter-industry differentials, comprehensively summarized in Abowd, Kramarz, Lengermann, McKinney and Roux (2012), has evolved by progressively accounting for new sources of observable and unobservable heterogeneity. The early research on sorting was focused, by necessity, on considering only sorting across industries. Our results suggest that it was right to do so. We find that industries are the loci of sorting –

more productive workers are employed in more productive industries – thereby providing a new perspective on both literatures. Consistent with Shimer’s conjectures, the small correlation between person- and firm- effects in the AKM decomposition understates the true extent of assortative matching. Furthermore, the model explains between-sector variation in the observable productivity and wage data very well. However, the model has a mixed performance in fitting within-sector variation in earnings heterogeneity. The model correctly predicts the variation in worker-specific earnings heterogeneity, but it tends to under-predict within-sector variation in employer earnings heterogeneity. It also tends to predict counter-factually large, positive within-sector correlation between worker and employer effects.

To obtain our results, we make two methodological contributions. First, we develop a new method to estimate the coordination friction model that is applicable to a broader class of assignment models. Although the AKM decomposition is not a structural wage equation (except under certain restrictive assumptions), it does contain useful information on equilibrium matching and productivity. We derive a closed-form expression that relates the observed distribution of worker and employer earnings components from AKM to the Shimer model primitives. These expressions are also valid in any assignment model with heterogeneous workers and employers that has: (1) a wage offer function that depends only on the type of worker and the type of firm; (2) a prediction on the set of employment relationships that are realized. We estimate the model by the simulated method of moments. Since earnings data are not sufficient for identification, we also use data on sector-specific vacancy rates, value-added, and employment shares, in addition to summary measures from the AKM decomposition.

A second, complementary, contribution is to make available the complete set of data moments used in estimation. Doing so goes beyond standard best-practices regarding replication because the essential matched employer-employee microdata used in this paper are confidential. While access is open, in practice obtaining it can be quite time-consuming.³ Researchers studying labor market sorting can use our data and empirical strategy to estimate alternative models of assignment and matching. We are not aware of another publicly available source of comparably detailed summary data based on underlying matched employer-employee data. We describe the data in Section 4 and our empirical approach in Section 5.

³Our public-use data include moments of wage components from the AKM decomposition for twenty industrial sectors, stratified by firm size. In this paper, we do not use the employer size detail since Shimer (2005) does not make any predictions related to firm size.

1.2 Relation to the Earlier Literature

Our paper is also among the first to estimate a directed search model with two-sided heterogeneity, and the first to formally incorporate industrial sector heterogeneity. Unlike this paper, most recent efforts to estimate assignment models draw on Shimer and Smith (2000), extending Becker’s frictionless assignment model (Becker 1973). Becker’s model cannot match the firm-specific variation in wages observed in the data. Adding frictions changes the equilibrium so that it is more consistent with the reduced-form evidence from matched employer-employee data. Shimer and Smith (2000) extend Becker’s model by allowing for costly search, and establish conditions under which assortative matching still holds. In a separate model, the one we consider in detail here, Shimer (2005) introduces coordination frictions whereby workers and firms cannot perfectly coordinate on application strategies or wage posting. Both Shimer models predict that assortative matching depends on the production technology, and may be obscured in the correlation between worker and employer effects in the AKM decomposition.

Eeckhout and Kircher (2011) discuss the general problem of identifying sorting in assignment models based on Shimer and Smith (2000). In their setting, wages are not monotonic in firm productivity, so wage data cannot be used to rank firms. This critique does not directly apply to our paper, since wages are monotonically increasing in employer productivity in Shimer’s coordination friction model.⁴ However, a similar problem can arise because wages are non-monotonic in worker productivity. Indeed, this aspect of the model is prominent in our estimates. Recent papers by Hagedorn et al. (2012) and Lopes de Melo (2013) also directly confront the problem raised by Eeckhout and Kircher (2011). We view their contributions as complementary to ours.

There is very little published research that estimates structural assignment models, but there are several related working papers. Lopes de Melo (2013) estimates a model with two-sided heterogeneity and undirected search using matched employer-employee data from Brazil. His results indicate that the AKM decomposition understates the true extent of positive assortative matching. However, he finds that the undirected search model delivers too little earnings heterogeneity across employers. Lise et al. (2013) estimate a model with two-sided heterogeneity, undirected search, and wage renegotiation using data from NLSY79. They find that the data are best fit by a model in which productive complementarities vary across workers with different skill levels. Finally, Kennes and le Maire (2013) develop a

⁴See the discussion in Eeckhout and Kircher (2011, p.899) and the related Proposition 4 in Shimer (2005).

dynamic directed-search model, and show that it provides a better fit to aggregate wage and productivity distributions than a model without heterogeneity. None of these papers considers the problem of sorting across versus within industrial sectors.

Shimer (2005) and Eeckhout and Kircher (2011) observe, correctly, that the correlation between worker- and firm-specific components from the AKM decomposition cannot identify the nature of assortative matching on latent productive characteristics. This point was made earlier by Abowd and Kramarz (1999). Although it is frequently asserted (for example Hagedorn et al. 2012) that Abowd et al. (1999) interpret the correlation between person and firm effects as evidence against assortative matching, they were careful to avoid that explicit structural interpretation. The first discussion of using the estimated heterogeneity components to draw inferences about labor market sorting appears in Abowd and Kramarz (1999). Abowd and Kramarz derive a matching model with homogeneous workers (see Table 2), a rent splitting model (see Table 3), and an incentive model with unobserved heterogeneity (see Table 4). For each model they provide the exact link between the components of the AKM decomposition and the structural differences in individual and employer productivity. They also show that the model now known as exogenous mobility offers the only clean interpretation of the least squares AKM estimates as direct measures of assortative matching. Mortensen (2003, p.12) draws on the exogenous mobility interpretation when he cites the negligible correlation as evidence in support of a wage posting model with undirected, on-the-job search.

Although these models are much simpler than the one we employ, they clarify the role of the AKM decomposition as a statistical description of labor market outcomes to be used as one component of a full structural analysis.⁵ The recent literature, including this paper, attempts to reconcile the statistical evidence in light of more general structural assignment models. Nevertheless, objections to a particular structural interpretation do not imply objections to the reduced-form evidence provided by the AKM decomposition, which must be consistent with the predictions of the structural models since it represents the best statistical description of the actual data.⁶

⁵In their Section 5.5, Eeckhout and Kircher (2011) accurately criticize one set of assumptions on the assignment process previously used to interpret the least squares correlation as a measure of sorting.

⁶A related, but different literature, directly considers violations of the exogenous mobility assumption and, in particular, whether the firm effects in the AKM decomposition actually measure variation across firms in compensation. See, for example, Card, Heining and Kline (2013) and Abowd and Schmutte (2015).

2 Theoretical Assignment Model

In this section we summarize those features of the coordination friction model (Shimer 2005) required for our analysis: the equilibrium wage offers and matching sets. Shimer's model extends the frictionless assignment model of Becker (1973) in which workers with different ability apply for jobs with differently productive employers. Shimer's central insight is that in a large anonymous labor market, workers and employers cannot fully condition their behavior on that of all other agents. In other words, they are restricted in their ability to coordinate. In practice, this means employers post the same wage offers to all workers with the same ability (a strategy restriction), and all workers of the same type follow the same application strategy (an equilibrium refinement). The model predicts matching on the basis of comparative advantage, as in Becker (1973), but with more empirically realistic features: equilibrium mismatch and, consequently, wage variation across workers with the same ability.

2.1 Job Assignment with Coordination Frictions

The economy consists of workers, who maximize expected income, and employers, who maximize expected profit. Each employer has one vacancy to fill by hiring one worker. Employers propose wage offers for each worker. Workers then choose to apply for exactly one vacancy. Based on the pool of applicants, each employer hires one worker to fill its vacancy. Workers and employers only differ in productive type. There are M types of workers and N types of employers. When a worker of type m is hired by an employer of type n , the output of production is $x_{m,n}$.

A decentralized equilibrium of the coordination friction economy is characterized by a randomized application strategy by workers and wage offers from employers of a given productivity. The coordination friction implies that all agents of the same type use the same strategy in equilibrium. Equilibrium depends only on the nature of the production technology, the measure of each type of worker, and the measure of each type of employer. Out of a total measure μ of workers in the economy, μ_m have productive type $m \in \{1 \dots M\}$. Similarly, out of a total measure ν of employers in the economy, ν_n have productive type $n \in \{1 \dots N\}$. Although it will not matter in the final equilibrium, we follow Shimer in naming individual workers by (m, i) and individual employers by (n, j) , where the first term is the type of the agent, and the second term is the agent's name. Thus, each worker or employer can be uniquely identified.

2.2 Worker and Employer Behavior

Each worker can apply for only one job, and chooses an application strategy based on wage offers posted by employers. A type- m worker's strategy, $p_{m,(n,j)}$, specifies the probability with which she applies to each employer.

In the coordination friction economy, all workers of type m follow the same strategy. The number of workers of each type is very large, so it is easier to think in terms of the queue of applicants of type m to each employer. The number of applications from type m workers to employer (n, j) follows a Poisson distribution with expectation $q_{m,(n,j)} = p_{m,(n,j)}\mu_m$. Given wage offers, equilibrium queue lengths must provide all workers of type m the same expected income at jobs for which they apply with positive probability. A job for which a worker does not apply must offer strictly lower expected income. The expected income from any job, $y_{m,(n,j)}$, for which $q_{m,(n,j)} > 0$ is:

$$y_{m,(n,j)} = e^{-Q_{m+1,(n,j)}} \frac{1 - e^{-q_{m,(n,j)}}}{q_{m,(n,j)}} w_{m,(n,j)} \quad (1)$$

where $Q_{m+1,(n,j)} = \sum_{m'=m+1}^M q_{m',(n,j)}$ is the queue of workers for employer (n, j) with productive type at least $m + 1$; that is, the expected number of applications from workers who are strictly more productive than a worker of type m .

Employers choose wage offers for workers of each productive type and a hiring rule that maximizes expected profits, given the queuing behavior of workers. The type- n employer's optimal wage offer to a type- m employee maximizes net revenue times the probability that a worker of that type will apply. Shimer (2005) shows that the optimal hiring rule selects the applicant with highest ability. When following this rule, the expected profit of employer (n, j) is given by

$$\pi_{(n,j)} = \sum_{m=1}^M e^{-Q_{m+1,(n,j)}} [1 - e^{-q_{m,(n,j)}}] [x_{m,n} - w_{m,(n,j)}]. \quad (2)$$

2.3 Search Equilibrium

Definition 1 (Shimer 2005) A *Competitive Search Equilibrium* consists of wage offers, w , and queue lengths, q , chosen such that employer's expected profits (2) are maximized, worker's expected incomes are given by (1), and the expected number of applications from type m

workers does not exceed the total measure of such workers, μ_m :

$$\mu_m \geq \sum_{n=1}^N \int_0^{\nu_n} q_{m,(n,j)} dj = \sum_{n=1}^N q_{m,n} \nu_n. \quad (3)$$

The equality of the second and third terms in (3) arises because workers of the same type choose the same application strategy and firms of the same type make the same wage offers.

Shimer proves the competitive equilibrium exists and is unique. He also shows the equilibrium queue lengths, $q_{m,n}$, are those that would be chosen by a social planner seeking to maximize expected output, and who also faces coordination frictions. Letting ν_m be the multiplier on the resource constraint given by equation (3), the Lagrangian for the social planning problem is

$$\mathcal{L}(q, \nu) = \sum_{m=1}^M \left\{ \sum_{n=1}^N \nu_n [e^{-Q_{m+1,n}} (1 - e^{-q_{m,n}}) x_{m,n}] + \nu_m \left(\mu_m - \sum_{n=1}^N q_{m,n} \nu_n \right) \right\}. \quad (4)$$

The dependence on the individual's identity, i , and the employer's identity, j , are suppressed because in equilibrium they are not relevant. Given the optimal queue lengths, and the requirement that workers' expected incomes satisfy (1), the equilibrium wages are:

$$w_{m,n} = \frac{q_{m,n} e^{-q_{m,n}}}{1 - e^{-q_{m,n}}} \left[x_{m,n} - \sum_{m'=1}^{m-1} e^{-Q_{m'+1,n}} (1 - e^{-q_{m',n}}) x_{m',n} \right]. \quad (5)$$

2.4 Empirical Implications

Equations (4) and (5) provide all the information required for estimation. Given the production technology, $x_{m,n}$, and the measure of each type of employer and worker, equilibrium wages and queue lengths are uniquely determined. Although the equilibrium queue lengths are not observable, we can use them to derive the expected number of workers of type m that ultimately become employed by employers of type n :

$$\lambda_{m,n} = \nu_n e^{-Q_{m+1,n}} (1 - e^{-q_{m,n}}). \quad (6)$$

The coordination friction equilibrium has two properties that are essential to the estimation strategy. In equilibrium, the wage offer function violates the law of one price. Different jobs pay identically able workers different wages. That is, there is a structural employer effect

in the wage. Shimer shows that the wage offer will generally be increasing in the productive type of the employer. The equivalent result does not hold for workers, however. It is possible for an employer to offer workers with low ability a higher equilibrium wage than workers with higher ability. Therefore, it is possible to observe a negative correlation between worker and employer effects estimated from the empirical earnings decomposition even when there is positive assortative matching on the unobserved ability/productivity types.

Note, however, that the model does not generally imply that log earnings can be additively decomposed into the sum of a worker and firm effect. An additive wage offer model is not required for our estimation procedure. The worker and firm effects from the statistical decomposition of log earnings in a linear model are complicated transformations of the underlying productivities and abilities along with factors determining the supply of and demand for worker skill. As we show, Shimer's coordination friction model provides exact formulas for these transformations that we can identify because they restrict observable moments of the joint distribution of the estimated worker and firm effects from the earnings decomposition.

Shimer derives several results on assortative matching. First, Shimer's Proposition 3 shows that if the production function is supermodular and $Q_{m,n} > 0$, then $Q_{m,n}$ is strictly increasing in n , which is ordered from least to most productive employer. That is, the more able workers are increasingly in the applicant pool for the more productive employers. In addition, a more productive job is more likely to be filled, a worker is less likely to obtain a more productive job conditional on applying for it, and for all levels of worker productivity, the wage is increasing in the employer's productivity. These results hold for production technologies that exhibit comparative advantage for high-ability workers in high-productivity jobs. They also hold, as is well known, for a production technology that exhibits no comparative advantage, specifically, one in which output is multiplicative in the productive types of the worker and employer. A converse result holds when there is a comparative advantage for low-ability workers in high-productivity jobs. In that case, $Q_{m,n}$ is decreasing in n , so that the assortative matching again corresponds to comparative advantage. We estimate the structural model with a CES production function that is sufficiently flexible to allow for either positive or negative assortative matching.

On their own, these results do not distinguish the coordination friction economy, since the frictionless model also predicts that job assignment will be in accord with comparative advantage in production. However, the coordination friction model makes more reasonable predictions about equilibrium unemployment and vacancies, and predicts a certain amount

of mismatch, which eliminates the untenable “perfect correlation” prediction for worker and employer types generated by comparative advantage models without the coordination friction. Since workers apply to employers using a randomized mixed strategy, there is a positive probability that multiple workers will apply for the same job—leaving all but one unemployed. There is also a positive probability that no one will apply for any particular job, leaving it vacant. Therefore, there will be simultaneous unemployment and job vacancy for workers and employers of all types. Furthermore, even among employed workers and occupied vacancies (filled jobs), there will be mismatch because the particular set of matches realized in the economy could be improved, in the sense of increasing total output, by aligning assignments that are mismatches more closely with comparative advantage.

3 Empirical and Theoretical Earnings Decomposition

The novelty in our empirical approach is to formally relate the equilibrium quantities from the structural assignment model to heterogeneity components from the statistical decomposition of earnings associated with workers and employers. The worker and employer effects from the earnings decomposition are complicated transformations of the equilibrium quantities. So is the correlation between worker and employer effects across realized matches, as well as other moments of their observed joint distribution. We explicitly derive the map between structural equilibrium quantities and empirical moments used for estimation.

3.1 Empirical AKM Decomposition

Following Abowd et al. (1999), we decompose the logarithm of the real annualized full-time wage rate, $\ln w_{i,t}$ in each job as:

$$\ln w_{i,t} = h_{i,t}\beta + \theta_i + \psi_{J(i,t)} + \varepsilon_{i,t} \quad (7)$$

where $\ln w_{i,t}$ is the log wage of worker i at time t ; $h_{i,t}\beta$ is the worker’s labor market experience, and labor market attachment, interacted with sex; θ_i is the worker effect; $J(i, t)$ is the dominant employer of individual i at time t ; $\psi_{J(i,t)}$ is the employer effect. We follow the methods in Abowd et al. (2002) to obtain the full least squares solution and for identification of worker and employer effects (7).

3.2 Theoretical Wage Decomposition

The theoretical assignment model is a sample selection model. It characterizes potential outcomes, which are the wages offered by any employer to any worker, and the manner in which the job matches we observe, and their associated wages, are selected for observation from the set of all possible matches. The theoretical model, therefore, predicts the empirical moments, which are transformations of the equilibrium wage offers, w^* , and application queues, q^* , given the model primitives (μ, ν, x) . Given q^* , the model also predicts the expected number of realized matches of each type, λ^* . Starred quantities represent solutions to the coordination-friction general equilibrium described in Section 2.

Given the solution to the coordination friction problem, the statistical decomposition of the log wage, analogous to the AKM decomposition of equation (7), paid in a realized match between worker $i \in (0, \mu)$ and employer $j \in (0, \nu)$ is

$$\ln w_{i,j}^* = \theta_{(m,i)}^* + \psi_{(n,j)}^*. \quad (8)$$

because wage offers do not vary within job types, nor within worker types; hence, there are $M \times N$ distinct wage offers.⁷ The expected equilibrium worker and employer effects are the solution to the theoretical weighted least squares problem

$$\begin{aligned} (\hat{\theta}_1^*, \dots, \hat{\theta}_M^*, \hat{\psi}_1^*, \dots, \hat{\psi}_N^*) = & \quad (9) \\ \arg \min & \left[\sum_{m,n=1}^{M,N} \lambda_{m,n}^* (\ln w_{m,n}^* - \theta_m^* - \psi_n^*)^2 \right]. \end{aligned}$$

Under the model, the AKM cross-product matrix is random noise around a low-dimension kernel. The kernel is evident when we transform the least squares objective function (9) to matrix notation:

$$\begin{aligned} \sum_{m,n=1}^{M,N} \lambda_{m,n}^* (\ln w_{m,n}^* - \theta_m^* - \psi_n^*)^2 = & \quad (10) \\ (\ln w^* - D\theta^* - F\psi^*)^T \Lambda^* (\ln w^* - D\theta^* - F\psi^*). \end{aligned}$$

$\ln w^*$ is an $MN \times 1$ vector of equilibrium log wage offers. D is an $MN \times M$ design matrix of

⁷Here, and throughout, we suppress the intercept in the AKM decomposition, implying that the model is fit in deviations from the overall mean and that the average worker and firm effects are zero.

worker types. F is an $MN \times N$ design matrix of employer types. θ^* and ψ^* are conformable vectors of theoretical heterogeneity components associated with worker and employer type. Finally, $\Lambda^* = \text{diag}(\lambda^*)$ where $\lambda^* = [\lambda_{1,1}^*, \lambda_{1,2}^*, \dots, \lambda_{M,N}^*]^T$ is an $MN \times 1$ vector whose $\lambda_{m,n}^*$ element is the expected number of matches between workers of type m and employers of type n given the equilibrium queues. It follows that

$$\begin{bmatrix} \hat{\theta}^* \\ \hat{\psi}^* \end{bmatrix} = \begin{bmatrix} D^T \Lambda^* D & D^T \Lambda^* F \\ F^T \Lambda^* D & F^T \Lambda^* F \end{bmatrix}^{-1} \begin{bmatrix} D^T \\ F^T \end{bmatrix} \Lambda^* \ln w^*. \quad (11)$$

Equation (11) is a low-dimensional representation of the usual AKM least squares solution. It defines the equilibrium quantity $(\hat{\theta}^*, \hat{\psi}^*)^T$ as a transformation of λ^* and w^* , which characterizes equilibrium given model primitives. In the case of Shimer's model these are the distributions of workers and employers across productive types and the production technology: (μ, ν, x) . Our empirical strategy therefore requires a model that predicts equilibrium matching sets and wage offers, but does not specifically require Shimer's coordination friction model.⁸

3.2.1 Identification of $(\hat{\theta}^*, \hat{\psi}^*)$

The model worker and employer wage effects, $(\hat{\theta}^*, \hat{\psi}^*)$, are identified when the cross product matrix in equation (11) has full rank, implying that the g -inverse can be replaced by a regular inverse. This requires Λ^* to have full rank as well as standard identifying restrictions on D and F . Λ^* has full rank only if each type of worker is hired by every type of employer with positive probability.

For consistency with the empirical procedure applied to the LEHD data, we implement identification in the theoretical decomposition by setting the mean overall worker and employer effects to zero across matches. We use the notation $(\hat{\theta}^*, \hat{\psi}^*)$ to refer to the components of earnings derived from (11). For estimation, we match moments of the joint distribution of $(\hat{\theta}^*, \hat{\psi}^*)$ across matches predicted under the model to their empirical counterparts.

4 Data and Estimating Equations

We use estimates of worker and employer effects from the AKM decomposition (7) applied to LEHD data. For every employment match, in every year, we record the estimated worker

⁸Appendix C presents the case with a continuum of employer types.

effect, $\hat{\theta}_i$, and estimated employer effect, $\hat{\psi}_{J(i,t)}$, along with the NAICS sector to which the employer belongs. The result is a dataset, $(\hat{\theta}_i, \hat{\psi}_{J(i,t)}, s_{J(i,t)})_{i,t}$, where $s_{J(i,t)} \in \{1, \dots, 20\}$ records the sector.

Within each sector, s , we estimate eight empirical moments:⁹

- $\bar{g}_1^{(s)} = E(\hat{\theta}|s)$, the mean worker effect in sector s ;
- $\bar{g}_2^{(s)} = E(\hat{\psi}|s)$, the mean employer effect in s ;
- $\bar{g}_3^{(s)} = Var(\hat{\theta}|s)$, the variance of worker effects in s ;
- $\bar{g}_4^{(s)} = Cov(\hat{\theta}, \hat{\psi}|s)$, the covariance between worker and employer effects in s ;
- $\bar{g}_5^{(s)} = Var(\hat{\psi}|s)$, the variance of employer effects in s ;
- $\bar{g}_6^{(s)} = Z^{(s)}$, the share of matches in sector s ;
- $\bar{g}_7^{(s)} = R^{(s)}$, the rate of vacant job openings in s ;
- $\bar{g}_8^{(s)} = Y^{(s)}$, value-added per worker in s .

4.1 Data Sources

To compute moments $\bar{g}_1^{(s)}, \dots, \bar{g}_6^{(s)}$, we use matched employer-employee data from the Longitudinal Employer-Household Dynamics (LEHD) Program of the U.S. Census Bureau. The LEHD Program uses administrative data from state Unemployment Insurance wage records and ES-202/QCEW establishment reports that cover approximately 98 percent of all non-farm U.S. employment. Our estimation sample is based on a snapshot of the LEHD data infrastructure that includes information from twenty-eight states collected between 1990 and 2004.¹⁰ Appendix B provides a detailed description of the LEHD data.

Data on sectoral vacancy rates, $\bar{g}_7^{(s)} = R^{(s)}$, are from the Job Openings and Labor Turnover Survey (JOLTS). The sectoral vacancy rates are reported in JOLTS as

$$R^{(s)} = E \left(\frac{Vac_j}{Emp_j + Vac_j} \mid s_j = s \right), \quad (12)$$

⁹We estimate the sampling covariance of $\bar{g}_1^{(s)}, \dots, \bar{g}_6^{(s)}$, using 1,000 bootstrap samples from the raw microdata. The estimated sampling covariance matrix is included with the data archive.

¹⁰Only the first quarter of 2004 is available in this snapshot. The annualized real wage rate is, therefore, only available for the years 1990-2003.

where Vac_j is the number of openings reported by employer j , and Emp_j is employment. This statistic has an interpretation as the probability that a job opening in sector s is left vacant. Using the monthly JOLTS data disaggregated by sector for the years 2001-2003, we compute $\bar{g}_7^{(s)}$ as the simple average of the monthly observations for sector s . To measure the sampling variance of $\bar{g}_7^{(s)}$, we combined the median cross-sectional standard error (squared) of the job opening rate for each sector with that rate's time-series variation.¹¹

We measure sectoral productivity, $\bar{g}_8^{(s)}$, using data on value-added per worker from the Bureau of Economic Analysis (BEA) Annual Industry Accounts.¹² For each year between 1990-2003 (corresponding to our years of LEHD data), we take the BEA report of total value-added by NAICS sector in millions of chained 2005 dollars and deflate by reported employment in that sector. This yields a measure of value-added per worker for each year. We compute the moment used in estimation, $\bar{g}_8^{(s)}$, and its sampling variance, $s_8^{(s)}$, as the simple average and variance across the annual observations for sector k .

4.2 Data Summary and Data Availability

Table 1 reports the empirical moments used in estimation. These moments are publicly available in more detail than we report here. The moments of worker and employer effects are available disaggregated by firm size within sectors. Bootstrapped estimates of the sampling covariances are also available.¹³ It is not trivial to provide these data while maintaining the confidentiality of respondents providing the underlying microdata. The Census Bureau is not generally willing to release detailed descriptive statistics apart from the normally published data products. The data we have made available are protected by a distribution-preserving noise-infusion procedure. Each element of the microdata has been distorted in such a way that the individual observations are protected, yet the aggregate statistics are still analytically valid. The noise-infusion procedure is also used by the LEHD Program to generate the public-use Quarterly Workforce Indicators. For complete details of the noise infusion procedure and the way it preserves analytical validity, see Abowd, Gittings, McKinney, Stephens, Vilhuber and Woodcock (2012).

¹¹The sectoral classification for the public-use JOLTS data does not quite conform to the NAICS 2002 major sectors. We use a custom crosswalk that maps JOLTS sectors, which are generally more coarse, onto NAICS 2002. The details of the crosswalk are available upon request. We obtained median standard errors for 2013 by industry from JOLTSInfo@bls.gov.

¹²The BEA data are from the files `GDPbyInd_VA_NAICS_1998-2011.xlsx` and `GDPbyInd_VA_NAICS_1947-1997.xls`, retrieved from http://www.bea.gov/industry/gdpbyind_data.htm on 2013-03-20.

¹³The data are permanently archived at <http://digitalcommons.ilr.cornell.edu/ldi/21>.

Table 1: Empirical Moments by NAICS Major Sector

Sector	E(θ)	E(ψ)	Var(θ)	Cov (θ, ψ)	Var(ψ)	Emp. Share	Vac. Rate	Val. Add.	Corr (θ, ψ)
Agr. and related	-0.158	-0.194	0.533	0.016	0.188	0.015	0.016	0.066	0.052
Administration	-0.084	-0.112	0.483	0.053	0.198	0.064	0.039	0.037	0.170
Other Services	-0.036	-0.044	0.451	-0.042	0.234	0.031	0.032	0.051	-0.129
Manufacturing	-0.007	0.292	0.293	0.007	0.079	0.164	0.016	0.069	0.047
Accommodation	0.010	-0.358	0.468	-0.009	0.099	0.055	0.038	0.031	-0.044
Health	0.034	0.080	0.422	0.008	0.082	0.099	0.046	0.057	0.041
Utilities	0.035	0.535	0.210	-0.019	0.092	0.008	0.021	0.316	-0.135
Transportation	0.036	0.142	0.334	-0.014	0.113	0.037	0.021	0.068	-0.070
Govt. Services	0.039	0.121	0.318	-0.015	0.107	0.043	0.019	0.065	-0.083
Mining	0.040	0.486	0.334	0.005	0.088	0.005	0.016	0.461	0.027
Construction	0.040	0.204	0.334	-0.005	0.106	0.067	0.019	0.097	-0.027
Real Estate	0.041	0.071	0.436	-0.012	0.160	0.016	0.023	0.652	-0.043
Retail	0.076	-0.119	0.391	-0.007	0.106	0.111	0.024	0.044	-0.036
Arts	0.100	-0.225	0.569	-0.004	0.248	0.013	0.031	0.063	-0.012
Wholesale	0.124	0.232	0.361	0.002	0.118	0.052	0.021	0.086	0.010
Information	0.166	0.287	0.462	0.001	0.234	0.030	0.028	0.113	0.030
Finance	0.168	0.275	0.358	0.005	0.088	0.049	0.032	0.129	0.026
Management	0.187	0.348	0.379	0.014	0.087	0.007	0.039	0.121	0.078
Professions	0.221	0.317	0.408	0.017	0.214	0.058	0.039	0.103	0.057
Education	0.236	-0.175	0.455	-0.027	0.087	0.076	0.019	0.047	-0.137

SOURCE - The moments in θ and ψ are based on authors' calculations of person- and firm-specific components of log earnings. These, and the employment shares, are estimated from LEHD data between 1990-2003. Data on value-added per worker by sector are as reported in the Bureau of Economic Analysis (BEA) Annual Industry Accounts.

5 Parameterization and Estimation Details

We fit the coordination friction model to 159 unrestricted moments.¹⁴ The model predicts the components of the AKM decomposition, $(\hat{\theta}^*, \hat{\psi}^*)$, their joint distribution in realized matches within and across sectors, the sectoral distribution of employment, sectoral output per worker, and sectoral vacancies. This is sufficient information to compute theoretical analogues to the empirical moments. Formulas for the estimating equations in terms of model primitives and equilibrium quantities are fully specified in Appendix E.

5.1 Parameterization of the Coordination Friction Economy

We fit a vector, $\zeta = (\mu, \nu, h, \chi, \varepsilon, \phi, \beta, \rho, \varsigma)$, of 52 structural parameters. The parameter μ_m measures the share of workers of type m . We assume $M = 5$ types of worker and impose,

¹⁴Because the employment shares sum to one, we delete one sector share—NAICS government (92).

without loss of generality, that $\sum_{m'} \mu_{m'} = 1$, leaving four free parameters. Each type m worker is endowed with productivity, $h_m \in (0, 1)$.¹⁵ In estimation, we require that the worker productivity distribution have mass at $h_2 = 0.25$ and $h_4 = 0.75$. We then estimate h_1 , h_3 , and h_5 as free parameters on $[0, 0.25)$, $(0.25, 0.75)$, and $(0.75, 1]$, respectively.

The model assumes a single dimension of productive heterogeneity across employers. We now specify how productivity varies across and within sector. We model 20 sectors that each offer 3 latent job types. There are thus $N = 60$ job types distinguished by productivity. The index n of the job is (s, ℓ) , where $s = 1, \dots, 20$ indicates the sector and $\ell = 1, \dots, 3$ indicates the productive job type for that sector. The parameter $\nu_n = \nu_{s, \ell}$ is the measure of jobs of type n . The total number of openings in each sector is a free parameter, and we assume openings are uniformly distributed across the three latent job types.

Employer productivity, $k_n = k_{s, \ell} \in (0, 1)$, varies by sector and the latent job type. We define k_n as

$$k_n \equiv k_{s, \ell} = \phi \chi^{(s)} + (1 - \phi) \varepsilon k_j. \quad (13)$$

where $k_j \in \{0.1, 0.5, 0.9\}$ is a grid over latent levels of employer productivity. Productivity depends on $\chi^{(s)} \in (0, 1)$, a sector-specific productivity level, ε , a productivity dispersion parameter, and ϕ , which determines how much of the variation in productivity is across sectors and how much is within sectors.

Output is produced by combining worker and employer productivity according to a constant returns to scale constant elasticity of substitution (CES) production function. The CES production function can be either log supermodular or log submodular, and, as such, admits either positive or negative assortative matching Shimer and Smith (2000).¹⁶ The output from matching a type m worker to a type n employer is:

$$x_{m, n} = A (\beta h_m^\rho + (1 - \beta) k_n^\rho)^{1/\rho}. \quad (14)$$

A is total factor productivity, β is worker productivity's share in output, and $\sigma = 1/(1 - \rho)$ is the elasticity of substitution. β and ρ are free parameters to be estimated. We set the TFP parameter to $A = 300,000$ to match the scale of output.¹⁷

¹⁵We impose that worker productivity is strictly increasing across types: $h_{m'} > h_m$ whenever $m' > m$. This restriction avoids solutions that simply relabel the worker types.

¹⁶See Shimer and Smith (2000) for details. For our application, the assumption of constant returns to scale is not restrictive, since it amounts to a rescaling of the latent variables h and k .

¹⁷We experimented with estimating A directly. In practice, we get estimates of A close to the calibrated level. Changing A does little to affect our qualitative results.

The job openings rate from JOLTS likely understates the extent of labor demand, or slot constraints, within sectors. Davis et al. (2013) report that 41.6 percent of hires occur in establishments without a vacancy posting. Without correction, our model predicts many more vacancies than reported by JOLTS. The discrepancy is due to a disconnect between the model’s notion of a job opening, which represents a binding slot constraint, and the concept measured in the data, which is the number of positions for which employers are actively recruiting. We address this problem by introducing a parameter, $\varsigma \in [0, 1]$, that rescales the level of vacancy rates while preserving their cross-sector variation.

5.2 Estimation Details

The moment estimator, $\hat{\zeta}_\Omega$, solves

$$\hat{\zeta}_\Omega = \arg \min(\bar{g} - \gamma(\zeta))^T \Omega (\bar{g} - \gamma(\zeta)) \quad (15)$$

We solve equation (15) by Adaptive Simulated Annealing (ASA) (Ingber 1993), which allows for adaptive rescaling of the parameter search.¹⁸ Simulated annealing is known to be effective on related estimation problems (Goffe et al. 1994), and the ASA variant is particularly useful in applications that involve a large parameter space and in which the sensitivity of the objective function varies widely across the parameters. In practice, we set $\Omega = I$, the identity matrix.

At each iteration in the algorithm, ASA proposes a vector of structural parameters, $\tilde{\zeta}$. At $\tilde{\zeta}$, we solve the planner’s problem in the coordination-friction economy in equation (4) numerically.¹⁹ Equilibrium queue lengths in the decentralized economy are identical to those the planner chooses, and we obtain the equilibrium wage offers by application of equation (5). With the matching set and wage offers in hand, we calculate the theoretical moments as in Section 3.2.

Once the simulated annealing procedure converges to an estimate, $\hat{\zeta}_A$, we estimate its covariance matrix as: $(F^T \Omega F)^{-1} F^T \Omega S \Omega F (F^T \Omega F)^{-1}$ where $F = F(\zeta) = \frac{\partial f(\zeta)}{\partial \zeta}$ and S is the covariance matrix of \bar{g} .

¹⁸To implement ASA in MATLAB, we use the ASAMIN routine maintained by Shinichi Sakata (Sakata and White 2001).

¹⁹The planner’s problem is convex, so a global minimum is guaranteed to exist.

5.3 Identification

5.3.1 Identification of Equilibrium Wages and Matching Sets

The data generating process identifies the joint distribution of observed wages and error components from the linear decomposition of log wages into person and employer-specific components. From equation (11), the identified quantities are the wage components associated with each worker and employer heterogeneity class, $(D\hat{\theta}^*, F\hat{\psi}^*)$. The data also identify their joint distribution with observed (log) wages across matches

$$\left(\Lambda^* \ln w^*, \Lambda^* D\hat{\theta}^*, \Lambda^* F\hat{\psi}^*\right). \quad (16)$$

Our identification argument relies on discretizing the worker and employer types across matches. It follows that the expected equilibrium matching set, Λ^* , is identified by solving for $(\Lambda^* - I)$ in

$$\Lambda^* D\hat{\theta}^* - D\hat{\theta}^* = (\Lambda^* - I) D\hat{\theta}^*,$$

which is feasible since $(\Lambda^* - I)$ is diagonal. As long as Λ^* is full rank, it is then possible to recover the vector of equilibrium log wage offers $\ln w^*$, from the observed wage distribution.

5.3.2 Identification of Equilibrium Queues and Match Output

Even though we observe which workers earn the most and which firms pay the most, we cannot rank the classes by ability or productivity without additional model information. Shimer's model implies that expected income is identical across jobs for workers of a given ability type. Furthermore, expected income is equal to the expected marginal product.

The number of available jobs of type n , ν_n , is identified from the observed vacancy rate in the sector together with our assumption that vacancies are evenly distributed across latent job types within sector. The equilibrium queue lengths are identified from the system based on Equation (6):

$$\frac{\lambda_{m,n}}{\nu_n} = e^{-Q_{m+1,n}} (1 - e^{-q_{m,n}}). \quad (17)$$

Given the ability ranking of worker types, this is a system of five equations in five unknowns for each job type n with a unique solution. When the ability ranking of worker types is not known, there is a separate system of equations for each possible ranking. We use the additional information regarding income expectations to select the correct ranking.

Under Shimer's model, the worker expects income

$$y_{m,n} = e^{-Q_{m+1,n}} \frac{1 - e^{-q_{m,n}}}{q_{m,n}} w_{m,n}. \quad (18)$$

Furthermore, the model requires $y_{m,n} = y_{m,n'} \equiv v_m$ for all jobs n and n' for which type m workers apply with positive probability.

Theorem 1 There exists a unique ranking of worker and employer types such that the equilibrium queue lengths derived from solving (17) also satisfies the restriction $v_m \equiv y_{m,n} = y_{m,n'}$ for all jobs n and n' that type m workers apply for with positive probability.

Proof. That such a ranking exists is ensured by the existence of a competitive equilibrium. Our goal is to recover the equilibrium application queues associated with the true ranking that generated the observed data, $\lambda_{m,n}$, $w_{m,n}$, and ν_n . Combining equations (17) and (18) and rearranging terms yields

$$\rho_{m,n} \equiv v_m q_{m,n} = \frac{\lambda_{m,n}}{\nu_n} w_{m,n}.$$

The right-hand side consists of observed data, which therefore identify the product $\rho_{m,n} \equiv v_m q_{m,n}$ without further restriction. Suppose, by contradiction, there are two rankings that simultaneously satisfy (17) and (18). Let q^* and q^{**} be the queues associated with each respective ranking. Then each ranking must be associated with unique values for expected income – v_m^* and v_m^{**} . This must be, since

$$q_{m,n}^* = \frac{\lambda_{m,n}}{\nu_n} \frac{w_{m,n}}{v_m^*}$$

so the only variation in queues can arise from differences in expected income. Let \hat{m}^* be the worker type of highest ability under the first ranking. Then

$$\frac{\lambda_{\hat{m}^*,n}}{\nu_n} = (1 - e^{-q_{\hat{m}^*,n}}) = \left(1 - \exp \left(- \frac{\lambda_{\hat{m}^*,n}}{\nu_n} \frac{w_{\hat{m}^*,n}}{v_{\hat{m}^*}} \right) \right)$$

which is defined over $[0, 1]$, continuous, and monotonically decreasing in $v_{\hat{m}^*}$. Therefore by the intermediate value theorem, there exists a unique solution $v_{\hat{m}^*}^*$. ■

The theorem establishes that the equilibrium queues are identified using the employment shares and the model's restrictions on expected income. The key to identification is that

the worker ability types are ranked by expected income, $y_{m,n}$, even when wages, $w_{m,n}$, are non-monotonic in ability. With the equilibrium queues in hand, match output, $x_{m,n}$, can easily be recovered for each match from equation (5).

5.3.3 Parameter Identification

The preceding arguments establish that the primitives of the model, (μ, ν, x) , are identified from the joint distribution of wages and the heterogeneity components from the AKM decomposition along with information on the level of job vacancies. In addition to these minimal data requirements, the data used in estimation also include value-added per worker, which is a source of over-identifying information. The parametric restrictions satisfy the order condition required for identification. It remains to be shown that the model satisfies the sufficient rank condition. We use the theoretical result that if the Jacobian, $F(\zeta)$, has full-column rank at the minimizer, ζ_0 , and constant rank in a neighborhood around ζ_0 , then ζ_0 is locally identified (Ruud 2000). We verify that $F(\zeta_0)$ is full rank. The smallest singular value of $F(\zeta_0)$ is the L^2 -norm distance from F to the space of rank-deficient matrices (Golub and Loan 1996). We verify that the smallest singular value is non-zero (1.647), which is sufficient for local identification since the continuous differentiability of F in ζ ensures that there is a neighborhood around ζ_0 in which F always has full column rank.

5.4 Discussion of Key Assumptions

Data Generating Process

Equation (15) was formed from moments of the wage generating process that were sampled annually from the linked employer-employee data or were produced annually from alternative sources as noted in Section 4. We assume that the parameter vector ζ is temporally stable and characterizes the general equilibrium at each moment that input data were sampled. This is a maintained hypothesis of Shimer’s model.

Choice of the Number of Heterogeneity Types

In estimation, we assume five latent worker ability types and three latent employer productivity types within each sector, implying 60 different job types. We chose these values to trade off richness of the model with parsimony in estimation. With regard to the number of worker types, it is necessary to allow for more than two in order for an inversion of the rela-

relationship between unobserved ability and wages to be estimable in the data. Our choice of five worker types allows such an inversion to unfold at different points in the ability distribution. Indeed, estimates that allow fewer worker types do not fit nearly as well. Allowing more worker types did not yield much additional explanatory power. We estimate the model with three latent employer types within each sector in an effort to capture the rich within-sector variation in pay observed in the data, as well as the correlation between worker and firm pay. Adding more latent employer types does not improve the model enough to overcome any reasonable penalty for the additional free parameters.

6 Results

Our estimates indicate strong positive assortative matching in the assignment of workers to employers across sectors. The AKM worker and employer effects conceal assortative matching because of non-monotonicity in the estimated worker wage effects with respect to worker ability. In combination with the selection of realized matches, this non-monotonicity hides the true correlation between unobserved worker ability and employer productivity.²⁰

6.1 Model Primitives

We first report the estimated model primitives: the distribution of workers across latent ability types, the distribution of job openings across sectors and latent productivity types, and the production function that characterizes match output.

6.1.1 Worker and Employer Populations

Table 2 reports the distribution of worker ability and predicted worker effects from the AKM decomposition. In estimation, we impose, without loss of generality, that the population of workers has measure 1, *i.e.*, $\mu = 1$. We estimate, without parametric restriction, the share of workers in each of $M = 5$ latent productivity classes. Column (1) reports the distribution of workers over types, and Column (2) reports the productivity of each type. The population shares of ability types 1 – 5 are (0.374, 0.001, 0.030, 0.461, 0.134). Their respective productivities are (0.141, 0.25, 0.285, 0.75, 0.893).

Table 3 describes the estimated population of employers. Employers are characterized by heterogeneity in productivity that has two determinants – the sector, which is observable,

²⁰Table A.1 presents estimates of the parameters of the structural model and associated standard errors.

Table 2: Population Distribution and Equilibrium Matching of Workers by Ability Type

Worker Type (m)	Pop. Share μ_m (1)	Productivity h_m (2)	Person Effect $\hat{\theta}_m^*$ (3)	Emp. Share (4)
1	0.374	0.141	-0.175	0.292
2	0.001	0.250	-0.110	0.001
3	0.030	0.285	-0.026	0.032
4	0.461	0.750	0.172	0.487
5	0.134	0.893	-0.167	0.188

NOTE - The table entries are model parameters that characterize the predicted population heterogeneity across the five latent worker types, and associated equilibrium quantities. See Table A.1 for associated standard errors. In Column (2), the worker productivity parameters, $h_2 = 0.25$ and $h_4 = 0.75$, are imposed during estimation. Column (3) reports the expected worker-specific component from applying the AKM decomposition to log earnings under the equilibrium matching. Column (4) reports the expected employment shares under the equilibrium matching.

and a latent productive type, which is not. The total measure of job openings per worker is a free parameter for each sector. We report openings per worker in the first column. The productivity of each job type is reported in the remaining three columns.

6.1.2 Production Technology

Match output is produced according to the constant elasticity of substitution production function described in Section 5.1. We estimate $\hat{\sigma} = 0.828 (\pm 0.00001)$, an elasticity of substitution that implies that the economy-wide production function is log supermodular. Thus, the model equilibrium should exhibit positive assortative matching. We also estimate the worker productivity share as $\hat{\beta} = 0.364 (\pm 0.00002)$.

Figure 1 illustrates the estimated production function. Each point represents a potential match that could be formed given the distribution of worker ability and employer productivity types. Employer productivity is shown on the horizontal axis, while the vertical axis shows output. Output is measured in chained 2005 dollars to match sectoral data on value-added per worker. Each line in the graph corresponds to the output produced by matching a worker of a particular productive type to a job with the productivity level shown on the horizontal axis. The figure illustrates the comparative advantage of high-ability workers in high-productivity jobs. Workers of type 2 and 3 are almost equally productive. However, there are very few such workers, so they have little effect on equilibrium quantities. Workers

Table 3: Employer Productivity By Sector and Job Type

Sector	Openings	Employer Productivity			Mean
		Low Prod.	Mid. Prod.	High Prod.	
Agr. and related	0.120	0.435	0.557	0.679	0.561
Mining	0.046	0.098	0.220	0.342	0.264
Utilities	0.004	0.607	0.729	0.852	0.732
Construction	0.072	0.590	0.713	0.835	0.715
Manufacturing	0.054	0.493	0.616	0.738	0.619
Wholesale	0.003	0.480	0.602	0.724	0.606
Retail	0.093	0.541	0.663	0.786	0.666
Transportation	0.045	0.212	0.334	0.456	0.347
Information	0.012	0.364	0.487	0.609	0.493
Finance	0.074	0.449	0.571	0.693	0.575
Real Estate	0.007	0.585	0.707	0.829	0.710
Professions	0.029	0.430	0.553	0.675	0.557
Management	0.080	0.538	0.661	0.783	0.664
Administration	0.021	0.483	0.606	0.728	0.609
Education	0.031	0.080	0.203	0.325	0.264
Health	0.015	0.329	0.451	0.574	0.458
Arts	0.096	0.501	0.624	0.746	0.627
Accommodation	0.092	0.091	0.214	0.336	0.263
Other Services	0.053	0.143	0.266	0.388	0.290
Govt. Services	0.054	0.239	0.361	0.483	0.372

NOTE - In the model, each sector contains low, middle, and high productivity jobs. The table entries report productivity per job estimated under the model. See Table A.1 for associated standard errors. The final column reports the employment-weighted average productivity per job in the sector.

of type 4 and 5 are much more productive than workers of type 1, but are themselves almost, but not quite, perfect substitutes in production.

6.2 Model Equilibrium

Equilibrium is characterized by wage offers from each employer to each type of worker, and by the resulting equilibrium application and hiring decisions. Figure 2 presents equilibrium wage offers for each potential match. The vertical axis measures the equilibrium wage offer. Each line represents the wages offered to workers of the indicated type by employers with the level of productivity shown on the horizontal axis. Wage offers are increasing in employer productivity, as the coordination friction model requires. The same is not true for the latent worker productivity. Wage offers to the most able workers – ability type 5 – are actually

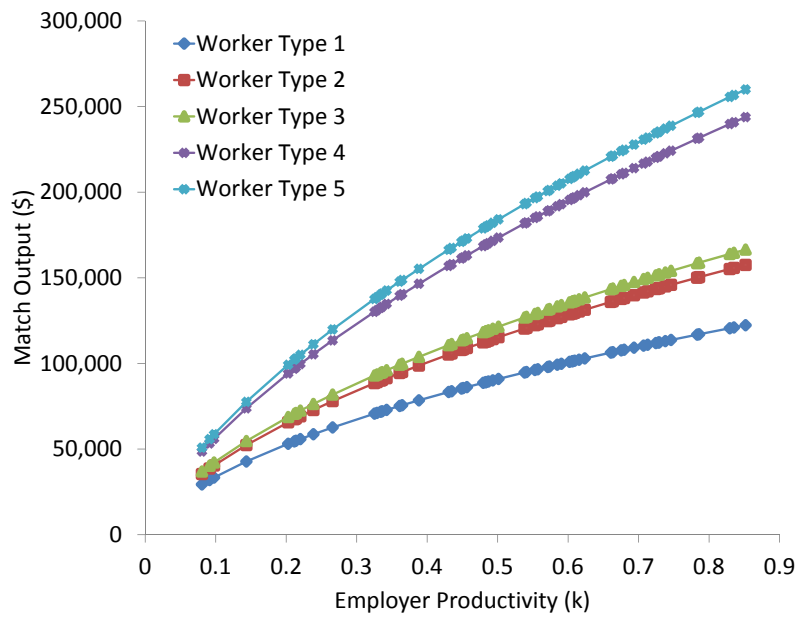


Figure 1: Output per worker.

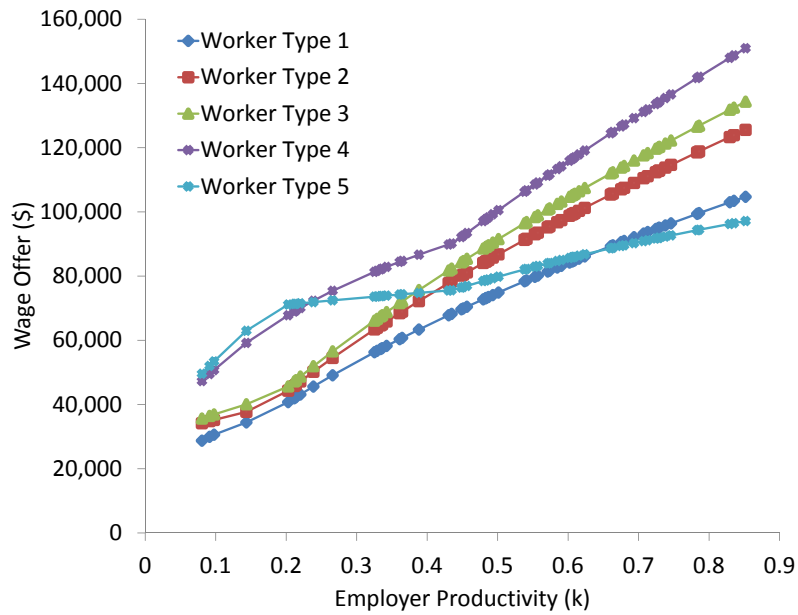


Figure 2: Equilibrium wage offers.

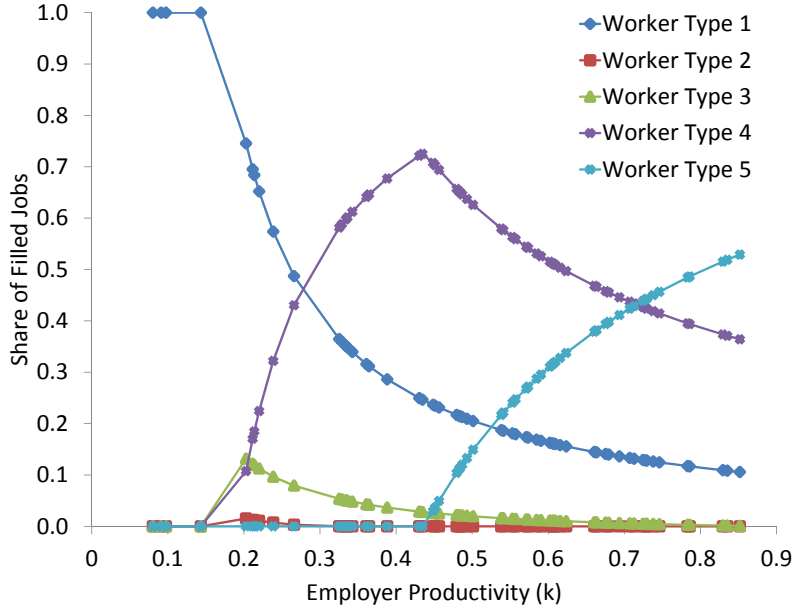


Figure 3: Equilibrium matching of workers to jobs.

lower than wage offers to less able workers. In the most productive jobs, high-ability workers actually receive the lowest wage offers.

The nonmonotonicity result is a feature of the model and reflects a combination of general equilibrium factors. Unemployment risk between type 4 and type 5 workers is discontinuously greater than the productivity difference between those types. Employers always hire a type 5 worker before a type 4 worker if both apply. The higher wage offer to type 4 reflects a compensating differential for unemployment risk resulting from the possibility of type 5 applications. The wage offers also reflect the marginal value to the employer of attracting another application from each type of worker. We can interpret type 4 workers' high wage offer as a measure of their ability to hold the employer up when the employer actually needs their labor because there are no type 5 applicants. From the employer's perspective, the value of the option to hire a type 4 worker, which requires that a type 4 worker apply, is very high in the case that no type 5 worker applies. The hold-up power of type 5 workers is very limited for two reasons: there are relatively many other type 5 workers, and type 4 workers are close substitutes. Thus, the marginal value to the employer of a type 5 application is low relative to the marginal value of a type 4 application.

The equilibrium matching is characterized in Figures 3 and 4. Figure 3 shows the share

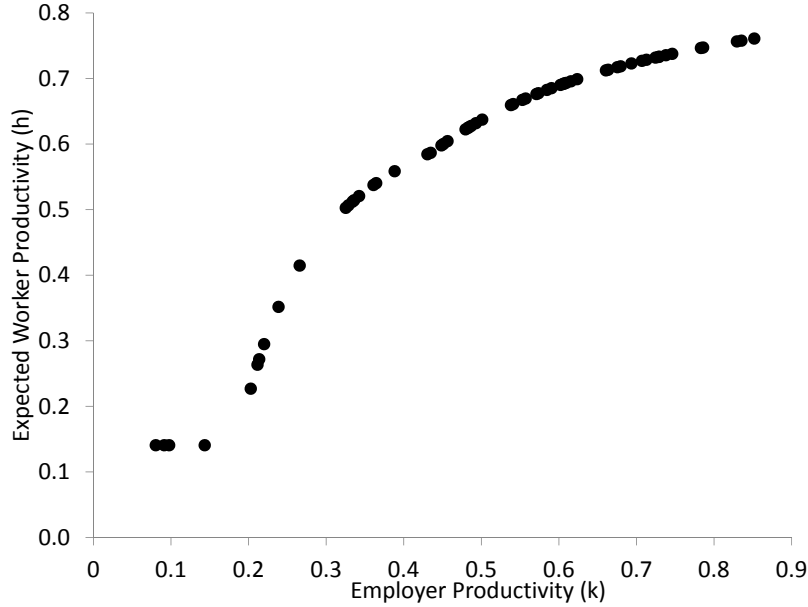


Figure 4: Equilibrium expected worker productivity.

of employment in each job type for each worker type. The vertical axis measures the share of filled jobs. Each line records the share of jobs that are filled by workers of the indicated type. For each employer productivity level on the horizontal axis, the sum of the share of those jobs held by each worker type is one. Most jobs are filled by workers of type 1, 4, or 5, reflecting their population shares. Second, and more importantly, the Figure illustrates the presence of positive assortative matching and the presence of matching frictions. Low-productivity jobs are filled predominately by low-ability workers. High-productivity jobs are filled predominately by high-ability workers. In the intermediate range of employer productivity, we observe a substantial overlap of worker types. Jobs with productivity greater than 0.2 are filled by all three common types of worker (1, 4, and 5), albeit in different proportions.

The positive assortative matching is even more clearly shown in Figure 4, which displays a scatter plot of job productivity versus the expected level of worker productivity. There is no positive assortative matching at very low levels of employer productivity, since only the least-able workers sort into those jobs. However, over most of the range of employer productivity, the average level of human capital is monotonically increasing with job-specific capital (employer productivity). This result implies, as we will see, positive assortative

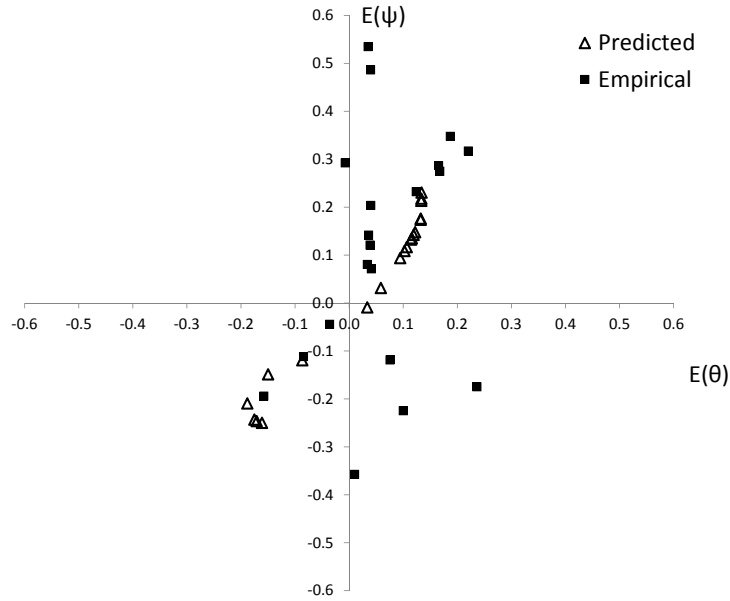


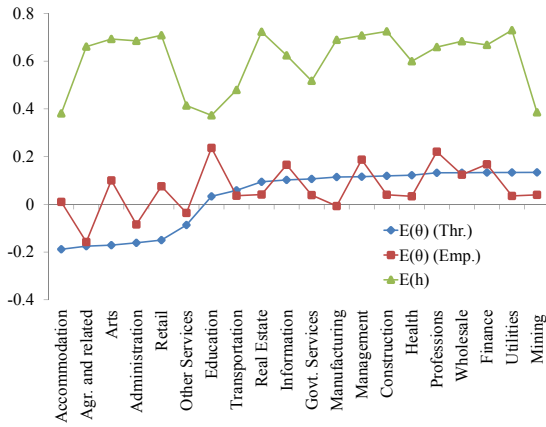
Figure 5: Mean worker effect (θ) against mean firm effect (ψ) in each sector, empirical and actual. Actual values are indicated by squares. Predicted values are indicated by triangles.

matching both across and within sectors.

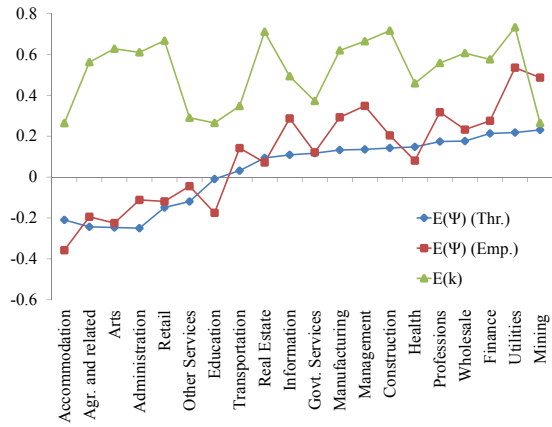
6.3 Model Fit

To evaluate model fit, we compare predicted to actual values of the observable moments used to estimate the structural parameters. The model fit is particularly good on several dimensions: the fitted moments associated with average worker effects in wages (θ), average employer effects in wages (ψ), vacancy rates, value added per worker, and the variance of worker effects all match the actual moments reasonably well. Figure 5 compares the empirical and predicted equilibrium relationship between the average worker effect, $E(\theta)$, and average employer effect, $E(\psi)$, by sector. The black squares indicate the observed values, and the triangles indicate the predicted values. The relationship between worker and employer effects is strong and positive for the model predicted values, which clearly capture the central tendency in the between-sector covariance of worker and firm earnings components, though clearly not all of the between-sector variance.

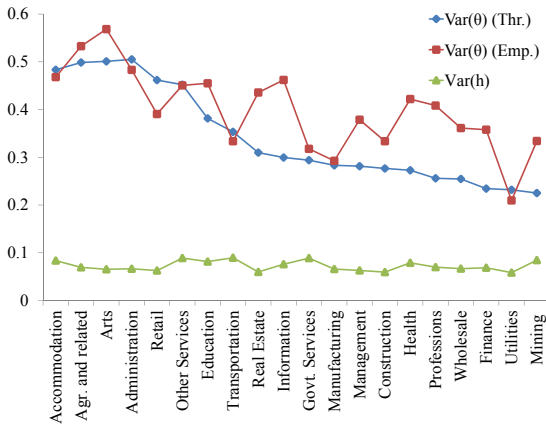
Figure 6 displays the model fit by sector with respect to the worker and firm-specific



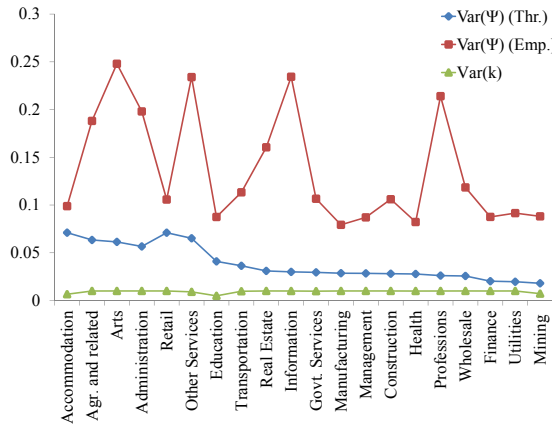
(a) Mean Worker Effect



(b) Mean Firm Effect



(c) Var. Worker Effect



(d) Var. Firm Effect

Figure 6: Model Fit. Sectors sorted by predicted mean worker effect.

components of log earnings.²¹ Each panel reports for each sector the empirical data, the predicted values, and the associated latent productivity component. The sectors are sorted by the predicted average worker effect in that sector. For instance, Figure 6a reports for each sector the empirical average worker effect, the expected average worker effect under the model, and the expected average worker productivity.

Three features of Figures 6 and 7 stand out. First, the model does an acceptable job matching the mean worker effects, mean employer effects, and the variance of worker effects. Second, the model fails to predict the within-sector variance of the firm effects, predicts

²¹Complete details of model fit are provided in the Appendix in Tables A.2–A.3. Table A.3 reports the raw (unscaled) difference between the empirical moments and the theoretical moments.

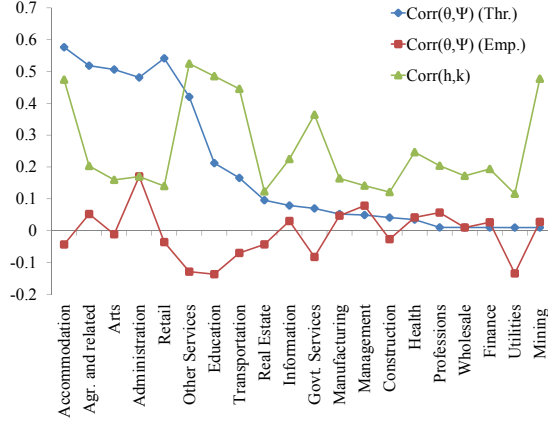


Figure 7: Model Fit (Worker/Firm Correlation).

counterfactually large within-sector correlations, and is unable to generate negative within-sector correlations. These results are consistent with the finding of Hornstein et al. (2011) that wage dispersion is difficult to support in the absence of on-the-job search. Third, the figures highlight the weakness of the relationship between the components of log earnings and the underlying productivity of workers and jobs – confirming the empirical significance of the coordination frictions. Even for those moments where the model fit is good, the variation across sectors in predicted moments of the earnings components is only weakly related to variation in the moments of worker ability and employer and productivity – again, confirming the empirical significance of relaxing the comparative advantage model by adding coordination frictions.

6.4 Discussion

Our estimates provide support for the central intuition that assortative matching may be masked by a non-monotone relationship between wage offers and ability. Figure 8 illustrates the non-monotonic relation using a scatter plot of two theoretical moments fit in our model (the AKM analogues): the estimated average employer wage effect versus the estimated average worker wage effect, for each sector-productivity class. The bubbles in the Figure are scaled by the predicted number of matches. As the employer wage effect increases, the expected worker wage effect increases, hits a maximum, and then decreases. This result occurs because the predicted employer wage effect is monotonically increasing in employer productivity. Because of assortative matching, the predicted worker ability is also increasing

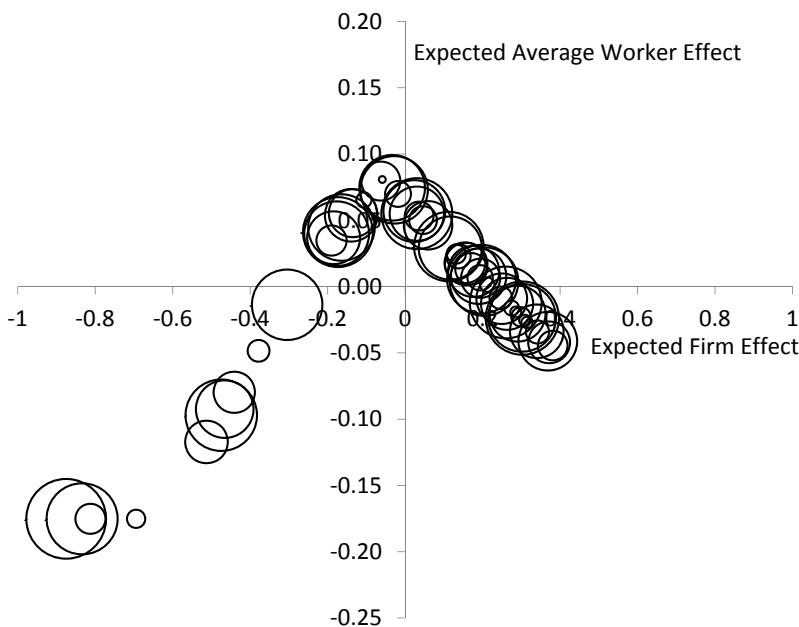


Figure 8: Theoretical average worker effect against expected firm effect. The bubbles are scaled by expected employment in each job type.

with the predicted employer wage effect. As employer productivity increases, the share of jobs filled by the highest-ability workers also increases. Because the highest-ability workers actually get lower wage offers, they also have lower worker wage effects in their wage data than lower-ability workers. Together, these factors pull down the average worker wage effect in high employer-productivity sectors. This figure clearly illustrates that the AKM decomposition produces worker and employer wage effects that do not reveal assortative matching even when the underlying ability and productivity distributions are so matched.

Nevertheless, the estimates also suggest that the between-sector correlation in worker and employer effects is a reliable measure of assortative matching across sectors. Figure 9 illustrates this relationship with two scatter plots. The first is of the predicted mean employer effect versus the predicted mean worker effect across sectors. The second scatter plot is the predicted mean level of employer productivity versus the predicted mean level of worker ability across sectors. The basic cross-sector correlations are very close, adding support to the view that the model, while failing to explain within-sector variation, is very useful for explaining the way workers sort across different industrial sectors.

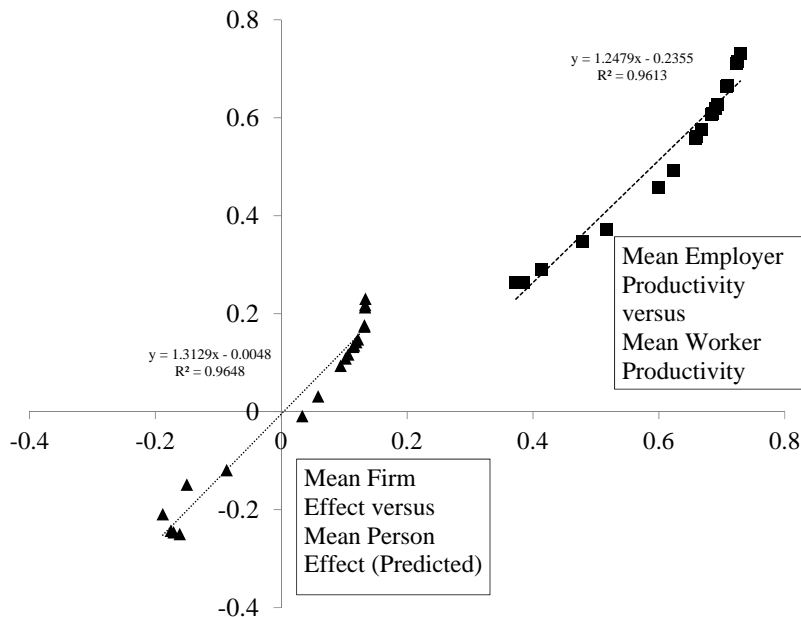


Figure 9: The left plot is of the predicted mean firm effect against the predicted mean worker effect by sector. The right plot is the predicted mean employer productivity against the predicted mean worker productivity.

7 Conclusion

In this paper, we forged a synthesis between the theoretical literature on labor market assignment and the empirical literature on inter-industry wage differentials. Our synthesis is valuable in both areas. The existing literature on assignment does not deal systematically with sector-specific variation in productivity and wages. We find that sorting is best interpreted as a between-industry phenomenon. Positive assortative matching clearly explains between-industry wage differences. We also find that sector-specific variation is useful for identification of these models. The empirical work on inter-industry differentials has long emphasized the importance of worker and employer heterogeneity, and the importance of sorting, but has struggled over the proper interpretation of the reduced-form evidence. Our estimates support the interpretation that more productive workers are positively sorted to more productive employers. These results, then, provide strong structural underpinning to the inter-industry wage differentials estimated by Abowd, Kramarz, Lengermann, McKinney and Roux (2012).

We implemented the first formal test of Shimer's model of job assignment with coordi-

nation frictions, remaining fully consistent with its assumption of static general equilibrium – an assumption that underlies the vast majority of models that have been suggested for explaining inter-industry wage differences. We estimated the full structural model by the method of simulated moments applied to sector-specific moments of the joint distribution of worker and employer specific components of wage heterogeneity, along with data on vacancies, output, and employment. Our empirical method is applicable to any assignment model that delivers predicted wage offers and matching sets. We make our input estimation moments, which are derived from restricted-access LEHD data, available to the public. We expect future work using these tools will sharpen our understanding of how the labor market assigns workers across and within industries.

Between sectors, the empirical evidence of matching is attenuated in the earnings data because high-productivity workers receive lower wages than workers who are almost, but not quite as, productive. This is a stunning validation of Shimer’s original hypothesis that, to guard against the possibility that, randomly, no higher-ability workers would apply for a particular job, it is profit maximizing to offer some lower-ability workers a compensating differential. Then, in equilibrium, there will be assortative matching when the technology is appropriate, but the worker and firm components of log earnings will not mirror this sorting. The result also confirms the points made by Abowd and Kramarz (1999) that the AKM components could be related to structural components in a variety of ways that would not necessarily imply that their correlation would reveal sorting in the labor market.

This paper is also among the first to estimate a structural assignment model with transferable surplus using matched employer-employee data. Our results suggest the potential, and the challenge, of using sectoral data to model labor market sorting. Exploiting cross-sector variation in earnings, vacancies, and value-added, while useful for identification, but also of primary economic interest. Assuming that employers operate a common production technology, and that labor market sorting matches differently able workers to differently productive jobs explains many features of the data, but fares poorly in predicting the within-sector variation in earnings.

While direct measures of individual worker and job productivity within sectors are quite rare, finding employer-level output measures would allow the use of within-sector moments for more variables than just wage outcomes. Such a strategy is a potentially promising way to provide additional empirical evidence on within-industry sorting to complement our evidence on between-industry sorting.

Bibliography

- Abowd, J., Kramarz, F., Lengermann, P., McKinney, K. and Roux, S. (2012). Persistent inter-industry wage differences: Rent sharing and opportunity costs, *IZA Journal of Labor Economics* **1**(1): 1–25.
- Abowd, J. M., Creecy, R. H. and Kramarz, F. (2002). Computing person and firm effects using linked longitudinal employer-employee data, *Technical Report TP-2002-06*, LEHD, U.S. Census Bureau.
- Abowd, J. M., Gittings, K., McKinney, K. L., Stephens, B. E., Vilhuber, L. and Woodcock, S. (2012). Dynamically consistent noise infusion as confidentiality protection, *Proceedings of the Federal Committee on Statistical Methodology*, Federal Committee on Statistical Methodology.
- Abowd, J. M. and Kramarz, F. (1999). The analysis of labor markets using matched employer-employee data, in O. Ashenfelter and D. Card (eds), *Handbook of Labor Economics*, Vol. 3 of *Handbook of Labor Economics*, Elsevier, chapter 40, pp. 2629–2710.
- Abowd, J. M., Kramarz, F. and Margolis, D. N. (1999). High wage workers and high wage firms, *Econometrica* **67**(2): 251–333.
- Abowd, J. M., Lengermann, P. and McKinney, K. L. (2003). The measurement of human capital in the U.S. economy, *Technical Report TP-2002-09*, LEHD, U.S. Census Bureau.
- Abowd, J. M. and Schmutte, I. M. (2015). Endogenous mobility, *Cornell University School of Industrial and Labor Relations* .
- Bartolucci, C. and Devicienti, F. (2012). Better workers move to better firms: A simple test to identify sorting, *Carlo Alberto Notebooks 259*, Collegio Carlo Alberto.
- Becker, G. S. (1973). A theory of marriage: Part I, *Journal of Political Economy* **81**(4): 813–46.
- Card, D., Cardoso, A. R. and Kline, P. (2013). Bargaining and the gender wage gap: A direct assessment, *Technical Report 7592*, IZA.
- Card, D., Heining, J. and Kline, P. (2013). Workplace Heterogeneity and the Rise of West German Wage Inequality, *The Quarterly Journal of Economics* **128**(3): 967–1015.

- Davis, S. J., Faberman, R. J. and Haltiwanger, J. C. (2013). The Establishment-Level Behavior of Vacancies and Hiring, *The Quarterly Journal of Economics* **128**(2): 581–622.
- Eeckhout, J. and Kircher, P. (2011). Identifying sorting-in theory, *Review of Economic Studies* **78**(3): 872–906.
- Goffe, W. L., Ferrier, G. D. and Rogers, J. (1994). Global optimization of statistical functions with simulated annealing, *Journal of Econometrics* **60**: 65–99.
- Golub, G. and Loan, C. (1996). *Matrix computations*, Johns Hopkins studies in the mathematical sciences, Johns Hopkins University Press.
- Hagedorn, M., Law, T. H. and Manovskii, I. (2012). Identifying equilibrium models of labor market sorting, *NBER Working Papers 18661*, National Bureau of Economic Research, Inc.
- Hornstein, A., Krusell, P. and Violante, G. L. (2011). Frictional wage dispersion in search models: A quantitative assessment, *American Economic Review* **101**(7): 2873–98.
- Ingber, L. (1993). Adaptive simulated annealing (ASA) global optimization C-code, *Technical report*, Caltech Alumni Association.
- Iranzo, S., Schivardi, F. and Tosetti, E. (2008). Skill dispersion and firm productivity: An analysis with matched employer-employee data, *Journal of Labor Economics* **26**: 247–285.
- Kennes, J. and le Maire, D. (2013). Job heterogeneity and coordination frictions, *Economics Working Papers 2013-09*, School of Economics and Management, University of Aarhus.
- Lise, J., Meghir, C. and Robin, J.-M. (2013). Matching, Sorting and Wages, *Sciences Po publications 11*, Sciences Po.
- Lopes de Melo, R. (2013). Firm wage differentials and labor market sorting: Reconciling theory and evidence. Working Paper.
- Mortensen, D. T. (2003). *Wage Dispersion: Why Are Similar Workers Paid Differently*, Zeuthen lecture book series, MIT Press.
- Ruud, P. A. (2000). *An Introduction to Classical Econometric Theory*, Oxford University Press.

- Sakata, S. and White, H. (2001). S-estimation of nonlinear regression models with dependent and heterogeneous observations, *Journal of Econometrics* **103**: 5–72.
- Shimer, R. (2005). The assignment of workers to jobs in an economy with coordination frictions, *Journal of Political Economy* **113**: 996.
- Shimer, R. and Smith, L. (2000). Assortative Matching and Search, *Econometrica* **68**(2): 343–370.
- Slichter, S. H. (1950). Notes on the structure of wages, *Review of Economics and Statistics* **32**(1): 80–91.
- Thaler, R. H. (1989). Interindustry wage differentials, *Journal of Economic Perspectives* **3**(2): 181–193.
- Woodcock, S. (2008). Wage differentials in the presence of unobserved worker, firm, and match heterogeneity, *Labour Economics* **15**: 772–794.

A For Online Publication Only – Additional Tables and Figures

Table A.1: Estimated Model Parameters

Panel A: Sector-Specific Parameters			Panel B: Global Parameters	
Sector	ν	χ	Parameter	Estimate
Agr. and related	0.11997 (0.00004)	0.11487 (0.00001)	μ_1	0.37392 (0.00279)
Mining	0.04554 (0.00017)	0.98819 (0.00001)	μ_2	0.00098 (0.00001)
Utilities	0.00424 (0.00010)	0.95985 (0.00003)	μ_3	0.03035 (0.00023)
Construction	0.07153 (0.00007)	0.79299 (0.00001)	μ_4	0.46053 (0.00343)
Manufacturing	0.05437 (0.00009)	0.76988 (0.00009)	h_1	0.14067 (0.00000)
Wholesale	0.00267 (0.00005)	0.87517 (0.00000)	h_3	0.28493 (0.00002)
Retail	0.09273 (0.00007)	0.31021 (0.00002)	h_5	0.89340 (0.00000)
Transportation	0.04480 (0.00007)	0.57244 (0.00001)	σ	0.82752 (0.00001)
Information	0.01162 (0.00005)	0.71670 (0.00000)	β	0.36445 (0.00002)
Finance	0.07427 (0.00003)	0.94984 (0.00001)	ε	0.58321 (0.00001)
Real Estate	0.00689 (0.00007)	0.68567 (0.00001)	ϕ	0.37283 (0.00002)
Professions	0.02887 (0.00008)	0.87033 (0.00001)	ς	0.076578 (0.00536)
Management	0.08014 (0.00011)	0.77634 (0.00000)		
Administration	0.02093 (0.00005)	0.08540 (0.00001)		
Education	0.03082 (0.00029)	0.51122 (0.00001)		
Health	0.01526 (0.00015)	0.80682 (0.00001)		
Arts	0.09624 (0.00003)	0.10400 (0.00005)		
Accommodation	0.09169 (0.00004)	0.19347 (0.00002)		
Other Services	0.05330 (0.00014)	0.35656 (0.00001)		
Govt. Services	0.05412 (0.00007)	0.73432 (0.00001)		

NOTE - Estimated parameters the structural coordination friction model and associated standard errors.

Table A.2: Best-fit Predicted Moments by NAICS Major Sector

Sector	$E(\theta)$	$E(\psi)$	$\text{Var}(\theta)$	$\text{Cov}(\theta, \psi)$	$\text{Var}(\psi)$	Emp. Share	Vac. Rate	Val. Add.	Corr (θ, ψ)
Agr. and related	-0.1752	-0.2432	0.4986	0.0921	0.0634	0.0957	0.0391	0.0772	0.5183
Administration	-0.1612	-0.2500	0.5051	0.0814	0.0566	0.0158	0.0412	0.0765	0.4813
Other Services	-0.0866	-0.1194	0.4521	0.0721	0.0652	0.0528	0.0301	0.0963	0.4202
Manufacturing	0.1144	0.1323	0.2832	0.0047	0.0286	0.0610	0.0239	0.1440	0.0520
Accommodation	-0.1883	-0.2095	0.4833	0.1068	0.0710	0.0810	0.0351	0.0814	0.5762
Health	0.1220	0.1477	0.2728	0.0030	0.0278	0.0172	0.0235	0.1479	0.0345
Utilities	0.1335	0.2177	0.2319	0.0006	0.0196	0.0049	0.0222	0.1633	0.0095
Transportation	0.0587	0.0312	0.3533	0.0188	0.0363	0.0480	0.0262	0.1224	0.1655
Govt. Services	0.1065	0.1166	0.2939	0.0065	0.0295	0.0603	0.0243	0.1403	0.0697
Mining	0.1339	0.2304	0.2251	0.0006	0.0180	0.0529	0.0220	0.1661	0.0096
Construction	0.1192	0.1420	0.2766	0.0036	0.0280	0.0806	0.0237	0.1464	0.0410
Real Estate	0.0944	0.0936	0.3098	0.0094	0.0310	0.0076	0.0248	0.1351	0.0955
Retail	-0.1498	-0.1489	0.4617	0.0980	0.0710	0.0896	0.0312	0.0906	0.5413
Arts	-0.1710	-0.2464	0.5009	0.0888	0.0614	0.0753	0.0399	0.0769	0.5062
Wholesale	0.1323	0.1761	0.2546	0.0008	0.0257	0.0030	0.0229	0.1548	0.0098
Information	0.1023	0.1085	0.2995	0.0075	0.0300	0.0129	0.0245	0.1384	0.0788
Finance	0.1334	0.2131	0.2344	0.0007	0.0202	0.0858	0.0223	0.1623	0.0097
Management	0.1158	0.1351	0.2813	0.0044	0.0284	0.0900	0.0238	0.1447	0.0489
Professions	0.1322	0.1736	0.2560	0.0008	0.0261	0.0330	0.0230	0.1543	0.0100
Education	0.0335	-0.0092	0.3815	0.0265	0.0410	0.0325	0.0271	0.1153	0.2121

NOTE - The table entries are best-fit values for the predicted moments under the model. The sectors are sorted by the mean empirical worker-effect, $E(\theta)$. $\text{Corr}(\theta, \psi)$ is not fit in estimation since it is derived from the empirical second moments, and is reported here for reference.

Table A.3: Moments by NAICS Major Sector: Predicted Less Empirical

Sector	$E(\theta)$	$E(\psi)$	$\text{Var}(\theta)$	$\text{Cov}(\theta, \psi)$	$\text{Var}(\psi)$	Emp. Share	Vac. Rate	Val. Add.
Agr. and related	-0.018	-0.049	-0.034	0.0757	-0.125	0.0806	0.0232	0.0109
Administration	-0.077	-0.138	0.0219	0.0287	-0.141	-0.048	0.0025	0.0393
Other Services	-0.051	-0.075	0.0015	0.114	-0.169	0.0221	-0.002	0.0457
Manufacturing	0.1217	-0.16	-0.009	-0.002	-0.051	-0.103	0.0074	0.0748
Accommodation	-0.199	0.1481	0.0153	0.1161	-0.028	0.0262	-0.003	0.0505
Health	0.0883	0.0673	-0.149	-0.005	-0.054	-0.082	-0.022	0.0909
Utilities	0.0982	-0.317	0.0222	0.0193	-0.072	-0.003	0.0012	-0.153
Transportation	0.0226	-0.11	0.0197	0.0324	-0.077	0.0113	0.0051	0.0543
Govt. Services	0.0677	-0.004	-0.024	0.0217	-0.077	0.0177	0.0048	0.0753
Mining	0.0941	-0.256	-0.109	-0.004	-0.07	0.0477	0.0061	-0.295
Construction	0.0791	-0.062	-0.057	0.0087	-0.078	0.014	0.0045	0.0497
Real Estate	0.0533	0.0225	-0.126	0.0209	-0.129	-0.009	0.0014	-0.517
Retail	-0.226	-0.03	0.0711	0.1054	-0.035	-0.022	0.0074	0.047
Arts	-0.271	-0.022	-0.068	0.0931	-0.187	0.0623	0.0085	0.0138
Wholesale	0.0082	-0.056	-0.107	-0.001	-0.093	-0.049	0.0022	0.0693
Information	-0.063	-0.178	-0.162	-0.002	-0.204	-0.017	-0.003	0.0259
Finance	-0.034	-0.062	-0.123	-0.004	-0.067	0.0371	-0.01	0.0336
Management	-0.071	-0.213	-0.097	-0.01	-0.059	0.0827	-0.015	0.0238
Professions	-0.088	-0.143	-0.152	-0.016	-0.188	-0.025	-0.016	0.0517
Education	-0.203	0.1657	-0.073	0.0539	-0.046	-0.043	0.008	0.068

NOTE - The table entries are differences between the best-fit values for the predicted moments (From Table A.2) and the empirical moments (from Table 1). The sectors are sorted by the mean empirical worker-effect, $E(\theta)$.

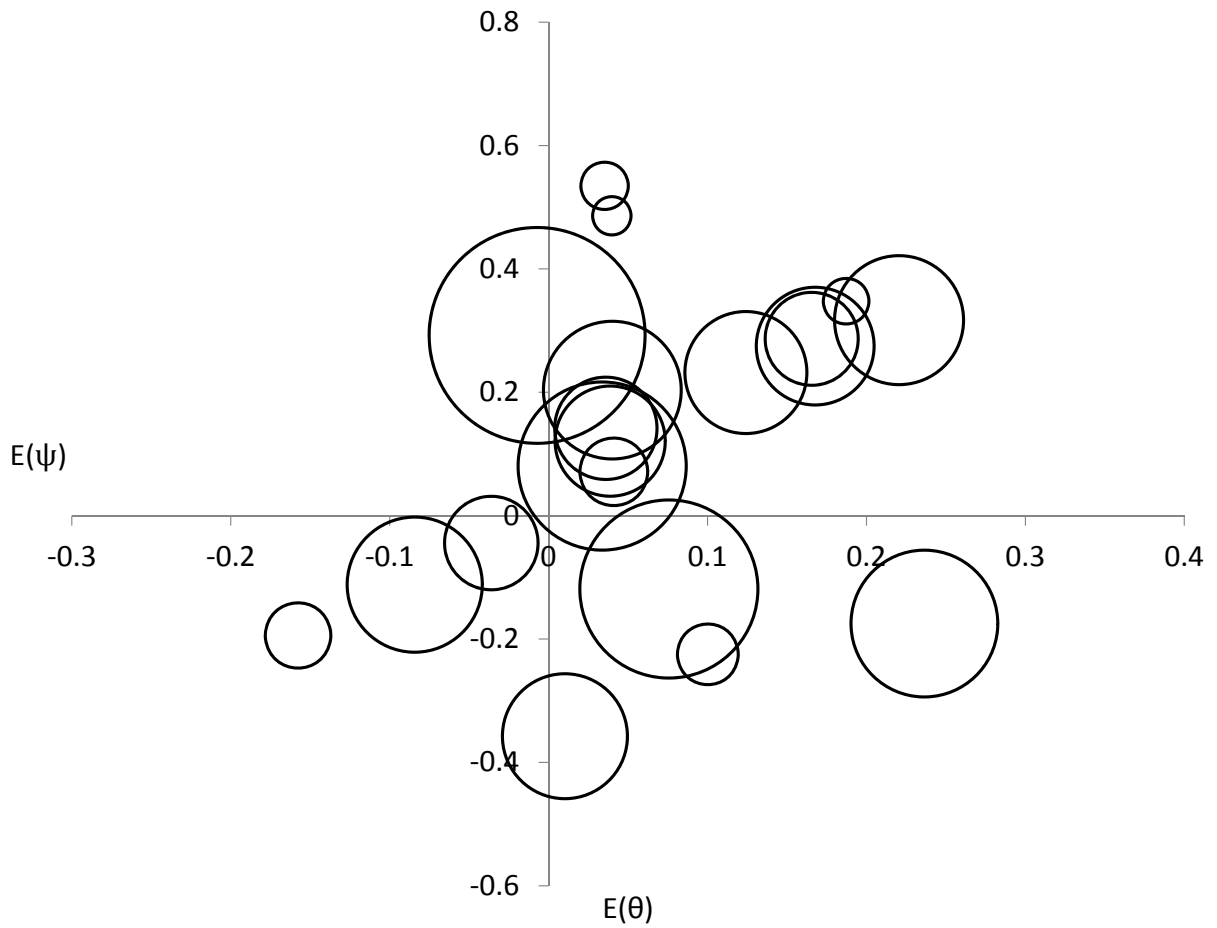


Figure A.1: Plot of the mean worker effect (θ) in each sector against the mean firm effect (ψ). The areas of the bubbles are scaled to represent the share of employment in each sector.

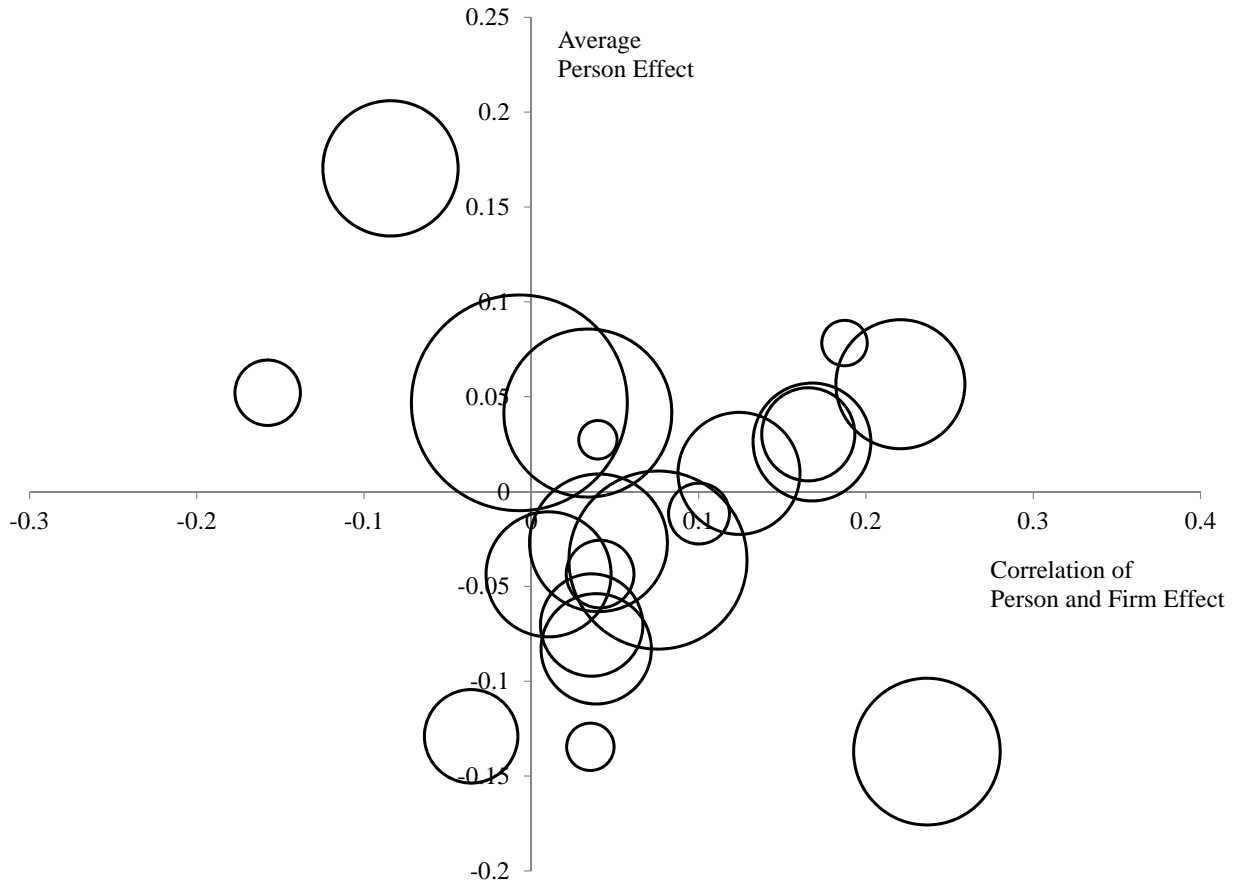


Figure A.2: Plot of the average worker effect (θ) against the correlation between worker and firm effects ($\text{Corr}(\theta, \psi_i)$) in each sector. The areas of the bubbles are scaled to represent the share of employment in each sector.

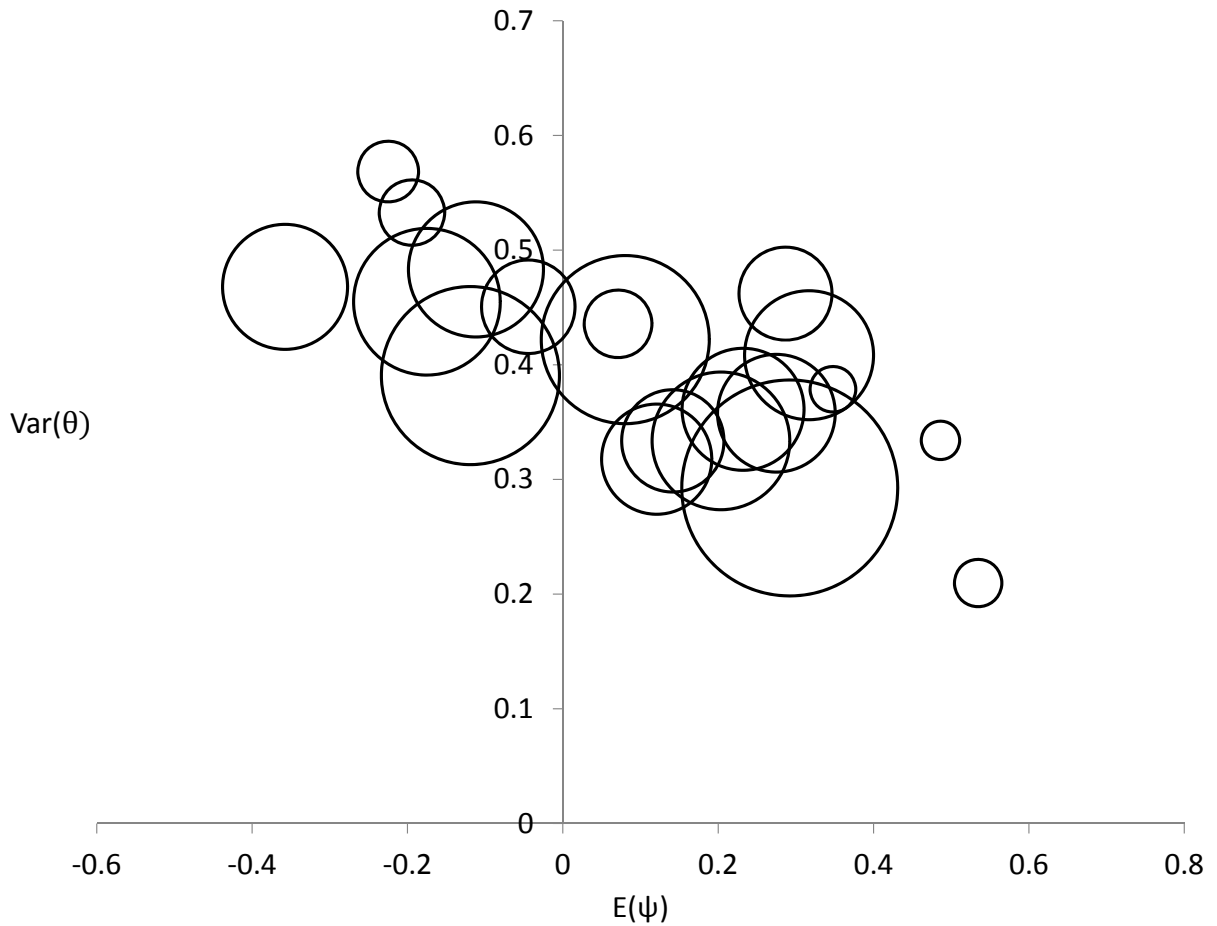


Figure A.3: Plot of the mean firm effect (ψ) against the variance of the worker effect (ψ) within each sector. The areas of the bubbles are scaled to represent the share of employment in each sector.

Figure A.4: Scatterplot of the theoretically predicted components of log wages across sectors – the variance of the worker effect against the expected firm effect. The bubbles are scaled by predicted employment in each sector. Compare to Figure A.2 which presents the empirical counterpart.

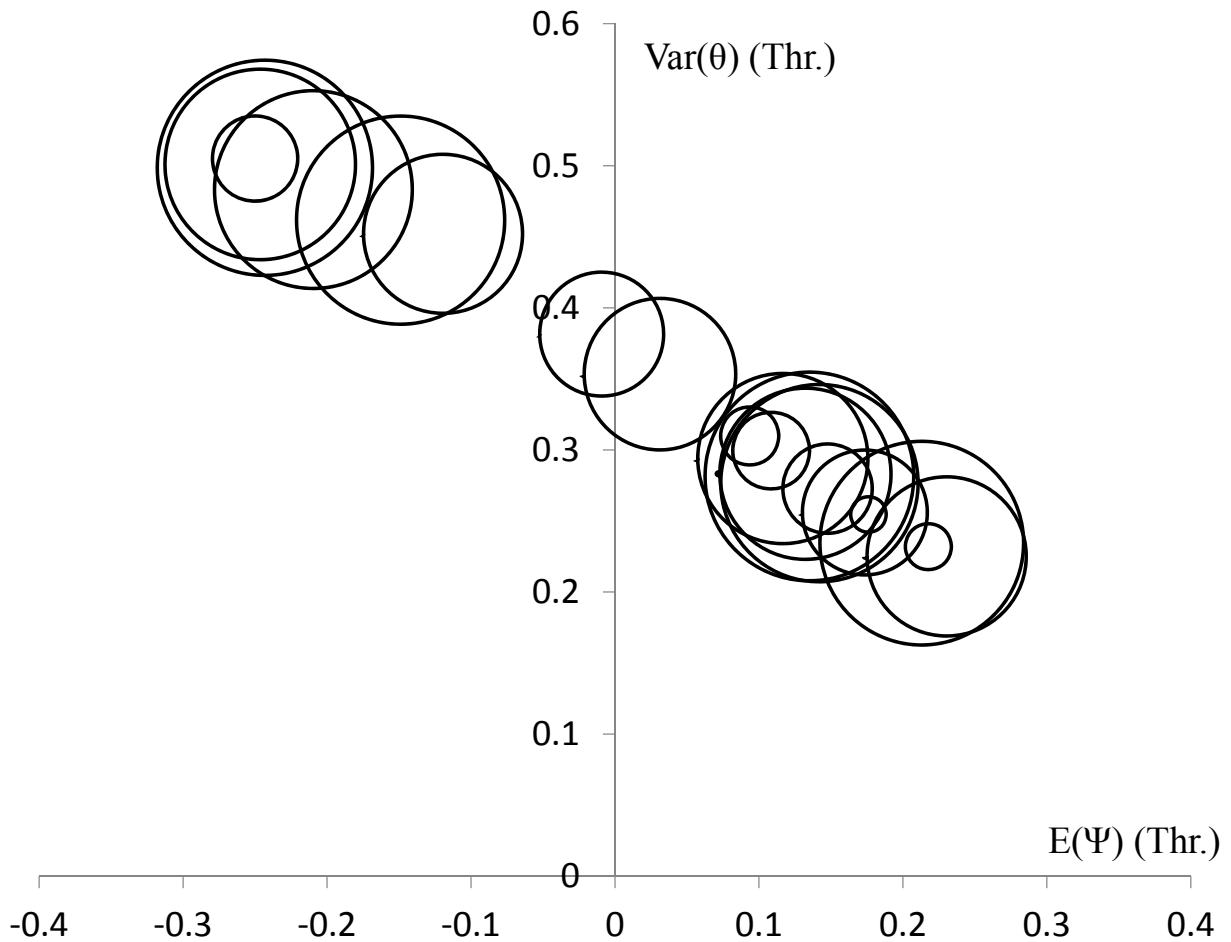


Figure A.5: Scatterplot of the theoretically predicted components of log wages across sectors – the variance of the worker effect against the expected firm effect. The bubbles are scaled by predicted employment in each sector. Compare to Figure A.3 which presents the empirical counterpart.

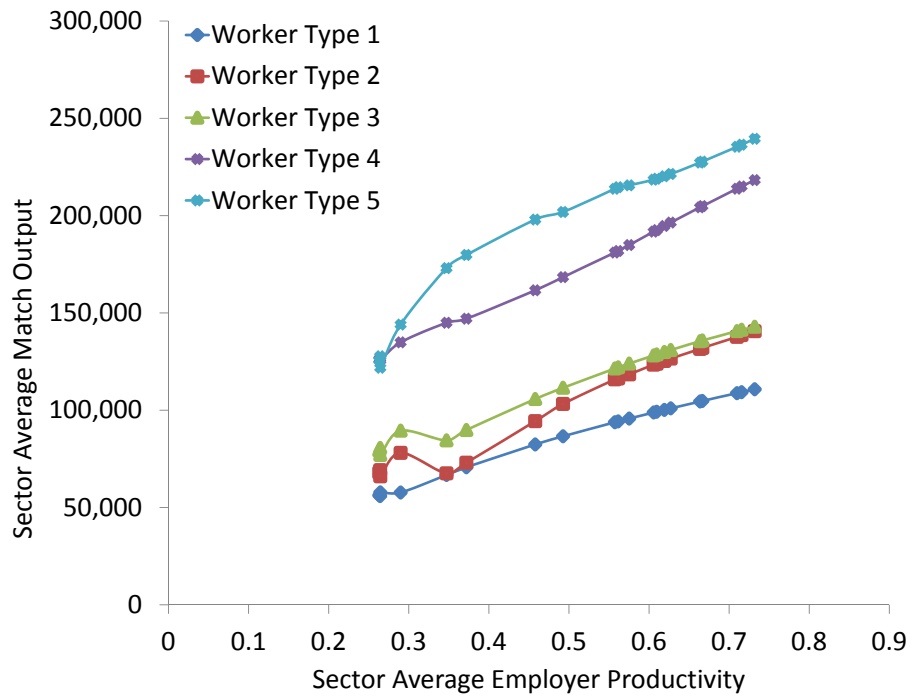


Figure A.6: Plotted points are employment-weighted average output per worker against employment-weighted average productivity (capital) for each sector. Each line corresponds to a different worker type.

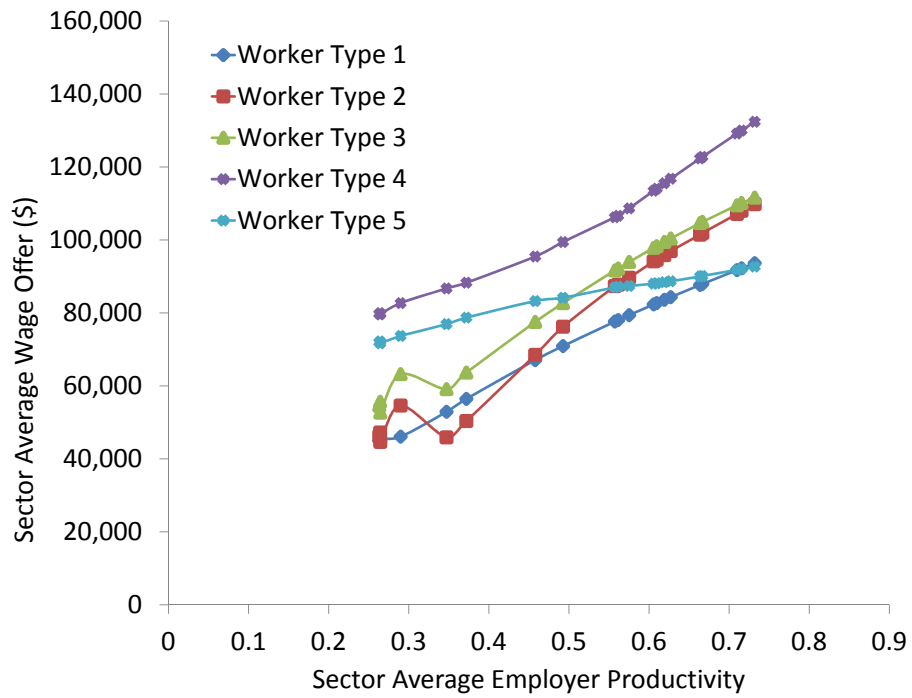


Figure A.7: Plotted points are the employment-weighted average wage offer against employment-weighted average productivity (capital) for each sector. Each line corresponds to a different worker type.

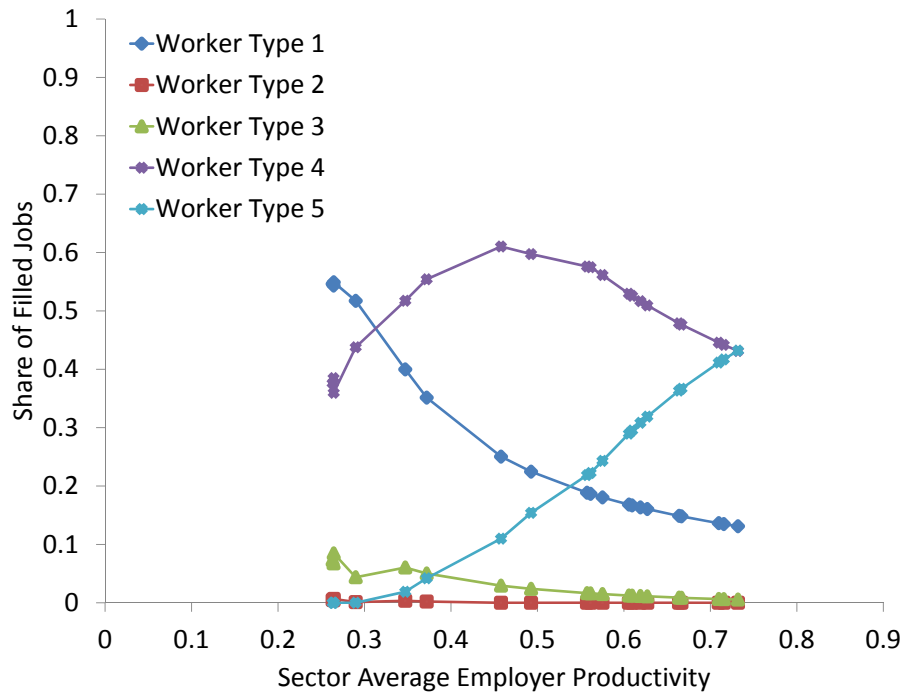


Figure A.8: Plotted points are share of workers of each type employed in each sector against employment-weighted average productivity (capital) for the sector. Each line corresponds to a different worker type.

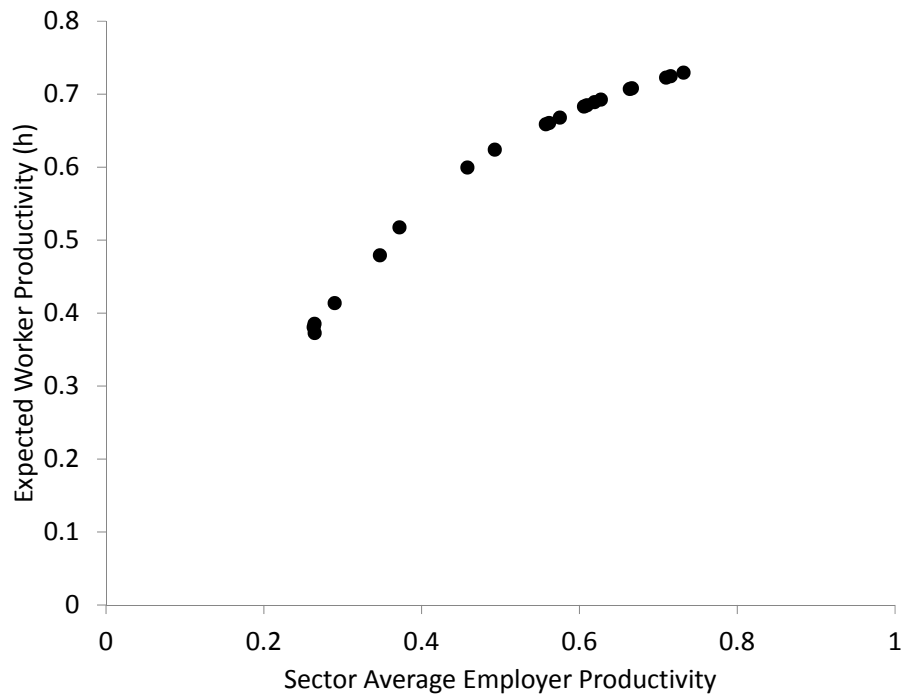


Figure A.9: Plotted points are the employment-weighted average human capital matched to a sector against the sectors employment-weighted average productivity (capital).

B For Online Publication Only – Data Appendix

We use data from the Longitudinal Employer-Household Dynamics Program (LEHD), universe data for twenty-eight large American states with information from 1990-2004. Our analysis sample is restricted to individuals aged 18-70, employed full-time at their dominant employer. The following sections describe the underlying microdata sources and how we construct the analysis variables and impose sample restrictions.

B.1 Unemployment Insurance

The individual data were derived from the universe of unemployment insurance (UI) quarterly wage records from twenty-eight states.²² The BLS Handbook of Methods (1997) describes UI coverage as “broad and basically comparable from state to state,” and claims over 96 percent of total wage and salary civilian nonfarm jobs were covered in 1994. The Federal Unemployment Tax Act (FUTA), first enacted in 1938, lays the ground rules for the kinds of employment which must be covered in state unemployment insurance laws. While technically mandating coverage of all employers with one or more employees in a calendar year, FUTA allows for numerous exceptions to covered employment. These include workers at small agricultural co-operatives, employees of the federal government, and certain employees of state governments, most notably elected officials, members of the judiciary, and emergency workers. According to the Handbook, UI wage records measure “gross wages and salaries, bonuses, stock options, tips, and other gratuities, and the value of meals and lodging, where supplied.” They do not include OASDI, health insurance, workers compensation, unemployment insurance, and private pension and welfare funds. Individuals are uniquely identified and followed for all quarters in which their employers had reporting requirements in the UI system. Thus, cross-state mobility can be observed for individuals moving between any of states for which we have data. Although coverage dates vary, all states provide between seven and thirteen years of data. In our analysis, by combining them into a single “pooled” file, we have information on approximately 190 million workers, 10 million employers, and 660 million annual earnings records.

²²We cannot disclose which states are included in the analysis as a condition imposed by the Census Bureau on the public use data. We can, however, release the moment matrices used in the structural estimation, upon request, as they have been designated as public-use data.

B.2 Creation of Variables

Using Census Bureau and other LEHD data bases, sex, race, and date of birth are combined with the individual earnings data using an exact match to administrative data. Upon each individual's first appearance in the data, labor force experience as potential labor force experience ($\text{age} - \text{education} - 6$) is calculated. In subsequent periods, experience is measured as the sum of observed experience and initial (potential) experience. The UI wage records connect individuals to every employer from which they received wages in any quarter of a given calendar year. Therefore, individual employment histories are constructed using the same personal identifier used in the individual data. Employers are identified by their state unemployment insurance account number (SEIN). While large employers undoubtedly operate in multiple states, their SEINs are unfortunately state specific, meaning they cannot be connected. In addition, while we match workers to their employers, it is not possible to connect those employed in firms with multiple establishments to specific places of work. This problem is not overly pervasive, as over 70% of employment occurs in firms with only a single establishment.

B.3 Earnings

For every year an individual appears in a state, a “dominant” employer — the employer for whom the sum of quarterly earnings is the highest—is identified in order to better approximate the individual's full-time, full-year annual wage rate using the following steps. First, define full quarter employment in quarter t as having an employment history with positive earnings for quarters $t - 1, t$, and $t + 1$. Continuous employment during quarter t means having an employment history with positive earnings for either $t - 1$ and t or t and $t + 1$. Employment spells that are neither full quarter nor continuous are designated discontinuous. If the individual was full quarter employed for at least one quarter at the dominant employer, the annualized wage is computed as 4 times average full quarter earnings at that employer (total full quarter earnings divided by the number of full quarters worked). This accounts for 84% of the person-year-state observations in our eventual analysis sample. Otherwise, if the individual was continuously employed for at least one quarter at the dominant employer, the annualized wage is average earnings in all continuous quarters of employment at the dominant employer multiplied by 8 (i.e., 4 quarters divided by an expected employment duration during the continuous quarters of 0.5). This accounts for 11% of all observations. For the remaining 5%, annualized wages are average earnings in each quarter multiplied by 12 (i.e.,

4 quarters divided by an expected employment duration during discontinuous quarters of 0.33).

B.4 Annual Hours of Work and Full-time Status

We restrict our sample to individuals who worked full-time for their dominant employer. Full-time status is taken to mean that the individual worked at least 35 hours per week. The average number of hours per week for a worker is given by dividing the number of hours worked over the year with the dominant employer by the number of weeks worked. The number of weeks worked is approximated based on the observed number of full, continuous, and discontinuous quarters with one's dominant employer. Specifically, we compute weeks worked as 13 times the number of full quarters + 6.5 times the number of continuous quarters + 4.33 times the number of discontinuous quarters. Annual hours of work are observed for a subset of individuals in the sample via a database link to other LEHD and Census sources. For those missing annual hours of work, a value is statistically assigned using a Bayesian multiple imputation procedure.

B.5 Human Capital Estimates

To the dominant job frame, we attach the variance components of earnings estimated from the Abowd et al. (1999) human capital decomposition. The estimation of those variance components in the LEHD data is the subject of another paper, Abowd et al. (2002), to which we refer the interested reader.

C For Online Publication Only – An Economy with Heterogeneous Workers and Firms

In this Appendix we derive worker and firm effects in an economy with only two types of workers and a continuum of firms differing by size and production technology. Notation in this appendix differs slightly from the notation in the main paper in order to accommodate the more general specification.

C.1 The Economy

Let the economy consist of two types of workers. This is not as limiting as it sounds, for it may only represent heterogeneity inside a particular class of workers since we consider the effects net of observables. The economy is divided in a finite number \bar{k} of industries. The workers are hired by a continuum of firms, indexed by the share x of type 1 workers each firm hires, the size t of the firm, and the industry k . The share x is unobserved by the econometrician. In industry k , there is a mass (density) $\mu_k(x, t)$ of firms of type (k, x, t) . We omit from what follows the k index except when it is necessary.

The economy as a whole is represented by the space $\Omega = \{\Omega_1, \dots, \Omega_{\bar{k}}\}$ with $\Omega_k = [0, 1] \times \mathbb{R}^+$, the space defining each industry. There is a quantity (or number) $J = \int_{\Omega} d\mu$ of firms, $J_k = \int_{\Omega_k} d\mu_k$ in each industry. Firm (x, t) hires xt of type 1 workers, and $(1-x)t$ of type 2. We write $\int_{\Omega} xt d\mu(x, t) = M$ and $\int_{\Omega} (1-x)t d\mu(x, t) = N$ so that there are $M + N$ workers in the economy. Type 1 workers earn $w(x, t, k)$ in firm (x, t) in industry k while type 2 earn $u(x, t, k)$; the wage only depends on the industry, the share of type 1 workers, and the size of the firm.

C.2 The Economy as Estimated by Person and Firm Effects

As in Abowd et al. (1999) (hereafter, AKM99), decompose the individual wage, $\ln w_{i,j(i,t),t}$, after conditioning for observables, in each period as the sum of an individual effect, θ_i , a firm effect, $\psi_{j(i,t)}$, and a residual, $\varepsilon_{i,j(i),t}$

$$\ln w_{i,j(i,t),t} = \theta_i + \psi_{j(i,t)} + \varepsilon_{i,j(i),t}$$

We consider here only the limiting (and purely theoretical) case where the number of time periods goes to infinity and the workers visit ergodically all firms and all industries. This frees us from the identification problem discussed in detail in the above paper. Moreover, the effects estimated in AKM99 would converge in probability to the theoretical values we show below.

In this case, even though the type of the worker is not directly known by the econometrician, observing the workers jump from job to job provides enough information to be able to reduce the above ordinary least squares (OLS) problem to the following minimization problem. Find W , U (worker effects) and $\psi(k, x, t)$ (firm effect in industry k for a firm of

size t hiring a proportion x of type 1 workers) that solve

$$\min_{W,U,\psi} \int_{\Omega} [xt(w(x,t) - W - \psi(x,t))^2 + (1-x)t(u(x,t) - U - \psi(x,t))^2] d\mu(x,t). \quad (19)$$

This problem is exactly equivalent to minimizing the sum of squared residuals in ordinary least squares. The solutions to this problem are unique up to a constant. We show that:

Theorem 2 Under integrability assumptions on w and u , the solutions to the OLS program (19) are of the type

$$W = \frac{\int x(1-x)tw(x,t)}{\int x(1-x)t} + \Lambda, \quad (20)$$

$$U = \frac{\int x(1-x)tu(x,t)}{\int x(1-x)t} + \Lambda, \quad (21)$$

$$\psi(x,t) = x(w(x,t) - W) + (1-x)(u(x,t) - U) - \Lambda \quad (22)$$

where the integrals are all taken on Ω with respect to the measure μ , and Λ is an arbitrary constant (we will set $\Lambda = 0$ in the rest of the paper).

Proof. Set $U = 0$ for the time being, as the solutions are only identified up to a constant. Let us write $J(W, \psi) = \int_{\Omega} \rho(W, \psi)(x, t) d\mu(x, t)$. J is defined on $\mathbb{R} \times L^2(\Omega, \mu)$, and may take the value $+\infty$. It is clear that ρ is convex in its two arguments (as sum of two squares); hence J is also convex, and can be show to be strictly convex if $w(x, t) - u(x, t)$ is not a constant. Hence it has a unique minimum under this assumption, characterized by the first order constraints

$$\int_{\Omega} xt(w(x,t) - W - \psi(x,t)) d\mu(x,t) = 0 \quad (23)$$

$$\int_{\Omega} xt(w(x,t) - W - \psi(x,t)) + (1-x)t(u(x,t) - \psi(x,t)) = 0 \quad (24)$$

Hence $W = \int xt(w - \psi) d\mu / \int xt dB$ and $\psi = x(w - W) + (1-x)u$. Replacing ψ by this last value in equation 23 and simplifying with the fact that $\int x^2t = M - \int x(1-x)t$ and $\int x^2tw = \int xtw - \int x(1-x)w$ proves the theorem. ■

Remark 3 (Some special cases) If all firms hire the same number of both types of workers, the distribution μ_k for all k is $\delta_{1/2,2}$, a Dirac distribution of firms of equal size and same number of type 1 workers. This leads to $W = \sum_k w_k/\bar{k}$, $U = \sum_k u_k/\bar{k}$, $\psi_k = \frac{1}{2}(w_k - \bar{w} +$

$u_k - \bar{u}$), where w_k is the wage in industry k .

The case where the distribution μ has all mass in t at $t = 2$ and $w(x, t) = u(x, t) + \delta$ leads to $W = U + \bar{\delta}$ and $\psi(x, t) = u(x) - U$.

We define the firm-employee effects covariances $\text{cov}(\hat{\theta}, \hat{\psi})$ as

$$\frac{\int (xtW + (1-x)tU)\psi(x, t) d\mu}{\int t d\mu} - \frac{\int (xtW + (1-x)tU) d\mu}{\int t d\mu} \frac{\int \psi(x, t) d\mu}{\int t d\mu} \quad (25)$$

For total covariance the integrals are taken over Ω , for within-sector covariance over Ω_k for all k , and the between-sector covariance is the discrete covariance between the means (i.e. integrals) on the Ω_k . Total covariance is as usual the sum of between-sector and within-sector covariances.

D For Online Publication Only – Computing the Theoretical Vacancy Rate

To derive the theoretical analogue to the empirical vacancy rates, recall that the empirical moment measured in JOLTS is

$$\bar{g}_7^{(s)} = R^{(s)} = E \left(\frac{Vac_j}{Emp_j + Vac_j} | s_j = s \right),$$

where the expectation is taken over all firms in sector s . This expression is interpreted as the probability that a job opening in sector s is left vacant. Under the assignment model, this expectation is

$$\bar{g}_7^{(s)} = E_{j|s_j=s} (e^{-Q_{1j}}), \quad (26)$$

which is the theoretical probability that an open position does not attract any applications in equilibrium. Since this probability is the same for all employers of the same type, n , we can rewrite (26) as

$$E_{j|s_j=s} (e^{-Q_{1,(n,j)}}) = \frac{\sum_{n=1}^N \nu_n^{(s)} e^{-Q_{1,n}^{(s)}}}{\sum_{n=1}^N \nu_n^{(s)}}.$$

We can express the numerator as the difference between openings and filled openings:

$$E_{j|s_j=s} \left(e^{-Q_{1,(n,j)}} \right) = \frac{\sum_{n=1}^N \nu_n^{(s)} - \left(1 - e^{-Q_{1,n}^{(s)}} \right) \nu_n^{(s)}}{\sum_{n=1}^N \nu_n^{(s)}}. \quad (27)$$

Because $\left(1 - e^{-Q_{1,n}^{(s)}} \right) = \sum_{m=1}^M e^{-Q_{m+1,n}^{(s)}} (1 - e^{-q_{m,n}})$, equation (27) simplifies to

$$\gamma_7^{(s)}(\mu, \nu, x) = E(\bar{g}_7^{(s)}) = \frac{\sum_{n=1}^N \nu_n^{(s)} - \sum_{m=1}^M \sum_{n=1}^N \lambda_{m,n}^{(s)}}{\sum_{n=1}^N \nu_n^{(s)}}. \quad (28)$$

The structural vacancy rate is equal to the difference between total openings and employment in sector s as a share of total openings.

E For Online Publication Only – Estimating Equations

Let $H^{(s)}$ be an $MN \times 1$ vector that selects jobs indexed by $n \in \{1, \dots, N\}$ that are in sector s , and let u_{MN} be the $MN \times 1$ unit vector. The expected value of $\hat{\theta}^*$ across matches in sector k , given the model primitives, is

$$E \left(\bar{g}_1^{(s)} \right) \equiv \gamma_1^{(s)}(\hat{\theta}^*, \hat{\psi}^*, \lambda^*) = \frac{\sum_{m=1}^M \sum_{n:s(n)=s} \lambda_{m,n}^* \hat{\theta}_m^*}{\sum_{m=1}^M \sum_{n:s(n)=s} \lambda_{m,n}^*}. \quad (29)$$

Equation (29) is the match-weighted sum of $\hat{\theta}^*$ on matches in sector s normalized by the total measure of such matches. This is more compactly expressed using matrix notation as

$$\gamma_1^{(s)} \left(\hat{\theta}^*, \hat{\psi}^*, \lambda^*, x^* \right) = \frac{H^{(s)T} \Lambda^* D \hat{\theta}^*}{H^{(s)T} \Lambda^* u_{MN}}. \quad (30)$$

Analogously, the expected value of $\hat{\psi}^*$ is

$$E \left(\bar{g}_2^{(s)} \right) \equiv \gamma_2^{(s)} \left(\hat{\theta}^*, \hat{\psi}^*, \lambda^*, x^* \right) = \frac{H^{(s)T} \Lambda^* F \hat{\psi}^*}{H^{(s)T} \Lambda u_{MN}}. \quad (31)$$

The expected variance of $\hat{\theta}^*$ is

$$E\left(\bar{g}_3^{(s)}\right) \equiv \gamma_3^{(s)}(\hat{\theta}^*, \hat{\psi}^*, \lambda^*) = \frac{H^{(s)T} \Lambda^* D \left(\hat{\theta}^*\right)^2}{H^{(s)T} \Lambda^* u_{MN}} - \left[\gamma_1^{(s)}\left(\hat{\theta}^*, \hat{\psi}^*, \lambda^*, x^*\right)\right]^2, \quad (32)$$

where $\left(\hat{\theta}^*\right)^2$ is the element-wise square of $\hat{\theta}^*$. The definition of $E\left(\bar{g}_4^{(s)}\right)$, the expected variance of $\hat{\psi}^*$ in sector s is exactly analogous. The expected covariance between $\hat{\theta}^*$ and $\hat{\psi}^*$ across matches in sector s is

$$E\left(\bar{g}_5^{(s)}\right) \equiv \gamma_5^{(s)}(\hat{\theta}^*, \hat{\psi}^*, \lambda^*, x^*) = \frac{H^{(s)T} \Lambda \left(D \hat{\theta}^* \odot F \hat{\psi}^*\right)}{H^{(s)T} \Lambda^* u_{MN}} - \left[\gamma_1^{(s)}\left(\hat{\theta}^*, \hat{\psi}^*, \lambda^*, x^*\right)\right] \left[\gamma_2^{(s)}\left(\hat{\theta}^*, \hat{\psi}^*, \lambda^*, x^*\right)\right], \quad (33)$$

where \odot indicates the element-wise product. The expected share of matches in sector s is

$$E\left(\bar{g}_6^{(s)}\right) \equiv \gamma_6^{(s)}\left(\hat{\theta}^*, \hat{\psi}^*, \lambda^*, x^*\right) = \frac{H^{(s)T} \Lambda^* u_{MN}}{u_{MN}^T \Lambda^* u_{MN}}, \quad (34)$$

where the numerator sums matches in sector s and the denominator computes the total measure of realized matches.

JOLTS reports the sectoral vacancy rate as the number of vacant openings divided by the sum of vacant openings and sectoral employment (equation 12). The model primitive $\nu^{(s)}$ is the theoretical analogue to the total number of openings. In the model, the measure of vacant openings is the difference between total openings and filled openings. Hence, the expected vacancy rate in sector s is

$$E\left(\bar{g}_7^{(s)}\right) \equiv \gamma_7^{(s)}\left(\hat{\theta}^*, \hat{\psi}^*, \lambda^*, x^*\right) = \varsigma \left(\frac{\nu^{(s)} - H^{(s)T} \Lambda^* u_{MN}}{\nu^{(s)}}\right), \quad (35)$$

where ς rescales the theoretical moments as discussed in Section 5.

Finally, expected output per worker in sector s is

$$E\left(\bar{g}_8^{(s)}\right) \equiv \gamma_8^{(s)}\left(\hat{\theta}^*, \hat{\psi}^*, \lambda^*, x^*\right) = \frac{H^{(s)T} \Lambda^* x}{H^{(s)T} \Lambda^* u_{MN}}, \quad (36)$$

where x^* is the $MN \times 1$ vector of production parameters arranged to be conformable with λ^* .